

Table 1 : The National Statistics Socio-Economic Classification (NS-SEC) system

NS-SEC group	Occupational categories
1	Higher managerial and professional occupations
2	Lower managerial and professional occupations
3	Intermediate occupations
4	Small employers and own account workers
5	Lower supervisory and technical occupations
6	Semi-routine occupations
7	Routine occupations
8	Never worked and long-term unemployed

Table 2: FYPSEC statistics for 2002 to 2008 entry cohorts

	Lower socio-economic groups	Higher socio-economic groups	Difference – ‘social class gap’
2002	10.5%	28.4%	17.9%
2003	11.1%	26.0%	14.9%
2004	11.2%	27.0%	15.8%
2005	12.7%	28.3%	15.6%
2006	12.3%	26.9%	14.6%
2007	12.9%	26.7%	13.8%
2008	13.7%	27.8%	14.1%

Source: DBIS (2010)

Table 3: Participation rate for POLAR=1 areas

Year	Rate	Year	Rate	Year	Rate
1995	13.6%	2000	13.5%	2005	15.1%
1996	13.7%	2001	14.1%	2006	15.7%
1997	13.3%	2002	14.0%	2007	16.8%
1998	13.0%	2003	14.0%	2008	18.0%
1999	13.3%	2004	14.5%	2009 (est)	19.2%

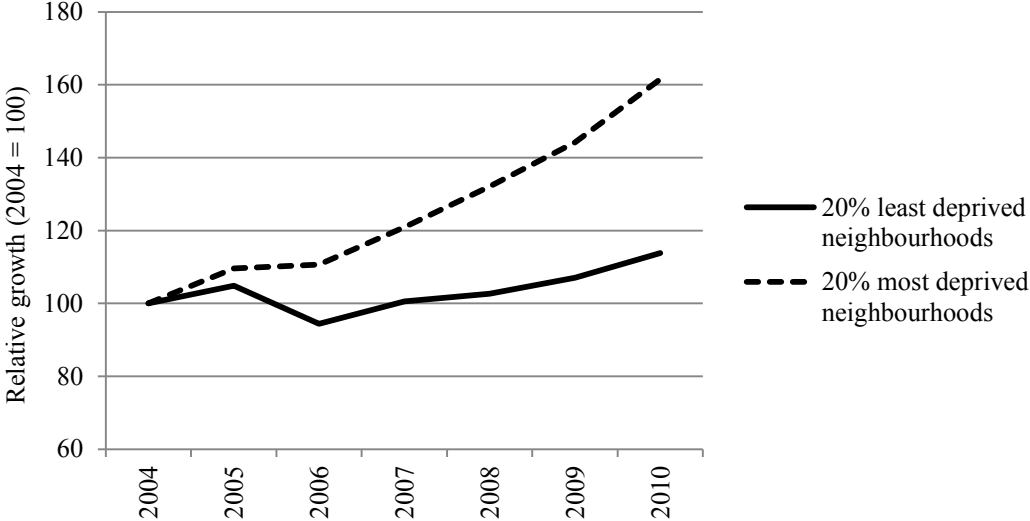
Source : HEFCE (2011)

Table 4: application rates for 18 year old cohorts between 2004 and 2009 in the 20% most and least deprived neighbourhoods

	20% most deprived neighbourhoods	20% least deprived neighbourhoods
2004	19.6%	54.5%
2005	21.5%	57.1%
2006	21.8%	51.4%
2007	23.8%	54.7%
2008	26.0%	55.9%
2009	28.3%	58.3%
2010	31.7%	62.0%

Source: Derived from UCAS (2011) and ONS (2011)

Figure 1 : relative growth in applications for 18 year old cohorts between 2004 and 2009 in the 20 percent most and least deprived neighbourhoods



Source: Derived from UCAS (2011)