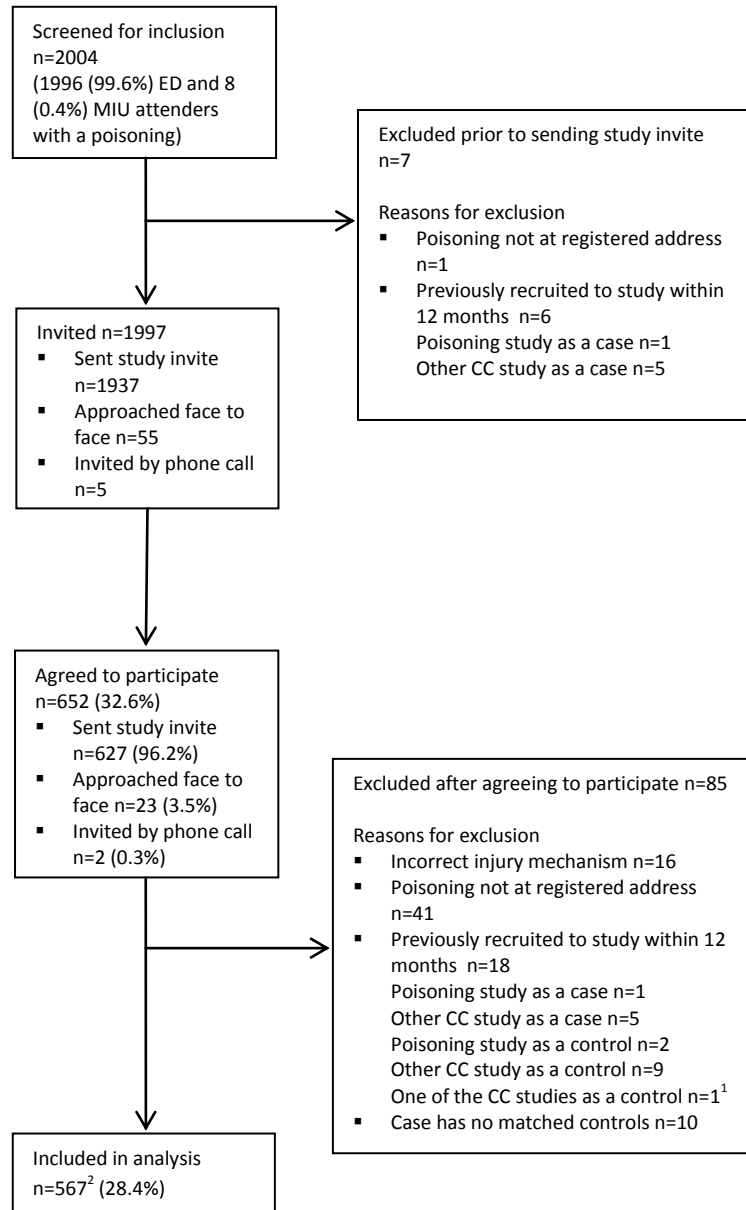


a) Recruitment of cases

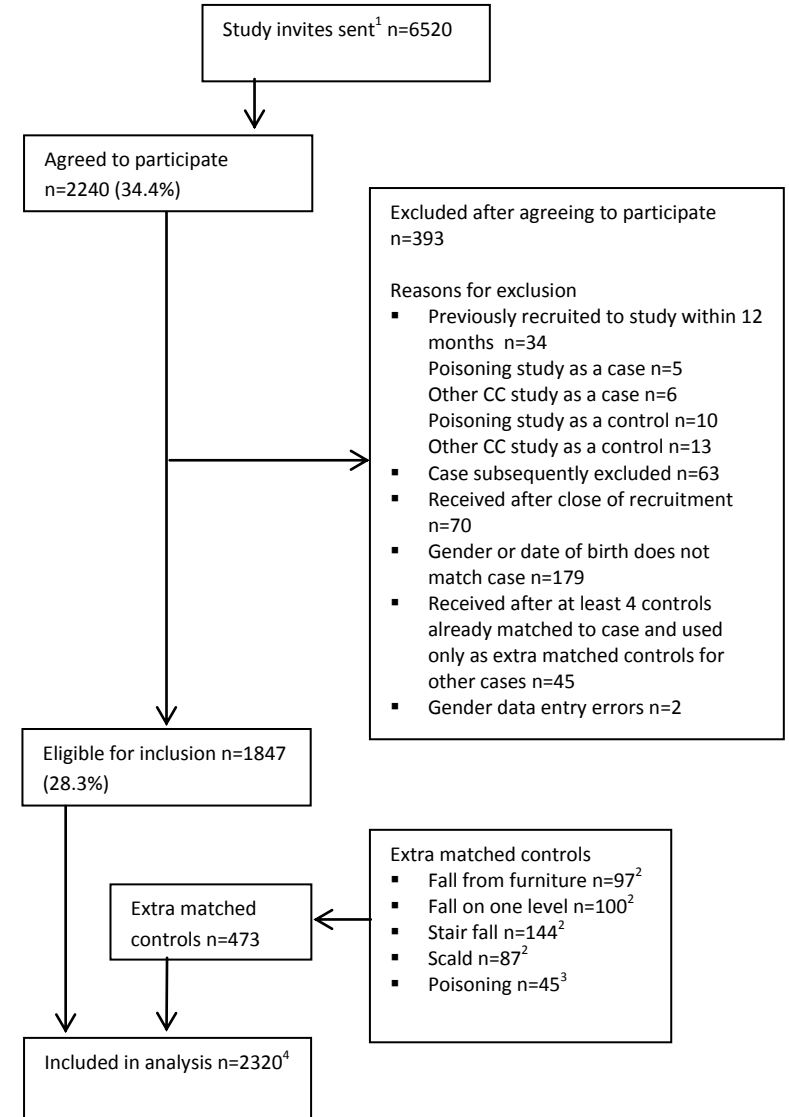


ED = emergency department, MIU = minor injury unit, CC = case-control study

¹The study the participant had previously been recruited to was not recorded

²Includes 8 participants previously recruited to one of the other on-going CC studies as a case and 5 previously recruited to this study as a control more than 12 months previously

b) Recruitment of controls



¹ Assumed to be 10x number of cases as practices were asked to invite 10 controls for each case

² Community controls for cases from the other four ongoing case control studies

³ Controls for cases from poisoning study that had more than four controls

⁴ Includes 9 participants previously recruited to one of the other on-going CC studies as a control and 1 participant previously recruited to this study as a control more than 12 months previously