



**UWE
Bristol**

University
of the
West of
England

Innovate UK

NERC

SCIENCE OF THE
ENVIRONMENT

Gemma Jerome

Danielle Sinnett ¹
Mortlock, Roger ²
Calvert, Tom ¹
Burgess, Sarah
Smith, Nick ¹

¹

- 1 Centre for Sustainable Planning and Environments, UWE Bristol
- 2 Gloucestershire Wildlife Trust

6-7 September 2016

Planning Research Conference 2016

Setting the standard for green infrastructure



Promoting the form, role and benefits of GI and ecosystem services at a range of spatial scales





Securing implementation is key





Contrasting development opportunities



Urban planning and GI policy context



National Planning Policy Framework

Your district Your future

Stroud District Local Plan
November 2015

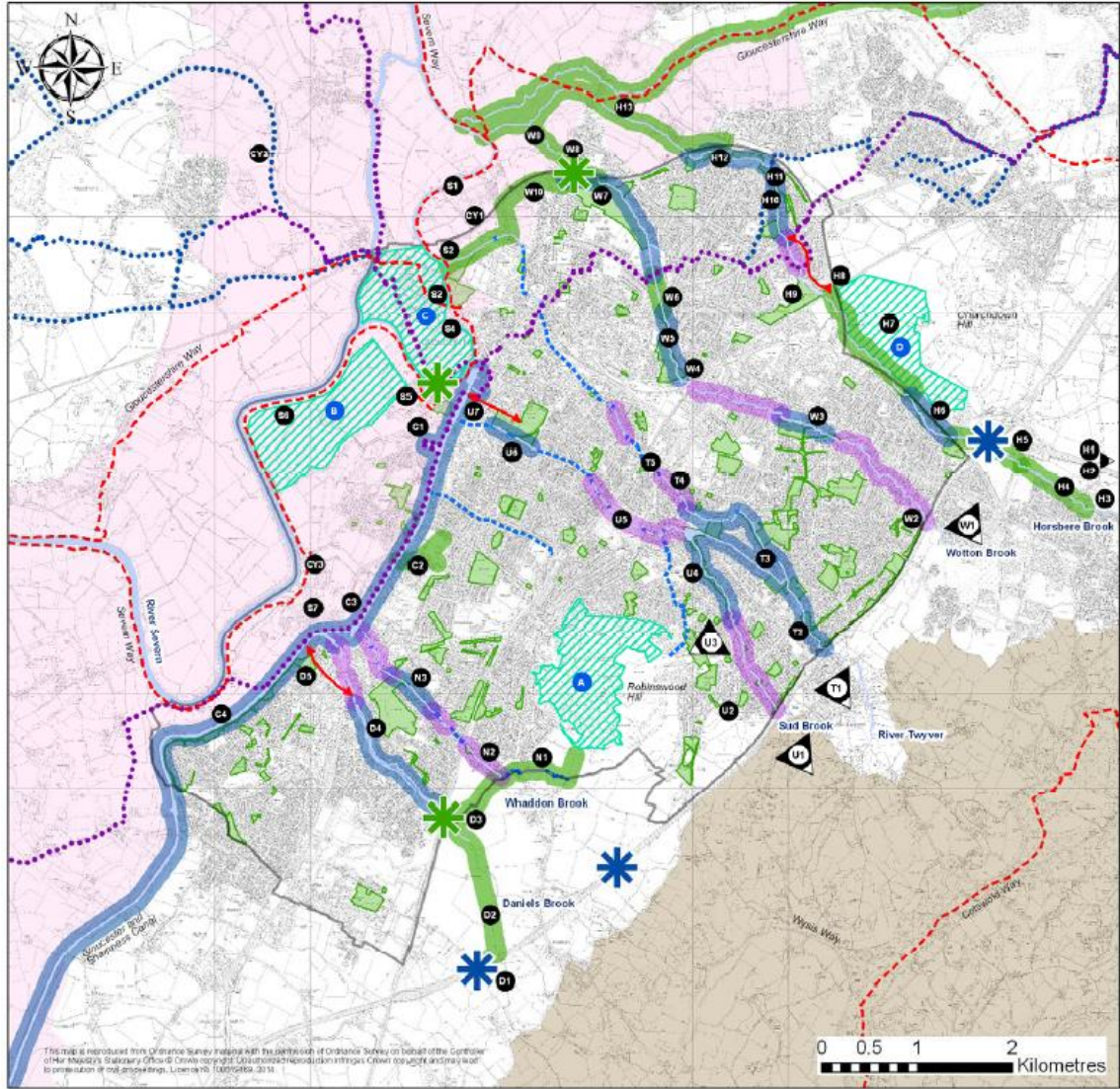


STROUD DISTRICT COUNCIL
www.stroud.gov.uk

West of England Strategic Green Infrastructure Framework



Setting GI priorities



City of Gloucester Green Infrastructure

- City Boundary
- Watercourses
- Public Open Space
- Area of Outstanding Natural Beauty
- Strategic Green Infrastructure Areas
 - Robinswood Hill
 - Hempsted Landfill Site
 - Alney Island
 - Horsbere Flood Relief Scheme
- Sub Regional Green Infrastructure Potential Regional Park
- Sustrans National Cycle Route
- Proposed Sustrans National Cycle Route
- Proposed Pedestrian Link
- Long Distance Footpath
- Existing Green Corridor - Enhanced
- Proposed Green Corridor
- Open Watercourse - Wildlife Corridor
- Culverted Watercourses
- Potential Pedestrian/Cycle Bridge
- Existing Bridge/Underpass Potential for Enhancement

Taking a partnership approach

Local Planning Authorities

- Tewkesbury Borough Council
- Stroud District Council
- Cheltenham Borough Council
- Cotswold District Council
- Gloucester City Council
- South Gloucestershire Council
- BANES Council

Development schemes (live planning applications)

- West of Stonehouse, Stroud (2000+ new homes; strategic allocation; outline plan approved; at detailed design stage and reserved matters)
- Chesterton, Cirencester (Cirencester urban extension; strategic allocation; outline plan submitted, awaiting determination)
- Former Filton Airfield, South Glos. (mixed use development; strategic allocation; pre-application)
- Elms Park, North West Cheltenham (4000+ new homes; strategic allocation; pre-application)
- Ecotricity 'Eco Park', Stroud (green technology park and sporting venue; not in plan i.e. speculative; outline submitted, awaiting determination)

Planning policy documents

- Tewkesbury Borough (Local) Plan – Green Infrastructure Strategy
- South Glos. Council – Green Infrastructure Strategy
- BANES – West of England Green Infrastructure Strategy



Development of a local GI benchmark

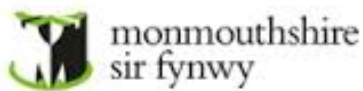
- Agreement to develop a local GI benchmark
- Project extension to explore the potential for a national GI benchmark
 - Desk study to review existing benchmarks in the sector
 - Expert symposia to test these findings with stakeholders and end-users





Gloucestershire

Review of existing standards and benchmarks



Stakeholders involved to date



Innovate UK



tcpa



Landscape Institute
Inspiring great places



Public Health
England



Forest Research



Scope

- Need / market
- Terminology
- Focus of criteria
- Spatial scale / project relevance
- Nature of users
- Fit with other benchmarks / standards

Operation

- Relationship with planning
- Assessment timing
- Cost
- Type of guidance
- Method of assessment
- Nature and expertise of the assessors
- Transparency of the process

Award

- Calculating performance
- Grading of award
- Marketing of the benchmark
- Monitoring and review

Beta-benchmark creation

Two levels

“Normalising a green infrastructure approach / raising the baseline”

Achieve – this is what good GI looks like

Excellent – this is what exemplary GI looks like

Mandatory Standards

to establish that a scheme has adopted a green infrastructure approach which is sustainable

Thematic standards

- Wildlife
- Water
- Wellbeing

Desk study

Different scoring methodologies tested

Option selected based on desk study and consultation with customers = ‘Strict’ Two levels

Findings from customer requirements testing (‘Frontrunner testing’)

Standards at correct level; parity; themes are helpful; ‘Pending’ award at Outline assists planning conditions/ s.106



Ensuring successful implementation

- Technical guidance to be published alongside
- Desk-study testing
- Internal 'operational' review
- External review
- Front runner testing



Thank you

For further information or to get involved:

Gemma.Jerome@uwe.ac.uk

Nicholas12.smith@uwe.ac.uk

Danielle.sinnett@uwe.ac.uk