

**UWE
Bristol**

University
of the
West of
England

Presentation by

**Dr Margarida
Sardo**

**Senior Research
Fellow in Science
Communication**

Evaluating large-scale participatory projects: what works?

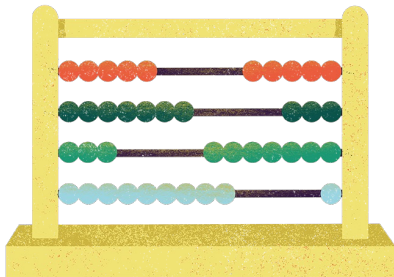
June 2024

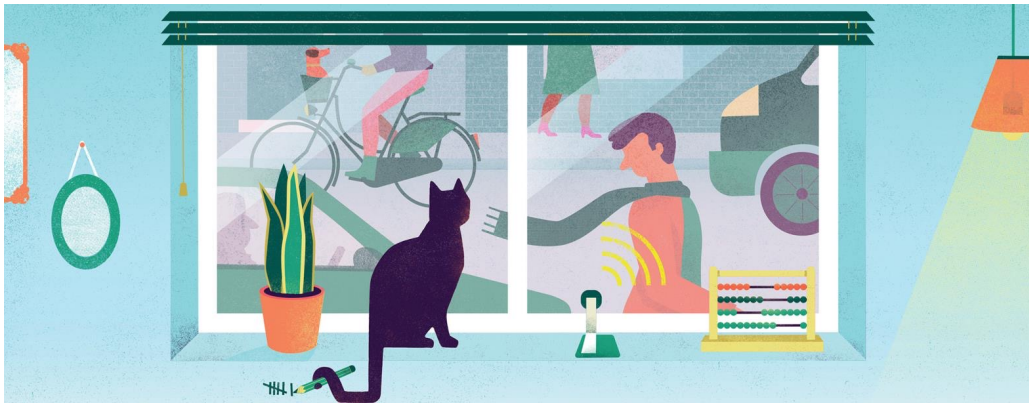
Large scale projects

Evaluating large-scale international research projects presents unique challenges such as a **long timeframe** or the need to **replicate methods** across diverse countries, languages, and cultures.

Participatory projects present unique challenges such as the **appropriation of concepts, ethical considerations, and adherence to social norms**.

Local communities often tailor general concepts to their socio-cultural and technical contexts, potentially **impacting generalisability**. The **different ethical rules** across countries introduce additional challenges. For example, what may be standard demographic questions in some nations can be deemed impolite in others.





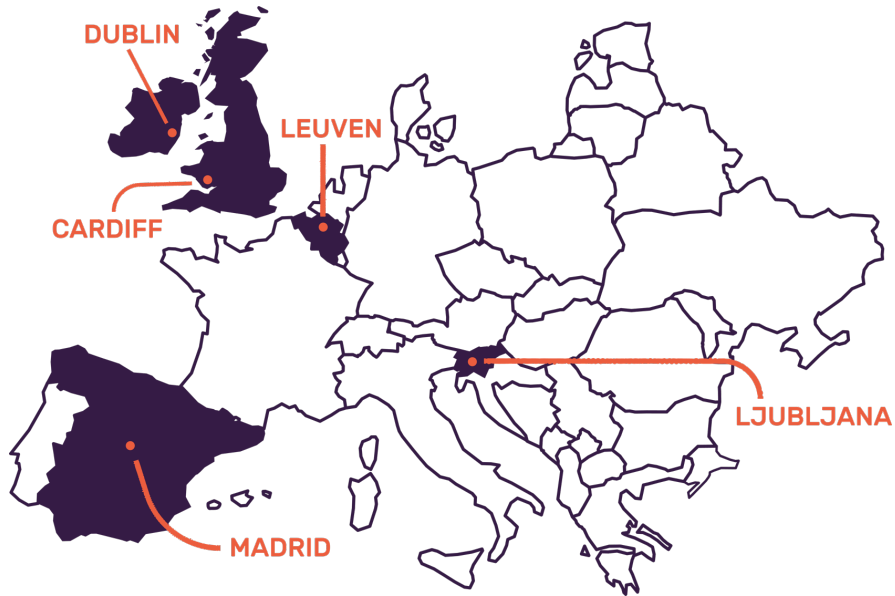
WeCount was a citizen science project, aimed to empower citizens to take a leading role in the production of data, evidence and knowledge around mobility in their own neighbourhoods, and at street level.



Citizens at the Centre

The **ClairCity** aim was to create a major shift in public understanding towards the causes of poor air quality, inviting citizens to give their opinions on air pollution and carbon reduction to shape the cities of the future.

Where?



Partners – Languages - Cultures

Evaluation Methods

- Online surveys (WeCount, ClairCity)
- Interviews (WeCount, ClairCity)
- Self-reflective logs (WeCount)
- Feedback during events and workshops (WeCount)
- Pop-up surveys (ClairCity)



Running large-scale evaluations

You might be leading the evaluation without actually carrying it out.

This can be **tricky**.



Key areas

- Evaluation framework
- Training
- Monitoring and Evaluation Mentor
- Data analysis



Evaluation Framework

- Embedding evaluation from the outset of a participatory project (biding stage) is crucial
- Will ensure there is budget, capacity and staff to undertake the evaluation
- A monitoring and evaluation framework provides a guideline on capturing key information about how progress and impact will be monitored and evaluated.



Training

- Ensure everyone on all the local project teams is aware of the evaluation needs and plans
- Evaluation team should facilitate evaluation training sessions (overview of the evaluation, methods used and expected tasks, including indications on how, when and where to collect data)
- Building on this general training, each local team may need Monitoring and Evaluation training session tailored to their individual needs



Monitoring and Evaluation Mentor

- Someone who provides continuous support to all partners.
- Mentor works closely with all local teams, organising regular meetings, answering questions, highlighting monitoring and evaluation needs and **sending reminders** of data that needed to be collected and/or stored.



Data analysis

- Set up online repositories that provide a user-friendly platform for local teams to easily upload their data.
- One effective way to enhance standardization of data collected is by offering templates for data collection, such as well-designed spreadsheets and tables.



Running large-scale evaluations



- Support and training
- Cultural differences
- Simple and clear
- Evaluation: guidance, templates and forms
- Data collection: spreadsheets, tables, etc.
- Storage: simple and easy
- Hold their hands: support and reminders

Top tips!



- Communication is key: clear and often
- Don't get lost in translation
- Get everyone familiar with your plans, forms, etc.
- **We are all humans. Be friendly and polite.**
- Teamwork makes the dream work!

Thank you.

Margarida.Sardo@uwe.ac.uk



WeCount has received funding from the European Union's Horizon 2020 research and innovation programme under grant agreement No. 872743.

ClairCity received funding for the European Union's Horizon 2020 research and innovation programme under grant No. 689289.

