



OPEN ACCESS

EDITED BY

Quan Lu,
Chinese Academy of Forestry, China

REVIEWED BY

Diana Marčiulyrienė,
Lithuanian Research Centre for Agriculture
and Forestry, Lithuania
Yong Li,
Chinese Academy of Forestry, China

*CORRESPONDENCE

Nargues Falahi Charkhabi
✉ falahicharkhabi@ut.ac.ir

[†]These authors have contributed equally to
this work

RECEIVED 22 October 2023

ACCEPTED 23 January 2024

PUBLISHED 21 February 2024

CITATION

Araeinejad M-H, Charkhabi NF, Brady C and
Rahimian H (2024) Reliable and specific
detection and identification of *Brenneria
goodwinii*, the causal agent of oak and
oriental beech decline.
Front. For. Glob. Change 7:1325897.
doi: 10.3389/ffgc.2024.1325897

COPYRIGHT

© 2024 Araeinejad, Charkhabi, Brady and
Rahimian. This is an open-access article
distributed under the terms of the [Creative
Commons Attribution License \(CC BY\)](#). The
use, distribution or reproduction in other
forums is permitted, provided the original
author(s) and the copyright owner(s) are
credited and that the original publication in
this journal is cited, in accordance with
accepted academic practice. No use,
distribution or reproduction is permitted
which does not comply with these terms.

Reliable and specific detection and identification of *Brenneria goodwinii*, the causal agent of oak and oriental beech decline

Mohammad-Hossein Araeinejad^{1†},
Nargues Falahi Charkhabi^{1*†}, Carrie Brady² and
Heshmat Rahimian³

¹Department of Entomology and Plant Pathology, College of Agricultural Technology, University
College of Agriculture and Natural Resources, University of Tehran, Tehran, Iran, ²Centre for Research
in Bioscience, Faculty of Health and Life Sciences, University of the West of England, Bristol, United
Kingdom, ³Department of Plant Protection, Sari Agricultural Science and Natural Resources University,
Sari, Iran

Chestnut-leaved oak (*Quercus castaneifolia*) and oriental beech (*Fagus orientalis*) are among the major tree species in the Hyrcanian forests. *Brenneria goodwinii* was identified as the causal agent of necrotic lesions and stem bleeding on affected oak trees in different countries. Oak and oriental beech trees with bleeding symptoms were observed in a few forest sites in northern Iran. The objectives of the present study were to identify and characterize the causal agents of bark canker in oak and oriental beech trees and develop a primer set for specific detection, using polymerase chain reaction (PCR), of *Brenneria goodwinii* strains. A total of 31 and 20 samples from oak and oriental beech trees, respectively, with stem bleeding and bark canker symptoms were collected from Golestan and Mazandaran forests in northern Iran in 2020–2021. Bacterial strains displaying a green metallic sheen on EMB-agar medium were isolated from symptomatic oak (105 strains) and oriental beech samples (32 strains), while 31 and 20 strains were also isolated from healthy oak and oriental beech, respectively. Pathogenicity tests indicated that 51 and 25 strains isolated from oak and oriental beech, respectively were able to induce a necrotic area on oak acorns 15 days following inoculation. Moreover, four and two representative strains inoculated on oak and oriental beech twigs, respectively induced necrosis on all inoculated green twigs 1 month after inoculation. The sequences of the 16S rRNA and *gyrB* genes of representative strains isolated from and proved pathogenic on oak and oriental beech trees were 100% and over 99% similar to *B. goodwinii* LMG 26270^T, respectively, which revealed the strains belong to *B. goodwinii* species. The primer pair BgF3/R2, which was designed to target the *hrpN* gene, was proven to be specific in the detection of *B. goodwinii* strains. The primer pair amplified a 618-bp DNA fragment from strains of *B. goodwinii* only and not from strains belonging to *Rahnella*, *Gibbsiella*, *Lonsdalea*, and the other *Brenneria* species among several other pathogenic bacteria tested. No fragment was amplified from DNA extracted from healthy trees or seedlings in PCR using this primer pair.

KEYWORDS

emerging diseases, forest decline, *Fagus orientalis*, *Quercus castaneifolia*, Iran

Introduction

Chestnut-leaved oak (*Quercus castaneifolia*) and oriental beech (*Fagus orientalis*) are among the main tree species in the Hyrcanian or Caspian forests in northern Iran, with a history that dates back to 25–50 million years (Alavi et al., 2020).

Forest decline, described as loss in tree vigor and increased mortality due initially to climate change events (e.g., climate warming and drought) and accompanied by the contribution of pathogens and pests (Manion, 1991), is becoming widespread in some local stands (Sangüesa-Barreda et al., 2015). Several bacterial species including *Gibbsiella quercinecans* (Brady et al., 2010), *Brenneria goodwinii* (Denman et al., 2012), *Brenneria roseae* (Brady et al., 2014a), *Rahnella victoriana* (Brady et al., 2014b), *Bacillus pumilus* and *Stenotrophomonas maltophilia* (Ahmadi et al., 2019), and “*Brenneria izadpanahii*” (Bakhshi Ganje et al., 2021) have been identified as the causal agents of necrotic lesions and stem bleeding on oak trees with decline symptoms. Although several bacterial species were found to be associated with acute oak decline (AOD) (Denman et al., 2012), the most frequently encountered pathogens are *G. quercinecans* (Brady et al., 2010) and *B. goodwinii* (Denman et al., 2012). The latter is supposed to be the most damaging among AOD agents (Doonan et al., 2019). *B. goodwinii* was isolated from different *Quercus* species in the United Kingdom (UK) (Denman et al., 2012), Latvia (Zalkalns and Celma, 2021), Spain (González and Ciordia, 2020), Iran (Bakhshi Ganje et al., 2020), Switzerland (Ruffner et al., 2020), and Poland (Tkaczyk et al., 2021). Additionally, it was associated with acute decline symptoms on hornbeam (*Carpinus betulus*) trees in Iran (Moradi-Amirabad et al., 2019).

Diagnostic approaches commonly employed for the identification of *B. goodwinii* species consist of traditional (phenotypic biochemical and nutritional) and pathogenicity tests and sequencing of housekeeping genes including *gyrB*, *infB*, *rpoB*, and *atpD* (Denman et al., 2012; Bakhshi Ganje et al., 2020), which are both time- and labor-consuming procedures. Recently, a multiplex TaqMan polymerase chain reaction (PCR) assay was developed for simultaneous detection of four bacterial species involved in the AOD syndrome in the UK, including *B. goodwinii*, *G. quercinecans*, *R. victoriana*, and *Lonsdalea britannica* (Crampton et al., 2020). Nonetheless, a reliable molecular method for the rapid, accurate, and culture-independent detection and identification of *B. goodwinii* strains in infected plant samples is still lacking.

Stem bleeding and bark canker of oak and oriental beech trees, similar to those reported in bacterial canker, were observed in the Hyrcanian or Caspian forests in northern Iran during the summer months of 2020–2021 in the forests of Golestan and Mazandaran provinces. The objectives of the present study were to identify and characterize the causal agents of bark canker in oak and oriental beech trees by bacterial isolation and prove pathogenicity on oak and oriental beech seedlings and oak acorns, phenotypic characterization, and phylogenetic analyses based on 16S rRNA and *gyrB* genes. As no species-specific primers have thus far been designed for the detection of *B. goodwinii* strains, attempts were made to devise and prove the reliability of a primer set for specific detection, using PCR, of *B. goodwinii* strains from different hosts.

Materials and methods

Sampling and isolation

Samples of the outer bark, inner bark, and sapwood tissues from cankered sites on the trunk and main branches of oak (*Q. castaneifolia*) and oriental beech (*F. orientalis*) trees were collected from Gorgan, Golestan province and Sari, Mazandaran province, respectively, in the summer of 2020–2021. Five symptomless samples were collected from the healthy trees of each host. Moreover, three samples were collected from two- and three-year-old healthy oak seedlings in the greenhouse. Tissues were washed under tap water for 5 min, then surface sterilized in 70% ethanol for 30 s and rinsed three times in sterile distilled water (SDW). The symptomatic tissues were ground to small pieces in SDW using a mortar and pestle and a loopful of resulting suspensions streaked on plates of EMB medium (Merck, Darmstadt, Germany) containing 1% glycerol and 0.5% yeast extract and incubated at 28°C. Bacterial colonies were isolated after 48–72 h and purified by streaking on nutrient agar (NA) (Merck, Germany, Darmstadt) plates. The strains were stored in 15% glycerol stocks at –80°C. Bacterial strains included in this study are listed in Table 1.

Pathogenicity assay

Pathogenicity testing of all strains, including 105 and 32 strains isolated from oak and oriental beech symptomatic trees, was performed on chestnut-leaved oak acorns by injecting 10 µL of a bacterial suspension of each isolate prepared from an overnight culture on NA in SDW with an optical density of 0.1 at 600 nm using a disposable insulin syringe with needle (González and Ciordia, 2020). *B. goodwinii* FRB 141^T, *G. quercinecans* LMG 25500^T, and *R. victoriana* FRB 225^T were used as positive controls and SDW as the negative control, respectively. Symptom progression was observed for 15 days. Pathogenicity assays were performed in two replicates each containing three acorns per strain.

Moreover, pathogenicity of representative strains (UT-Bg 21, 44, 100, 115, 235, and 245) isolated from oak and oriental beech trees was tested by inoculating two- and three-year-old oak and oriental beech seedlings. Seedlings were kept in a greenhouse under conditions of 16 h light at 28°C and 8 h dark at 24°C with 75% relative humidity. The surface of the young green twigs was first disinfected using 95% ethanol for 1 min. The bacterial suspensions of the representative strains with OD₆₀₀ = 0.1 were prepared in SDW and injected into twigs using sterile syringes. Inoculated twigs were covered with parafilm, and symptoms were monitored 2 months post-inoculation. To fulfill Koch's postulates, bacterial re-isolation from inoculated acorns, and twigs were performed 15 and 30 days post-inoculation on EMB-agar, respectively. Representative strains were inoculated on twigs in three replicates. Re-isolated bacteria were identified by colony morphology on EMB-agar and PCR using specific primers.

Phenotypic characterization

Ten strains isolated from each host were subjected to the following diagnostic tests: Gram reaction using 3% KOH (Suslow et al., 1982), levan formation from sucrose, oxidase reaction, starch hydrolysis, and

TABLE 1 Bacterial strains used in this study.

Species	Strain	References/Origin
<i>Brenneria goodwinii</i>	FRB 141 ^T	Denman et al. (2012)
	FRB 186, BAC 30–03-01, BAC 56e-01	Brady, C., University of the West of England
	BS1	Moradi-Amirabad et al. (2019)
	UT-Bg 17, 21*, 27, 28, 29, 30, 31, 32, 33, 35, 38, 39, 44*, 46, 47, 48, 49, 50*, 97, 98, 99, 100*, 101, 103, 105, 107, 108, 109, 111, 112, 115*, 116, 117, 118, 119, 121, 123, 125, 127, 128, 129, 130, 136, 137, 138, 139, 140, 147, 148, 153, <u>201</u> [†] , <u>202</u> , <u>203</u> [*] , <u>205</u> , <u>207</u> , <u>210</u> , <u>211</u> , <u>213</u> , <u>217</u> , <u>220</u> , <u>221</u> , <u>222</u> , <u>227</u> , <u>228</u> , <u>232</u> , <u>233</u> , <u>235</u> [*] , <u>236</u> , <u>237</u> , <u>239</u> [*] , <u>241</u> , <u>242</u> , <u>245</u> , <u>249</u> , <u>250</u> .	This study
<i>Brenneria roseae</i> subsp. <i>roseae</i>	FRB 222 ^T	Brady et al. (2014a)
<i>Brenneria roseae</i> subsp. <i>americana</i>	FRB 223 ^T	Brady et al. (2014a)
<i>Brenneria nigrifluens</i>	DSM 30175 ^T	Wilson et al. (1957)
	M2	Falahi Charkhabi et al. (2010)
<i>Brenneria salicis</i>	DSM 30166 ^T	Day (1924)
<i>Brenneria alni</i>	DSM 11811 ^T	Surico et al. (1996)
<i>Brenneria rubrifaciens</i>	DSM 4483 ^T	Wilson et al. (1967)
<i>Brenneria tiliae</i>	TWs2 <i>Brenneria</i> 2ii	Kile et al. (2022)
<i>Rahnella aquatilis</i>	LMG 2794 ^T	Izard et al., 1979
<i>Rahnella perminowiae</i>	SL6 ^T	Brady et al. (2022)
<i>Rahnella bonaserana</i>	H11b ^T	Brady et al. (2022)
<i>Rahnella rivi</i>	FC061912-K ^T	Brady et al. (2022)
<i>Rahnella ecdela</i>	FRB 231 ^T	Brady et al. (2022)
<i>Rahnella victoriana</i>	FRB 225 ^T	Brady et al. (2014b)
<i>Rahnella variigena</i>	FOD 20.8	Brady et al. (2014b)
<i>Rahnella inusitata</i>	FOD 9.5a	Brady et al. (2014b)
<i>Rahnella bruchi</i>	FRB 226 ^T	Brady et al. (2014b)
<i>Rahnella woolbedingensis</i>	FRB 227 ^T	Brady et al. (2014b)
<i>Gibbsiella quercinecans</i>	FRB 97 ^T	Brady et al. (2010)
<i>Gibbsiella greigii</i>	FRB 224 ^T	Brady et al. (2014c)
<i>Gibbsiella dentisursi</i>	DSM 23818 ^T	Saito et al. (2012)
" <i>Gibbsiella acetica</i> "	C22	Hu (2012)
<i>Lonsdalea quercina</i>	LMG 2724 ^T	Brady et al. (2012)
<i>Lonsdalea britannica</i>	FRB 18 ^T	Brady et al. (2012)
<i>Lonsdalea iberica</i>	1915-14 ^T	Brady et al. (2012)

*Strains used in phylogenetic analyses.

[†]Underlined strains isolated from the oriental beam (*Fagus orientalis*).

several other phenotypic tests according to Schaad et al. (2001). Utilization of carbon sources was assayed using the basal medium of Ayers et al. (1919) supplemented with filter-sterilized carbohydrate sources at 0.25% final concentration. Cultures of *Brenneria nigrifluens* M2 (Falahi Charkhabi et al., 2010), *B. goodwinii* FRB 141^T, *G. quercinecans* LMG2 5500^T, and *R. victoriana* FRB 225^T were also used as reference strains in all tests.

Molecular characterization

Genomic DNA was extracted from overnight cultures on NA using the alkalic lysis procedure (Niemann et al., 1997). PCR was

performed in a final volume of 20 μ L containing 2x *Taq* DNA Polymerase Master Mix (Ampliqon A/S, Odense, Denmark), 10 pmol of each primer, and 2 μ L of template DNA. The reaction was performed in a thermocycler (Mastercycler[®], Eppendorf, Hamburg, Germany). PCR amplification of the 16S rRNA gene of the five strains (UT-Bg 21, 44, 100, 235, and 239) was performed using the primer pair 27F/1492R (Lane, 1991; Stackebrandt and Liesack, 1993; Table 2). The PCR program used consisted of an initial denaturation at 94°C for 4 min, followed by 30 cycles of denaturing at 94°C for 1 min, annealing at 59°C for 1 min, and extension at 72°C for 2.5 min. The final extension was performed at 72°C for 10 min.

A 1050 bp fragment of the housekeeping gene *gyrB* (DNA gyrase subunit β) of each of the eight strains including UT-Bg 21, 44, 50, 100,

TABLE 2 Name, sequence, target, product size, and reference of primers used in this study.

Name	Sequence (5'-3')	Gene target	Product size (bp)	References
27F	AGAGTTTGATCCTGGCTCAG	16S rDNA	1,500	Lane (1991)
1492R	TACGGCTACCTTGTACGACTT			Stackebrandt and Liesack (1993)
<i>gyrB</i> 01-F	TAARTTYGAYGAYAACYTAYAAAGT	<i>gyrB</i> -PCR	971	Brady et al. (2008)
<i>gyrB</i> 02-R	CMCCYTCCACCARGTAMAGTT			
<i>gyrB</i> 07-F	GTVCGTTTCTGGCCVAG	<i>gyrB</i> -Sequencing		
Bg-F1	GCTGAACGGGTATTTTCGCCTCA	<i>impG</i>	427	This study
Bg-R1	GAAAGGAACATATTCCTGCTCTTTTA			
Bg-F3	ATGCTTAAAGATGTTATCGGCAA	<i>hrpN</i>	618	This study
Bg-R2	CCAGCGTATTGCCGAGCTGAGA			

115, 203, 235, and 239 was amplified and sequenced using the primers and conditions previously published (Brady et al., 2008; Table 2).

The amplified fragments were electrophoresed in 0.5X TBE buffer (tris-borate) and visualized by staining with ethidium bromide. The conserved genes were sequenced by Microsynth Co. (Balgach, Switzerland) using the Sanger method, and the obtained sequences were compared with those deposited in GenBank. Alignments were performed in ClustalW (Thompson et al., 1994), and phylogenetic trees were constructed using MEGA X (Kumar et al., 2018) with the maximum likelihood method based on the lowest value of the Bayesian information criterion (BIC). The robustness of the branches was determined by bootstrap analysis using 1000 replicates. *Xenorhabdus nematophila* ATCC 19061^T (DSM 3370^T) was used as an outgroup.

Primer designing

The genome sequence of *B. goodwinii* FRB 141^T (GenBank accession no. NZ_CP014137.1) was aligned against genomes of the other *B. goodwinii* strains including *B. goodwinii* FRB 171 (NZ_MJLY0000000.1) and *B. goodwinii* OBR1 (CGIG01000001.1). Genes with more than 95% similarity were selected and aligned with those of '*Affinibrenneria salicis*' strain L3-3HA, *Brenneria corticis* CFCC 11842, '*B. izadpanahii*' Iran 50, *B. nigrifluens* ATCC 13028, *B. nigrifluens* LMG 2694^T, *Brenneria populi* EniD312, *B. roseae* subsp. *roseae* LMG 27714^T, *B. roseae* subsp. *americana* LMG 27715^T, *Brenneria rubrifaciens* 6D370, *Brenneria salicis* ATCC 15712^T, and *Brenneria* sp. hezel4-2-4. Potential genes with less than 85% similarity were screened, and candidate genes were aligned with those of *Brenneria* (taxid:71655), *Gibbsiella* (taxid:929812), *Rahnella* (taxid:34037), *Lonsdalea* (taxid:1082702), *Dickeya* (taxid:204037), *Pantoea* (taxid:53335), *Serratia* (taxid:613), *Pectobacterium* (taxid:122277), *Enterobacterales* (taxid:91347), *Xanthomonas* (taxid:338), and *Pseudomonas* (taxid:286), as well as NCBI BioProject PRJNA342025. Finally, the gene encoding protein IpmG of the type VI secretion system and the gene encoding HrpN of the type III secretion system in *B. goodwinii* strains FRB 141^T, FRB 171, and OBR1 were selected for designing the primers. Two primer pairs were designed and evaluated for PCR detection of *B. goodwinii*: BgF1/R1, which amplified a 427 bp fragment of *impG* gene and BgF3/R2 that amplified a 618 bp fragment of *hrpN* as the target (Table 2). Primers were synthesized by the Metabion Company (Bavaria, Germany).

Primer specificity

The two primer pairs BgF1/R1 and BgF3/R2 were evaluated for their specificity in targeting the specific genes in *B. goodwinii*. PCR was performed in 20 µL-reaction mixtures containing 2x *Taq* DNA Polymerase Master Mix (Ampliqon A/S, Odense, Denmark), 10 pmol of each primer, and 2 µL of template DNA. The PCR program consisted of an initial denaturation step of 5 min at 94°C, followed by 28 cycles of 1 min at 94°C, 1 min at 56°C, and 45 s at 72°C, and a final extension step of 5 min at 72°C. *B. goodwinii* FRB 141^T and *B. goodwinii* BS1 (Moradi-Amirabad et al., 2019) were used as positive controls. SDW and strains of the other species and representative species of *Brenneria*, *Rahnella*, *Gibbsiella*, and *Lonsdalea* inciting decline on other forest trees (Table 1), plus strains of some distantly related or unrelated genera, including *Enterobacter ludwigii* A21, *Serratia marcescens* A80, *Pectobacterium carotovorum* ATCC 15713^T, *Xanthomonas translucens* pv. *undulosa* ICMP11055, *X. translucens* pv. *cerealis* ICMP 5752, *Pantoea agglomerans* NK16, *Agrobacterium radiobacter* PK, *Pseudomonas viridiflava* ATCC 13223^T, *P. viridiflava* FBF52, *Pseudomonas* sp. A44, *Pseudomonas tolaasii* T7, and *Pseudomonas amygdali* pv. *lachrymans* GSPB 82a, A77: *Klebsiella oxytoca* A77, *Enterobacter ludwigii* A21, *Bacillus* sp. A11, and *Lysinibacillus* sp. A31, were all used as negative controls. Bacterial strains isolated from symptomless oak trees and seedlings were also used in the specificity assay.

In planta detection of *Brenneria Goodwinii*

For direct detection of *B. goodwinii* in infected tissues, oak symptomatic samples collected from Golestan and Mazandaran forests as well as oriental beech artificially inoculated plants were used. Inoculation was performed as described above. Three weeks after inoculation, 0.5 g of artificially infected oriental beech twig tissues was cut and homogenized with a mortar pestle in 4-ml SDW and incubated at room temperature for 1 h. Moreover, oak symptomatic samples were homogenized with a mortar pestle in phosphate-buffered saline buffer and incubated at room temperature for 1 h. DNA was extracted from the suspension using the alkalic lysis procedure (Niemann et al., 1997), 2 µL of which was used in the species-specific PCR as described above. Twigs injected with SDW were used as a negative control.

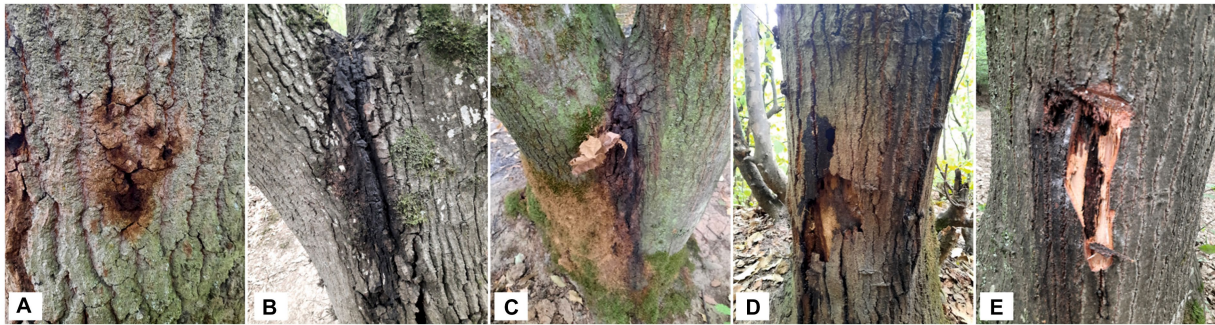


FIGURE 1

Symptoms of acute decline of chestnut-leaved oak (*Quercus castaneifolia*) in Iran, canker lesions, stem bleeding of a dark sticky fluid from vertical cracks (A–C), and necrotic underlying tissue lesions in the inner bark (D–E).

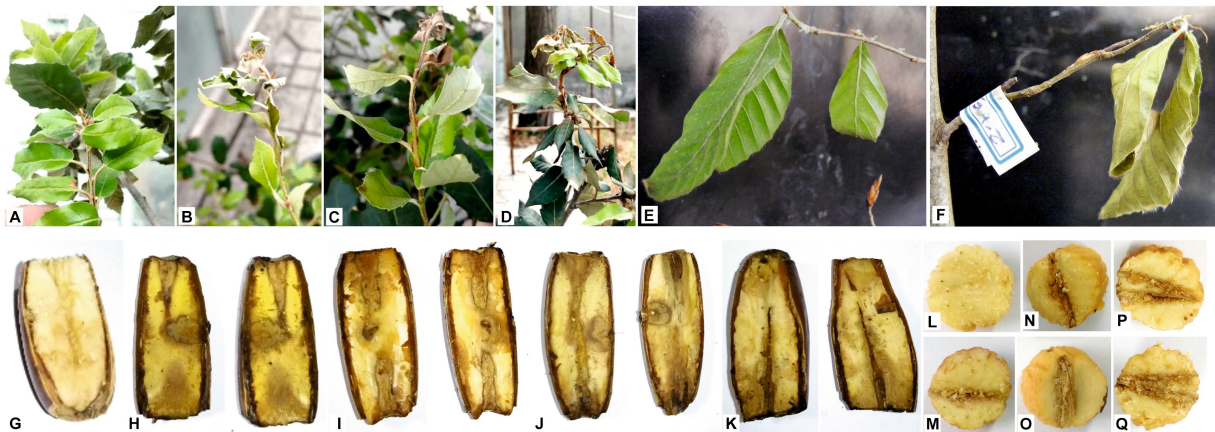


FIGURE 2

Pathogenicity assays of *Brenneria goodwinii* strains isolated from chestnut leaved oak (*Quercus castaneifolia*) and oriental beech (*Fagus orientalis*) on the oak and oriental beech seedlings and oak acorns, 30 and 15 days after inoculation, respectively. (A,E,G,L) Negative control infiltrated using sterile deionized water; oak seedlings inoculated using strains UT-Bg 21 (B), UT-Bg 100 (C), UT-Bg 115 (D); oriental beech seedling inoculated using strain UT-Bg 245 (F), acorn inoculated using strains UT-Bg 46 (H), UT-Bg 98 (I), UT-Bg 222 (J), UT-Bg 235 (K), UT-Bg 115 (M), UT-Bg 21 (N), UT-Bg 44 (O), UT-Bg 239 (P,Q).

Primer sensitivity

To determine the sensitivity and limit of detection of the designed primer pair, DNA was extracted from serial 10-fold dilutions of *B. goodwinii*, with suspensions starting with $OD_{600} = 0.1$, by the alkaline lysis procedure (Niemann et al., 1997), and 2 μ L was used as templates in the PCR tests as described above.

Results

Symptoms, sampling, and isolation

In the summer of 2020–2021, 31 samples and 20 samples from decline-affected oak and oriental beech trees were collected in different areas of the Golestan and Mazandaran forests, respectively. The most characteristic symptoms were tissue necrosis, canker, and bleeding of a dark sticky fluid from vertical cracks in the bark of the trunk and scaffold branches of the infected trees (Figure 1). A total of

105 and 32 strains with a green metallic sheen on EMB-agar medium were isolated from the symptomatic oak and oriental beech samples, respectively. Thirty-one strains were also isolated from symptomless oak and oriental beech trees. Additionally, 15 strains were isolated from two- and three-year-old oak seedlings in the greenhouse and used in some tests.

Pathogenicity tests

All strains were inoculated on oak acorns, among which 51 strains isolated from oak and 25 strains isolated from oriental beech were able to induce a necrotic area 15 days following inoculation (Figures 2H–K,M–Q). Furthermore, *B. goodwinii* FRB 141^T, *G. quercinecans* LMG 25500^T, and *R. victoriana* FRB 225^T also induced necrotic areas on oak acorns. Four representative strains induced necrosis on all inoculated oak green twigs, 1 month after inoculation under greenhouse conditions (Figures 2B–D). Moreover, two strains inoculated on oriental beech caused necrosis on green twigs and die-back (Figure 2F). Re-isolation from the inoculated six acorn

samples, four oak, and three oriental beech twigs was performed on EMB and yielded a profuse number of colonies with a green metallic sheen similar to the inoculated ones. Moreover, the identification of re-isolated strains was confirmed by PCR using the developed specific primers. No symptoms were observed on test acorns and twigs injected with SDW (Figures 2A,E,G,L).

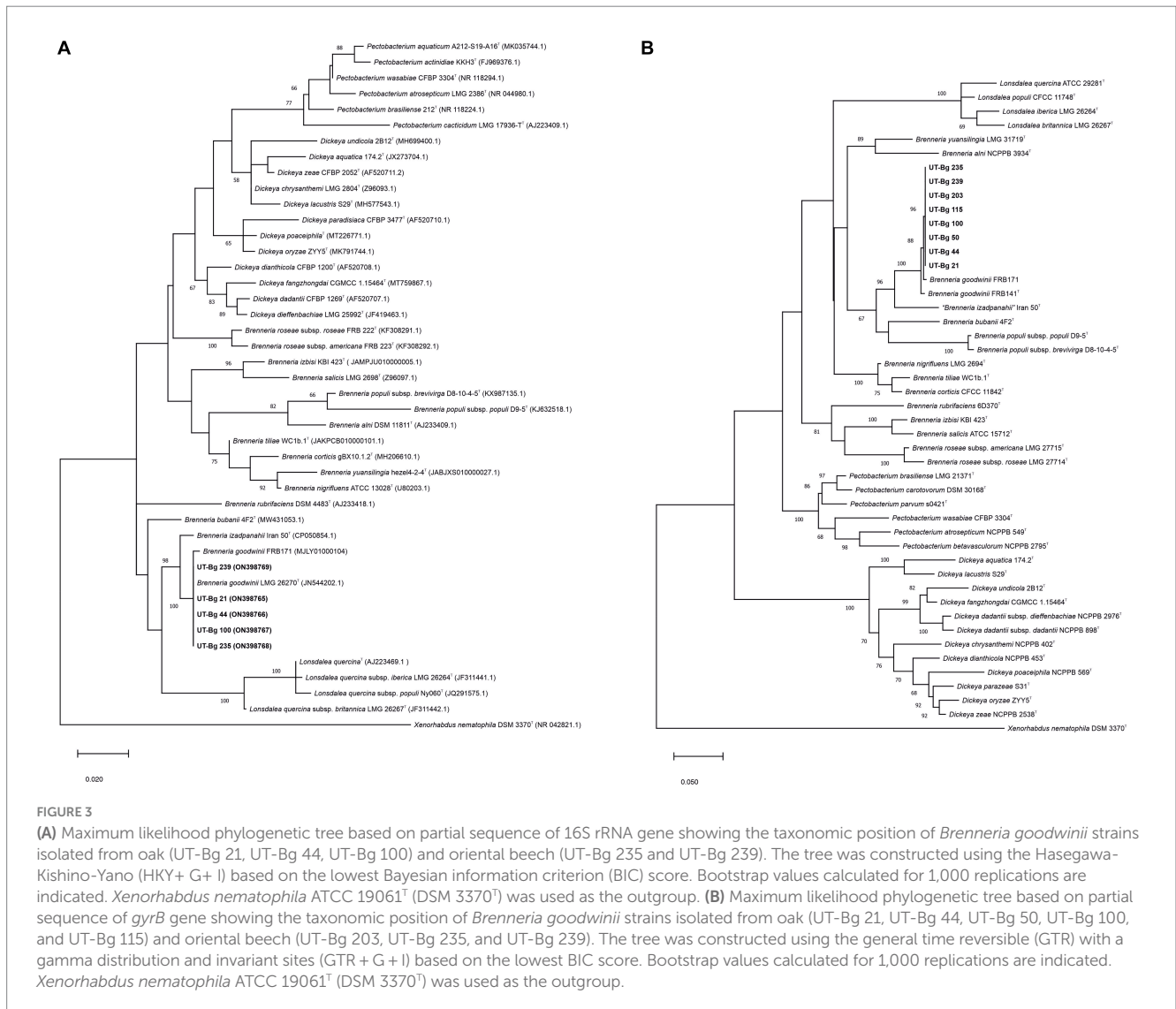
Phenotypic characteristics

Twenty strains isolated from the affected trees were Gram-negative. Colonies on nutrient agar were cream-colored, circular, convex, and smooth with entire margins and produced a green metallic sheen on EMB-Agar. Strains were negative in tests for oxidase, starch, Tween 20 hydrolysis, and the production of levan. Acid was produced from arabinose, fructose, D-lactose, trehalose, mannitol, and sorbitol. Strains utilized histidine, alanine, and serine but not arginine, lysine, ornithine, and tryptophan as sole carbon sources. The phenotypic characters of isolated strains were identical with *B. goodwinii* LMG 26270^T, which indicated the strains belong to *B. goodwinii* species.

Sequence analysis

Sequences of 976 bp and 718 bp fragments of the 16S rRNA and *gyrB* genes, respectively, of representative strains isolated from oak and oriental beech revealed similarity levels of 100% and over 99% to *B. goodwinii* LMG 26270^T, respectively, which revealed the strains belong to *B. goodwinii* species. The sequences were deposited in the NCBI GenBank database under accession numbers ON398765 to ON398769 for 16S rRNA (UT-Bg 21, 44, 100, 235, and 239), and ON412785 to ON412792 for *gyrB* (UT-Bg 21, 44, 50, 100, 115, 203, 235, and 239).

In the phylogenetic tree (Figure 3A) inferred from the 16S rRNA gene sequences of strains UT-Bg 21, 44, 100, 235, and 239, the strains clustered within the type strain of *B. goodwinii* supported with bootstrap values of 100%. In the phylogenetic tree constructed from the *gyrB* sequences of strains UT-Bg 21, 44, 50, 100, 115, 203, 235, and 239, all strains clustered with *B. goodwinii* LMG 26270^T and *B. goodwinii* FRB 171 with high bootstrap support (Figure 3B). Based on phenotypic characters and phylogenetic analysis, the strains belong to *B. goodwinii* species.



Primer specificity

The designed primer pair BgF1/R1 amplified a 427-bp fragment from *B. goodwinii* FRB 141^T and *B. goodwinii* BS1 strains. This primer pair amplified the desired fragment in two-thirds of *B. goodwinii* strains (data not shown). Contrarily, the primer pair BgF3/R2 amplified a 618 bp DNA fragment from 51 and 25 *B. goodwinii* strains isolated from affected oak and oriental beech, respectively, as well as FRB 141^T (Denman et al., 2012), BS1 (Moradi-Amirabad et al., 2019), and FRB 186, BAC 30–03-01, and BAC 56e-01. None of the bacterial strains belonging to the genera *Rahnella*, *Gibbsiella*, *Lonsdalea*, or other *Brenneria* species inciting decline on other forest trees, as well as strains representing a number of the other plant pathogenic bacteria, were amplified by these primer pairs (Figure 4). DNA samples and crude extracts of healthy trees or seedlings used did not yield any amplified product in PCR with these primer sets (Figure 5).

In planta detection of *Brenneria Goodwinii*

B. goodwinii was successfully re-isolated from artificially infected oriental beech inoculated with UT-Bg 235 and 239 strains. As expected, a specific amplicon of 618 bp was obtained from all seven artificially infected oriental beech twigs three weeks post-inoculation. Furthermore, the desired fragment was amplified in four oak

symptomatic samples. Twigs injected with SDW resulted in no symptoms and negative PCR reactions.

Primer sensitivity

The sensitivity threshold of BgF3/R2 primer pair in the detection of *B. goodwinii*, as estimated by a 10-fold dilution in SDW of cell cultures of the strain UT-Bg 100 from the initial suspension having OD₆₀₀ = 0.1 (containing 1 × 10¹¹ CFU/mL) on NA (Merck, Germany, Darmstadt), was approximately 1 × 10⁶ CFU/mL (data not shown).

Discussion

Decline is described as decreasing health and vigor of forest trees incited by abiotic and biotic agents (Helms, 1998). Forest tree declines characterized by trunk bark necrosis and bleeding of a dark sticky fluid from the vertical cracks developed on the trunks have been increasing in prevalence and severity in the Alborz and Zagros forests of oak, walnut, and alder in Iran (Ahmadi et al., 2019; Bakhshi Ganje et al., 2020; Moradi-Amirabad and Khodakaramian, 2020; Allahverdipour et al., 2021; Bakhshi Ganje et al., 2021). In the present study, we characterized strains of *B. goodwinii* associated with oak and oriental beech trees; the latter was identified for the first time as a new host species impacted by *B. goodwinii*.

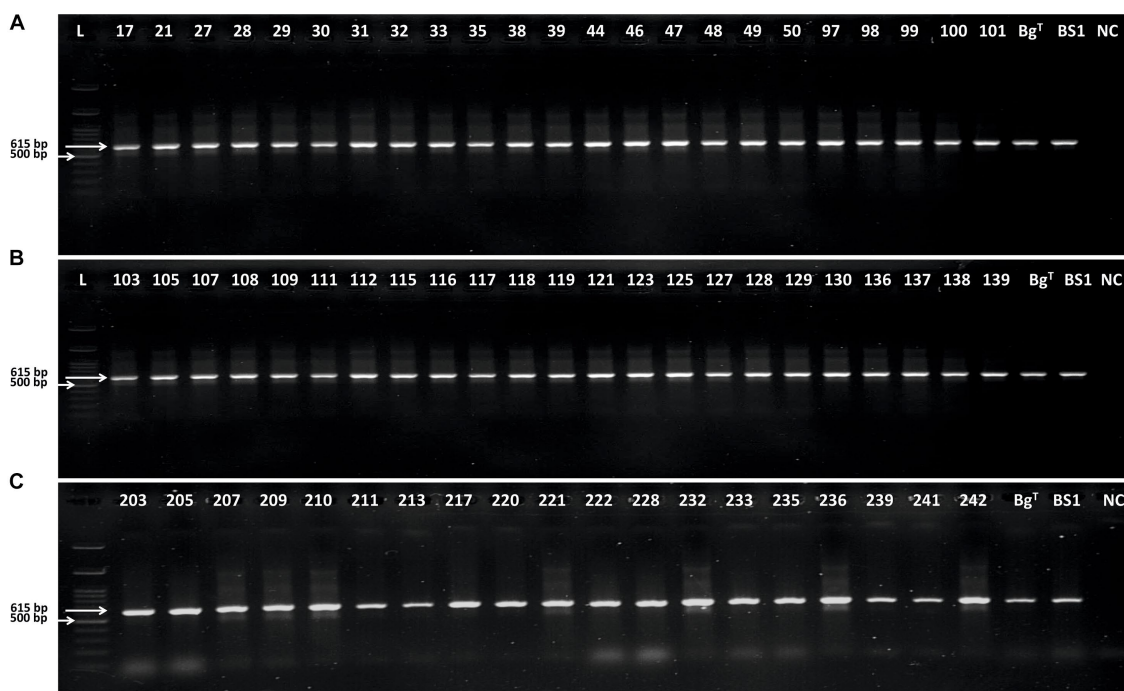


FIGURE 4 Gel electrophoresis analysis of polymerase chain reaction products amplified using BgF3/R2 primer pair. **(A)** L: 100 bp DNA Ladder Ready to Load (RT), Solis BioDyne, Tartu, Estonia; 17–101: *Brenneria goodwinii* strains UT-Bg 17 to UT-Bg 101 isolated from oak; Bg^T: *B. goodwinii* FRB 141^T; BS1: *B. goodwinii* BS1; and NC: negative control. **(B)**: 103–129: *B. goodwinii* strains UT-Bg103 to UT-Bg 129 isolated from oak; Bg^T: *B. goodwinii* FRB 141^T; BS1: *B. goodwinii* BS1; and NC: negative control. **(C)**: 203–242: *B. goodwinii* strains UT-Bg203 to UT-Bg 242 isolated from oriental beech; Bg^T: *B. goodwinii* FRB 141^T; BS1: *B. goodwinii* BS1; NC: negative control.

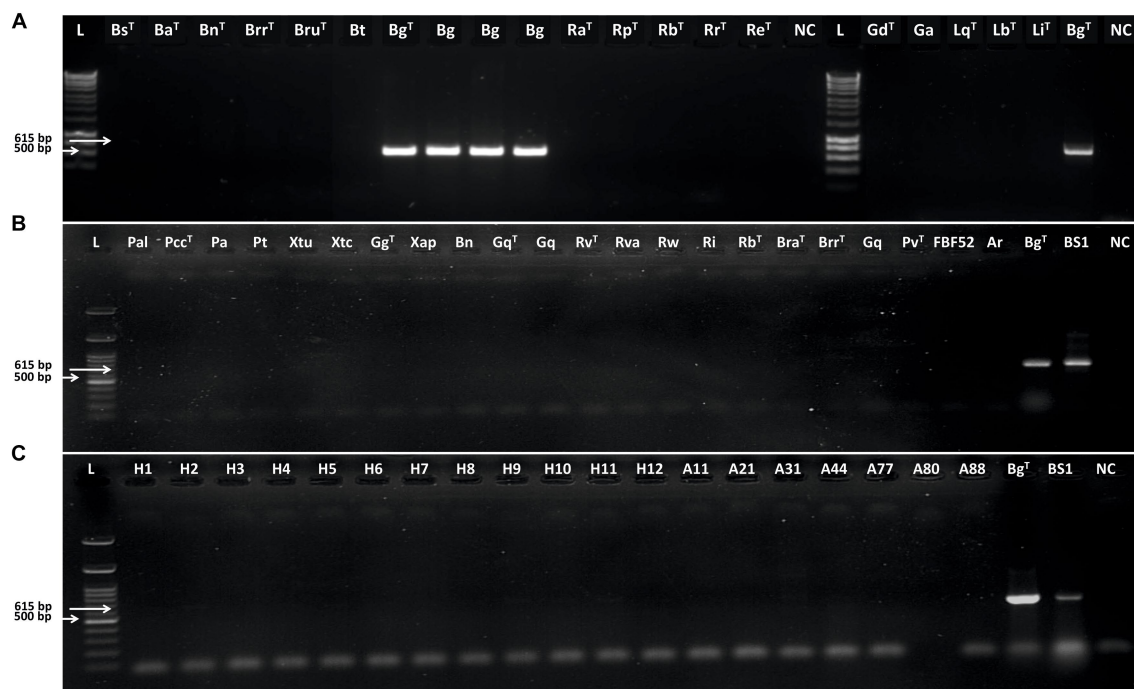


FIGURE 5

Gel electrophoresis analysis of polymerase chain reaction products amplified using BgF3/R2 primer pair. **(A)** L: Hyperladder 1 kb (Bioline); Bs^T: *Brenneria salicis* DSM 30166^T, Ba^T: *Brenneria alni* DSM 11811^T; Bn: *Brenneria nigrifluens* DSM 30175^T; Brr^T: *Brenneria roseae* ssp. *roseae* FRB 222^T; Br^T: *Brenneria rubrifaciens* DSM 4483^T; Bt: *Brenneria tiliae*; TWs2II: *Brenneria tiliae*; Bg^T: *Brenneria goodwinii* FRB 141^T; Bg1: *B. goodwinii* FRB 186; Bg2: *B. goodwinii* BAC 30–03–01; Bg3: *B. goodwinii* BAC 56e–01; Ra^T: *Rahnella aquatilis* LMG 2794^T; Rp^T: *Rahnella perminowiae* SL6^T; Rb^T: *Rahnella bonaserana* H11b^T; Rr^T: *Rahnella rivi* FC061912–K^T; Re^T: *Rahnella ecdela* FRB 231^T; NC: Negative Control; L: Hyperladder 1 kb (Bioline); Gd^T: *Gibbsiella dentisursi* DSM 23818^T; Ga: “*Gibbsiella acetica*” C22; Lq^T: *Lonsdalea quercina* LMG 2724^T; Lb^T: *Lonsdalea britannica* FRB 18^T; Li^T: *Lonsdalea iberica* 1915–14^T; Bg^T: *B. goodwinii* FRB 141^T; and NC: negative control. **(B)** L: 100 bp DNA Ladder Ready to Load (RT), Solis BioDyne, Tartu, Estonia; Pal: *Pseudomonas amygdali* pv. *lachrymans*; Pcc^T: *Pectobacterium carotovorum* ATCC 15713; Pa: *Pantoea agglomerans* NK16; Pt: *Pseudomonas tolaasii* T7; Xtu: *Xanthomonas translucens* pv. *undulosa* ICMP 11055; Xtc: *X. translucens* pv. *cerealis* ICMP 5752; Gg^T: Gg: *Gibbsiella greigii* FRB 224^T; Xap: *X. arboricola* pv. *pruni*; Bn: *Brenneria nigrifluens* M2; Gq^T: Gq^T: *Gibbsiella quercinecans* FRB 97^T; Gq: *G. quercinecans* I2; Rv^T: *Rahnella victoriana* FRB 225^T; Rva: *Rahnella variigena* FOD 20.8; Rw^T: *Rahnella woolbedingensis* FRB 227^T; Ri: *Rahnella inusitata* FOD 9.5a; Rb: *Rahnella bruchi* FRB 226^T; Bra^T: *Brenneria roseae* subsp. *americana* FRB 223^T; Brr^T: *Brenneria roseae* subsp. *roseae* FRB 222^T; Gq: *G. quercinecans* KE1; Pseudomonas *viridiflava* ATCC 13223^T; FBF52: *P. viridiflava* FBF52; Ar: *Agrobacterium radiobacter* PK, Bg^T: *B. goodwinii* FRB 141^T; BS1: *B. goodwinii* BS1; and NC: negative control. **(C)** L: 100 bp DNA Ladder Ready to Load (RT), Solis BioDyne, Tartu, Estonia; H1–H12: Strains isolated from healthy trees and seedlings; A11: *Bacillus* sp. A11; A21: *Enterobacter ludwigii* A21; A31: *Lysinibacillus* sp. A31; A44: *Pseudomonas putida* A44; A77: *Klebsiella* sp. A77; A80: *Serratia marcescens* A80; A88: *Stenotrophomonas maltophilia* A88; B. *goodwinii* FRB 141^T; BS1: *B. goodwinii* BS1; and NC: negative control.

Pathogenicity assay of isolated strains was performed on oak acorns according to González and Ciordia (2020), which was conducted for stains associated with forest tree decline symptoms. As the isolated pathogens and symptoms in oak and oriental beech trees were the same, pathogenicity assays of all strains were performed on oak acorns, and the results indicated that *B. goodwinii* strains, regardless of the host species, are pathogenic on oak acorns. Moreover, the pathogenicity of representative strains on the corresponding plant hosts showed that *B. goodwinii* strains cause necrosis and die-back on the host twigs.

In this study, bacterial colonies with a green metallic sheen on EMB-agar were consistently isolated from the oak and oriental beech trees displaying canker and stem bleeding symptoms in northern Iran. The strains were identified as *B. goodwinii* on the basis of their phenotypic characteristics, pathogenicity features, and sequences of 16S rRNA and *gyrB* genes. All strains plus the type strain and four other known strains of *B. goodwinii* were also detected by PCR, using

the newly developed primer pair BgF3/R2, which targets the *hrpN* gene of *B. goodwinii*.

The decline and bleeding stem canker of beech in Europe and the United States are mostly caused by *Phytophthora × cambivora* (Jung et al., 2005, 2017). The disease is characterized by dark-colored bleeding areas, which usually appear near the collar, and occasionally, bleeding may be observed on the trunk. In this study, *B. goodwinii* was identified as associated with brown spots, tissue necrosis, and canker on the trunk of oriental beech. To the best of our knowledge, this is the first bacterial disease of oriental beech.

B. goodwinii, as a key species involved in characteristic weeping symptoms and live bark degradation, has a type 3 secretion system (T3SS) and associated harpins and effectors that could manipulate the host. The other two prevalent bacterial species, *G. quercinecans* and *R. victoriana* (Brady et al., 2017; Denman et al., 2018), mainly with enzyme-degrading plant cell walls, enhance or facilitate necrosis (Doonan et al., 2019).

Although identification of *B. goodwinii* by sequencing housekeeping genes is a robust and reliable method, it is also laborious and time-consuming. Here, we indicated that PCR using specific primers is a valuable, efficient, and less labor-intensive method for direct and culture-independent detection of *B. goodwinii* in forest trees, as well as its rapid and precise identification in samples or cultures. The designed PCR requires only a commercial DNA Polymerase Master Mix that is not expensive. Therefore, this protocol is easy to use in different laboratories, including those located in low-income countries. Moreover, the target gene was detected in PCR with DNA extracted directly and culture-independently using the alkaline procedure that is rapid and cheap. Regarding the increase in tree diseases in Iran, the development of specific primers could facilitate rapid identification of the pathogen.

Pathogenicity/virulence genes like *pth*, *hrp*, and *vir* of several other phytopathogenic genera and species were the most commonly used targets for designing primers specific for detection and identification of the phytopathogenic bacteria at the species or subspecies level by PCR (López et al., 2003). For instance, for designing specific primers *pel* (pectate lyase) genes are used for detecting *Pectobacterium* and *Dickeya* species (Darrasse et al., 1994; Louws et al., 1999). Designing primers from conserved regions of pathogenicity gene clusters could avoid non-specific amplicon production from non-pathogenic species or other pathogens. In this study, we used the *hrpN* gene in detecting *B. goodwinii* strains in oak and oriental beech bark samples. *HrpN*, encoded by *hrpN*, induces the hypersensitive response (HR) in resistant hosts and non-host plants, implying that the *hrp* genes may also be involved in host specificity (Yang et al., 2002; Holeva et al., 2004). These results indicated that the *hrpN* primer pair has both a high degree of sensitivity and specificity in detecting *B. goodwinii* from the bacterial strains belonging to the genera *Rahnella*, *Gibbsiella*, *Lonsdalea*, or other *Brenneria* species inciting decline on other forest trees. Moreover, this primer pair was able to detect *B. goodwinii* from symptomatic tissues. Thus, *hrpN* was determined to be useful as an appropriate target for the specific detection of *B. goodwinii* directly from infected or diseased tissues.

Data availability statement

The datasets presented in this study can be found in online repositories. The names of the repository/repositories and accession number(s) can be found in the article/supplementary material.

References

- Ahmadi, E., Kowsari, M., Azadfar, D., and Salehi Jouzani, G. (2019). *Bacillus pumilus* and *Stenotrophomonas maltophilia* as two potentially causative agents involved in Persian oak decline in Zagros forests (Iran). *For. Pathol.* 49:12541. doi: 10.1111/efp.12541
- Alavi, S. J., Ahmadi, K., Dormann, C. F., Serra-Diaz, J., and Nouri, Z. (2020). Assessing the dominant height of oriental beech (*Fagus orientalis* L.) in relation to edaphic and physiographic variables in the Hyrcanian forests of Iran. *Biotechnol. Agron. Soc. Environ.* 24, 262–273.
- Allahverdipour, T., Shahryari, F., and Falahi Charkhabi, N. (2021). *Gibbsiella quercinecans* and *Brenneria roseae* subsp. *roseae* associated to the canker disease of walnut trees in northwestern Iran. *Eur. J. Plant Pathol.* 161, 783–797. doi: 10.1007/s10658-021-02359-9
- Ayers, S. H., Rupp, P., and Johnson, W. T. (1919). A study of the alkali-forming bacteria in milk. *U. S. Dep. Agric. Bull.* 782, 1–39. doi: 10.5962/bhl.title.108233
- Bakhshi Ganje, M., Mackay, J., Nicolaisen, M., and Shams-Bakhsh, M. (2021). Comparative genomics, pangenome and phylogenomic analyses of *Brenneria* spp., delineation of *Brenneria izadpanahii* sp. nov. *Phytopathology* 111, 78–95. doi: 10.1094/PHYTO-04-20-0129-FI
- Bakhshi Ganje, M., Shams-Bakhsh, M., Mackay, J., and Rahimian, H. (2020). Identification and characterization of bacterial strains associated with diseased oak trees in northern Iran. *For. Pathol.* 50:12571. doi: 10.1111/efp.12571
- Brady, C., Arnold, D., McDonald, J. E., and Denman, S. (2017). Taxonomy and identification of bacteria associated with acute oak decline. *World J. Microbiol. Biotechnol.* 33:1. doi: 10.1007/s11274-017-2296-4
- Brady, C., Asselin, J. A., Beer, S., Brurberg, M. B., Crampton, B., Venter, S., et al. (2022). Emended description of the genus *Rahnella*. *Int. J. Syst. Evol. Microbiol.* 72: p.005190. doi: 10.1099/ijsem.0.005190

Ethics statement

This research does not contain any studies with human participants or animals performed by any of the authors.

Author contributions

M-HA: Investigation, Validation, Writing – review & editing, Funding acquisition. NC: Validation, Writing – review & editing, Conceptualization, Formal analysis, Investigation, Methodology, Project administration, Software, Supervision, Visualization, Writing – original draft. CB: Methodology, Validation, Writing – review & editing. HR: Conceptualization, Methodology, Writing – review & editing.

Funding

The author(s) declare financial support was received for the research, authorship, and/or publication of this article. This study was funded by University of Tehran (Grant numbers: 148605).

Acknowledgments

The authors thank Mohammad-Ali Mirhabibi and Mohammad Ashrafi for their help in performing the experiments.

Conflict of interest

The authors declare that they have no conflict of interest and the authors declare that the research was conducted in the absence of any commercial or financial relationships that could be construed as a potential conflict of interest.

Publisher's note

All claims expressed in this article are solely those of the authors and do not necessarily represent those of their affiliated organizations, or those of the publisher, the editors and the reviewers. Any product that may be evaluated in this article, or claim that may be made by its manufacturer, is not guaranteed or endorsed by the publisher.

- Brady, C. L., Cleenwerck, I., Denman, S., Venter, S. N., Rodríguez-Palenzuela, P., Coutinho, T. A., et al. (2012). Proposal to reclassify *Brenneria quercina* (Hildebrand and Schroth 1967) Hauben et al. 1999 into a new genus, *Lonsdalea* gen. nov., as *Lonsdalea quercina* comb. nov., descriptions of *Lonsdalea quercina* subsp. *quercina* comb. nov., *Lonsdalea quercina* subsp. *iberica* subsp. nov. and *Lonsdalea quercina* subsp. *britannica* subsp. nov., emendation of the description of the genus *Brenneria*, reclassification of *Dickeya dieffenbachiae* as *Dickeya dadantii* subsp. *dieffenbachiae* comb. nov., and emendation of the comb. nov., and emendation of the description of *Dickeya dadantii*. *Int. J. Syst. Evol. Microbiol.* 62, 1592–1602. doi: 10.1099/ijs.0.035055-0
- Brady, C., Cleenwerck, I., Venter, S., Vancanneyt, M., Swings, J., and Coutinho, T. (2008). Phylogeny and identification of *Pantoea* species associated with plants, humans and the natural environment based on multilocus sequence analysis (MLSA). *Syst. Appl. Microbiol.* 31, 447–460. doi: 10.1016/j.syapm.2008.09.004
- Brady, C., Denman, S., Kirk, S., Venter, S., Rodríguez-Palenzuela, P., and Coutinho, T. (2010). Description of *Gibbsiella quercinecans* gen. Nov., sp. nov., associated with acute oak decline. *Syst. Appl. Microbiol.* 33, 444–450. doi: 10.1016/j.syapm.2010.08.006
- Brady, C., Hunter, G., Kirk, S., Arnold, D., and Denman, S. (2014a). Description of *Brenneria roseae* sp. nov. and two subspecies, *Brenneria roseae* subspecies *roseae* ssp. nov. and *Brenneria roseae* subspecies *Americana* ssp. nov. isolated from symptomatic oak. *Syst. Appl. Microbiol.* 37, 396–401. doi: 10.1016/j.syapm.2014.04.005
- Brady, C., Hunter, G., Kirk, S., Arnold, D., and Denman, S. (2014b). *Rahnella victoriana* sp. nov., *Rahnella bruchi* sp. nov., *Rahnella woolbedingensis* sp. nov., classification of *Rahnella* genomospecies 2 and 3 as *Rahnella variigena* sp. nov. and *Rahnella inusitata* sp. nov., respectively and emended description of the genus. *Rahnella*. *Syst. Appl. Microbiol.* 37, 545–552. doi: 10.1016/j.syapm.2014.09.001
- Brady, C., Hunter, G., Kirk, S., Arnold, D., and Denman, S. (2014c). *Gibbsiella greigii* sp. nov., a novel species associated with oak decline in the USA. *Syst. Appl. Microbiol.* 37, 417–422. doi: 10.1016/j.syapm.2014.07.002
- Crampton, B. G., Plummer, S. J., Kaczmarek, M., McDonald, J. E., and Denman, S. (2020). A multiplex real-time PCR assay enables simultaneous rapid detection and quantification of bacteria associated with acute oak decline. *Plant Pathol.* 69, 1301–1310. doi: 10.1111/ppa.13203
- Darrasse, A., Priou, S., Kotoujansky, A., and Bertheau, Y. (1994). PCR and restriction fragment length polymorphism of a *pel* gene as a tool to identify *Erwinia carotovora* in relation to potato diseases. *Appl. Environ. Microbiol.* 60, 1437–1443. doi: 10.1128/aem.60.5.1437-1443.1994
- Day, W. R. (1924). *Watermark disease of the cricket-bat willow*. Oxford Forestry Memoirs, 3, 1–30.
- Denman, S., Brady, C. L., Kirk, S., Cleenwerck, I., Venter, S. N., Coutinho, T. A., et al. (2012). *Brenneria goodwinii* sp. nov., associated with acute oak decline in the UK. *Int. J. Syst. Evol. Microbiol.* 62, 2451–2456. doi: 10.1099/ijs.0.037879-0
- Denman, S., Doonan, J., Ransom-Jones, E., Broberg, M., Plummer, S., Kirk, S., et al. (2018). Microbiome and infectivity studies reveal complex polyspecies tree disease in acute oak decline. *ISME J.* 12, 386–399. doi: 10.1038/ismej.2017.170
- Doonan, J., Denman, S., Pachebat, J. A., and McDonald, J. E. (2019). Genomic analysis of bacteria in the acute oak decline pathobiome. *Microb. Genom.* 5:e000240. doi: 10.1099/mgen.0.000240
- Falahi Charkhabi, N., Shams-bakhsh, M., and Rahimian, H. (2010). Genetic diversity among *Brenneria nigrifluens* strains in Iran. *Eur. J. Plant Pathol.* 128, 303–310. doi: 10.1007/s10658-010-9667-0
- González, A. J., and Ciordia, M. (2020). *Brenneria goodwinii* and *Gibbsiella quercinecans* isolated from weeping cankers on *Quercus robur* L. Spain. *Eur. J. Plant Pathol.* 156, 965–969. doi: 10.1007/s10658-019-01891-z
- Helms, J. A. (1998). *The dictionary of forestry*. Bethesda, MD: The Society of American Foresters. 210.
- Holeva, M. C., Bell, K. S., Hyman, L. J., Avrova, A. O., Whisson, S. C., Birch, P. R., et al. (2004). Use of a pooled transposon mutation grid to demonstrate roles in disease development for *Erwinia carotovora* subsp. *atroseptica* putative type III secreted effector (DspE/A) and helper (HrpN) proteins. *Mol. Plant Microbe Interact.* 17, 943–950. doi: 10.1094/MPMI.2004.17.9.943
- Hu, B. (2012). *Origin of strain: C22 Exudate of pear tree*. China.
- Izard, D., Gavini, F., Trinel, P. A., and Leclerc, H. (1979). *Rahnella aquatilis*, nouveau membre de la famille des Enterobacteriaceae. *Ann. Microbiol.* 130, 163–177.
- Jung, T., Hudler, G. W., Jensen-Tracy, S. L., Griffiths, H. M., Fleischmann, F., and Osswald, W. (2005). Involvement of *Phytophthora* species in the decline of European beech in Europe and the USA. *Mycologist* 19, 159–166. doi: 10.1017/S0269-915X(05)00405-2
- Jung, T., Jung, M. H., Cacciola, S. O., Cech, T., Bakonyi, J., Seress, D., et al. (2017). Multiple new cryptic pathogenic *Phytophthora* species from Fagaceae forests in Austria, Italy and Portugal. *IMA Fungus* 8, 219–244. doi: 10.5598/imaefungus.2017.08.02.02
- Kile, H., Arnold, D., Allainguillaume, J., Denman, S., and Brady, C. (2022). *Brenneria tiliae* sp. nov., isolated from symptomatic *Tiliax molitkei* and *Tiliax europaea* trees in the UK. *Int. J. Syst. Evol. Microbiol.* 72:5515. doi: 10.1099/ijssem.0.005515
- Kumar, S., Stecher, G., Li, M., Knyaz, C., and Tamura, K. (2018). MEGA X: molecular evolutionary genetics analysis across computing platforms. *Mol. Biol. Evol.* 35, 1547–1549. doi: 10.1093/molbev/msy096
- Lane, D. J. (1991). “16S/23S rRNA sequencing” in *Nucleic acid techniques in bacterial systematics*. ed. E. G. M. Stackebrandt (New York: John Wiley & Sons, Inc.), 115–176.
- López, M. M., Bertolini, E., Olmos, A., Caruso, P., Gorris, M. T., Llop, P., et al. (2003). Innovative tools for detection of plant pathogenic viruses and bacteria. *Int. Microbiol.* 6, 233–243. doi: 10.1007/s10123-003-0143-y
- Louws, F. J., Rademaker, J. L. K., and de Bruijn, F. J. (1999). The three ds of PCR-based genomic analysis of phyto-bacteria: diversity, detection, and diagnosis. *Annu. Rev. Phytopathol.* 37, 81–125. doi: 10.1146/annurev.phyto.37.1.81
- Manion, P. D. (1991). *Tree disease concepts (no. 634.963 M278 1991)*. Hoboken: Prentice Hall.
- Moradi-Amirabad, Y., and Khodakaramian, G. (2020). First report of bleeding canker caused by sp. on *Populus nigra* in Iran. *New Dis. Rep.* 41:37. doi: 10.5197/j.2044-0588.2020.041.037
- Moradi-Amirabad, Y., Rahimian, H., Babaeizad, V., and Denman, S. (2019). *Brenneria* spp. and *Rahnella victoriana* associated with acute oak decline symptoms on oak and hornbeam in Iran. *For. Pathol.* 49:12535. doi: 10.1111/efp.12535
- Niemann, S., Pühler, A., Tichy, H. V., Simon, R., and Selbitschka, W. (1997). Evaluation of the resolving power of three different DNA fingerprinting methods to discriminate among isolates of a natural *Rhizobium meliloti* population. *J. Appl. Microbiol.* 82, 477–484. doi: 10.1046/j.1365-2672.1997.00141.x
- Ruffner, B., Schneider, S., Meyer, J., Queloz, V., and Rigling, D. (2020). First report of acute oak decline disease of native and non-native oaks in Switzerland. *New Dis. Rep.* 41, 18–5197. doi: 10.5197/j.2044-0588.2020.041.018
- Saito, M., Shinozaki-Kuwahara, N., and Takada, K. (2012). *Gibbsiella dentisursi* sp. nov., isolated from the bear oral cavity. *Microbiol. Immunol.* 56, 506–512. doi: 10.1111/j.1348-0421.2012.00464.x
- Sangüesa-Barreda, G., Camarero, J. J., Oliva, J., Montes, F., and Gazol, A. (2015). Past logging, drought and pathogens interact and contribute to forest dieback. *Agric. For. Meteorol.* 208, 85–94. doi: 10.1016/j.agrformet.2015.04.011
- Schaad, N. W., Jones, J. B., and Chun, W. (2001). *Laboratory guide for the identification of plant pathogenic bacteria (No. Ed. 3)*. St. Paul, MN: American Phytopathological Society (APS Press).
- Stackebrandt, E., and Liesack, W. (1993). “Nucleic acids and classification” in *Handbook of new bacterial systematics*. eds. M. Goodfellow and A. G. O’Donnell (London, England: Academic Press)
- Surico, G., Mugnai, L., Pastorelli, R., Giovannetti, L., and Stead, D. E. (1996). *Erwinia alni*, a new species causing bark cankers of alder (*Alnus miller*) species. *Int. J. Syst. Evol. Microbiol.* 46, 720–726. doi: 10.1099/00207713-46-3-720
- Suslow, T. V., Schroth, M. N., and Isaka, M. (1982). Application of a rapid method for gram differentiation of plant pathogenic and saprophytic bacteria without staining. *Phytopathology* 72:917. doi: 10.1094/Phyto-72-917
- Thompson, J. D., Higgins, D. G., and Gibson, T. J. (1994). CLUSTAL W: improving the sensitivity of progressive multiple sequence alignment through sequence weighting, position-specific gap penalties and weight matrix choice. *Nucleic Acids Res.* 22, 4673–4680. doi: 10.1093/nar/22.22.4673
- Tkaczyk, M., Celma, L., Runģis, D. E., and Bokuma, G. (2021). First report of *Brenneria goodwinii* and *Gibbsiella quercinecans* bacteria, detected on weakened oak trees in Poland. *Balt. For.* 27:563. doi: 10.46490/BF563
- Wilson, E. E., Starr, M. P., and Berger, J. A. (1957). Bark canker, a bacterial disease of the Persian walnut tree. *Phytopathology* 47, 669–673.
- Wilson, E. E., Zeitoun, F. M., and Fredrickson, D. L. (1967). Bacterial phloem canker, a new disease of Persian walnut trees. *Phytopathology* 57, 618–621.
- Yang, C. H., Gavilanes-Ruiz, M., Okinaka, Y., Vedel, R., Berthuy, I., Boccara, M., et al. (2002). *Hrp* genes of *Erwinia chrysanthemi* 3937 are important virulence factors. *Mol. Plant-Microbe Interact.* 15, 472–480. doi: 10.1094/MPMI.2002.15.5.472
- Zalkalns, O., and Celma, L. (2021). The distribution of bacteria *Gibbsiella quercinecans* and *Brenneria goodwinii* in oak (*Quercus robur* L.) stands in Latvia. In IOP Conference Series: Earth and Environmental Science.