

Diversity of carbapenem-resistant *Acinetobacter baumannii* and bacteriophage-mediated spread of the Oxa23 carbapenemase

Alaa Abouelfetouh¹, Jennifer Mattock², Dann Turner³, Erica Li² and Benjamin A. Evans^{2,*}

Abstract

Carbapenem-resistant *Acinetobacter baumannii* are prevalent in low- and middle-income countries such as Egypt, but little is known about the molecular epidemiology and mechanisms of resistance in these settings. Here, we characterize carbapenem-resistant *A. baumannii* from Alexandria, Egypt, and place it in a regional context. Fifty-four carbapenem-resistant isolates from Alexandria Main University Hospital (AMUH), Alexandria, Egypt, collected between 2010 and 2015 were genome sequenced using Illumina technology. Genomes were *de novo* assembled and annotated. Genomes for 36 isolates from the Middle East region were downloaded from GenBank. The core-gene complement was determined using Roary, and analyses of recombination were performed in Gubbins. Multilocus sequence typing (MLST) sequence type (ST) and antibiotic-resistance genes were identified. The majority of Egyptian isolates belonged to one of three major clades, corresponding to Pasteur MLST clonal complex (CC^{PAS}) 1, CC^{PAS}2 and ST^{PAS}158. Strains belonging to ST^{PAS}158 have been reported almost exclusively from North Africa, the Middle East and Pakistan, and may represent a region-specific lineage. All isolates carried an *oxa23* gene, six carried *bla*_{NDM-1} and one carried *bla*_{NDM-2}. The *oxa23* gene was located on a variety of different mobile elements, with Tn2006 predominant in CC^{PAS}2 strains, and Tn2008 predominant in other lineages. Of particular concern, in 8 of the 13 CC^{PAS}1 strains, the *oxa23* gene was located in a temperate bacteriophage phiOXA, previously identified only once before in a CC^{PAS}1 clone from the USA military. The carbapenem-resistant *A. baumannii* population in AMUH is very diverse, and indicates an endemic circulating population, including a region-specific lineage. A major mechanism for *oxa23* dissemination in CC^{PAS}1 isolates appears to be a bacteriophage, presenting new concerns about the ability of these carbapenemases to spread throughout the bacterial population.

DATA SUMMARY

The whole-genome shotgun sequences of the isolates from this study have been deposited at GenBank/ENA/DBJ under the BioProject accession number PRJNA659545. The individual genome accession numbers for each isolate are as follows: A1a, JACSUC000000000; A2, JACSUB000000000; A4, JACSVQ000000000; A5, JACSUA000000000; A6, JACSTZ000000000; A7-T, JACSV000000000; A8-T, JACSVO000000000; A8a, JACSTY000000000; A9, JACSTX000000000; A10, JACSTW000000000; A10a, JACSTV000000000; A11a, JACSTU000000000; A13a, JACSTT000000000; A14a, JACSTS000000000; A15, JACSTR000000000; A16, JACSTQ000000000; A18, JACSTP000000000; A21, JACSVN000000000; A22, JACSTO00000000; A27, JACSTN000000000; A30, JACSTM000000000; A31, JACSTL000000000; A34, JACSTK000000000; A35, JACSTJ000000000; A36, JACSTI000000000; A39, JACSTH000000000; A40, JACSTG000000000; A41, JACSTF000000000; A42, JACSTE000000000; A43, JACSTD000000000; A44, JACSTC000000000; A45, JACSTB000000000; A46, JACSTA000000000; A64, JACSSZ000000000; A68, JACSSY000000000; A69, JACSSX000000000; A70, JACSSW000000000; A71, JACSSV000000000; A72, JACSSU000000000; A74, JACSSR000000000; A75, JACSSS000000000; A78, JACSSQ000000000; A82, JACSSP000000000; A83, JACSVL000000000;

Received 16 September 2020; Accepted 29 November 2021; Published 01 February 2022

Author affiliations: ¹Department of Microbiology and Immunology, Faculty of Pharmacy, Alexandria University, Alexandria, Egypt; ²Norwich Medical School, University of East Anglia, Norwich, UK; ³Department of Applied Sciences, University of the West of England, Bristol, UK.

*Correspondence: Benjamin A. Evans, Benjamin.Evans@uea.ac.uk

Keywords: antibiotic resistance; Egypt; MLST; phiOXA; transposon; whole-genome sequencing.

Abbreviations: AMUH, Alexandria Main University Hospital; CC, clonal complex; IC, international clone; MLST, multilocus sequence typing; ST, sequence type.

The genome sequences of the *A. baumannii* isolates from this study have been deposited in GenBank under the BioProject accession number PRJNA659545.

Data statement: All supporting data, code and protocols have been provided within the article or through supplementary data files. Three supplementary figures are available with the online version of this article.

000752 © 2022 The Authors



This is an open-access article distributed under the terms of the Creative Commons Attribution License. This article was made open access via a Publish and Read agreement between the Microbiology Society and the corresponding author's institution.

Impact Statement

In this study, we have analysed the whole genomes of a group of antibiotic-resistant bacteria – *Acinetobacter baumannii* – from Alexandria, Egypt, to identify why they are antibiotic resistant, and how resistance is being spread between bacteria. This is to help address the current knowledge gap regarding the mechanisms and spread of antibiotic resistance in low- and middle-income countries like Egypt. We found that for the vast majority of bacteria, resistance was due to a specific gene – *oxa23*. However, the bacteria carrying this gene were very varied, showing that they do not represent a specific outbreak, but rather the continuous circulation of multiple different antibiotic-resistant lineages. A significant number of bacteria belonged to a subgroup that has only been sporadically reported from North Africa, the Middle East and Pakistan, providing evidence that there may be a specific subgroup of *A. baumannii* from this geographical region. Of particular significance, in a number of bacteria the *oxa23* gene was found to be carried by a bacteriophage – a virus that infects bacteria. We present evidence that it is likely that this bacteriophage is responsible for spreading the *oxa23* gene between bacteria, which is not currently widely recognized as a major mechanism for antibiotic-resistance dissemination.

A84, JACSSP000000000; A85, JACSSO000000000; A86, JACSVK000000000; A87, JACSSN000000000; A88, JACSSM000000000; A89, JACSSL000000000; A92, JACSSK000000000; A5910, JACSSJ000000000; A6135, JACSVJ000000000.

INTRODUCTION

The bacterium *Acinetobacter baumannii* is a major opportunistic hospital-acquired pathogen that is listed by the World Health Organization (WHO) as in critical need of new treatment options due to its multidrug-resistant nature [1]. In particular, the frequency of carbapenem-resistant *A. baumannii* has been steadily increasing over the last two decades, leaving very few treatment options available to combat this pathogen [2]. However, carbapenem-resistant *A. baumannii* are not uniformly distributed across the globe, with higher rates of resistance found in low- and middle-income countries [3–6], though rates in some southern and eastern European countries have now also reached very high levels [7]. In countries in the Middle East and North Africa, high levels of carbapenem-resistant *A. baumannii* are reported, with frequencies of 70% of isolates or greater being common [8]. Despite these very high rates of resistance, there are relatively few studies investigating the molecular epidemiology of the antibiotic-resistant strains.

Carbapenem resistance in *A. baumannii* is usually the result of the expression of an OXA-type β -lactamase, or occasionally metallo- β -lactamases such as the IMP, VIM and NDM groups [9]. The acquired OXA-type β -lactamases in *A. baumannii* are encoded by genes belonging to five main groups – *oxa23* (or *bla*_{OXA-23-like}), *oxa40* (or *bla*_{OXA-40-like}), *oxa58* (or *bla*_{OXA-58-like}), *oxa134* (or *bla*_{OXA-134-like}) and *oxa143* (or *bla*_{OXA-143-like}) [10, 11]. In addition, all *A. baumannii* carry an intrinsic OXA β -lactamase gene called *oxaAb* (or *bla*_{OXA-51-like}), certain alleles of which, when highly expressed due to the presence of an *ISAbal* insertion sequence upstream, can confer carbapenem resistance [12–14]. The most common of these resistance mechanisms globally is *oxa23* [15]. In Egypt, and other countries in the region, *oxa23* is so prevalent it can be found in up to 100% of carbapenem-resistant isolates, with frequencies greater than 70% being the norm [16–19]. In *A. baumannii*, *oxa23* is usually located on a transposon mobilized by one or more insertion sequences, which has enabled the resistance gene to be spread to many different plasmids and many different lineages within the species [20]. Despite the particularly high prevalence of *oxa23* in low- and middle-income countries such as Egypt, there are very few studies that have investigated the mobile genetic elements carrying the gene, which is crucial to gaining an understanding of the local population genetics of the species.

The majority of *A. baumannii* isolates belong to one of eight international clones (ICs), which correspond to specific multi-locus sequence typing (MLST) sequence types (STs) and clonal complexes (CCs) [15, 21]. There are two MLST schemes for *A. baumannii* – the Pasteur scheme [22] and the Oxford scheme [23], with the Pasteur scheme containing genes that are less prone to recombination than those in the Oxford scheme [24]. Globally, isolates belonging to IC2, corresponding to CC^{PAS}2, are the most common, though there are exceptions such as Latin American countries where isolates belonging to IC4 (CC^{PAS}15), IC5 (CC^{PAS}79) and IC7 (CC^{PAS}25) are predominant [25, 26]. In many low- and middle-income countries, MLST is too costly to perform on large numbers of isolates, and so at present we often rely on a small number of studies to provide an indication of what the national epidemiology may be. In Egypt, studies have indicated that CC^{PAS}2 is the most common CC, but that a large number of isolates from other CCs or that don't belong to any of the defined CCs make up a substantial portion of the population [16, 18, 19, 27]. The aim of our study was to define the local population structure of *A. baumannii* in Alexandria Main University Hospital (AMUH), Alexandria, Egypt, and identify the mobile genetic elements responsible for resistance-gene dissemination.

METHODS

Bacterial isolates and antimicrobial-susceptibility testing

A total of 54 carbapenem-resistant *A. baumannii* clinical isolates obtained from patients presenting at AMUH between 2010 and 2015 were included in the study. This is the largest hospital in the northern sector of Alexandria and a major referral hospital. The isolates were identified by conventional methods, including colony morphology, aerobic growth at 44 °C on MacConkey agar and species designations obtained using the Vitek system (bioMérieux). The identity of the isolates was further confirmed by PCR amplification of the intrinsic *oxaAb* (*bla*_{OXA-51-like}) gene, as well as MALDI-TOF MS (Bruker Daltonik). The identified isolates were stored at -80 °C prior to subsequent characterization [28]. The susceptibility of the isolates to imipenem and meropenem was determined using agar dilution, and the results were interpreted according to Clinical and Laboratory Standards Institute guidelines (2018) [29].

Whole-genome sequencing and analyses

Genomic DNA was extracted using the Wizard genomic DNA purification kit (Promega), according to the manufacturer's instructions. A Qubit fluorometer (Life Technologies) was used to quantify the extracted DNA. Dual indexing library preparation was carried out using the Nextera XT DNA preparation kit (Illumina). Whole-genome sequencing of the library was performed on an Illumina MiSeq using the 2×250 bp paired-end protocol. Following quality filtering of the reads using Trimmomatic v0.36 [30] and FastQC v0.11.5 [31], genomes were *de novo* assembled with Spades v3.11.1 [32], and annotated using Prokka v1.11 [33]. The assemblies were quality checked using QUAST [34]. The Sequence Read Archive (SRA) was searched using keywords of Middle Eastern countries, and the genomes of an additional 36 strains were downloaded and included in subsequent analyses. The genomes of a further 17 geographically and genomically diverse strains [35] were also downloaded and included in subsequent analyses. The core-genome content of the strain collection was determined using Roary v3.12.0 [36], and the core-gene phylogeny estimated using FastTree v2.1.10 [37]. Isolates A8-T and A74 were chosen to be the reference genomes for CC^{PAS1} and CC^{PAS2}, respectively, for subsequent variant calling. Sequences belonging to CC^{PAS1} and CC^{PAS2} were mapped to the reference genomes and variant called using PHENIX v1.3 [38]. A SnapperDB v1.0.6 for each CC was created, allowing inclusion of SNPs with a minimum mean read depth of 10 [39]. Whole-genome alignments were generated including isolates 10 000 SNPs from the CC1 reference and 20 000 SNPs from the CC2 reference, which were used as input for Gubbins. Estimates of recombination within clades identified in the phylogeny were conducted with Gubbins v2.3.1 using default settings [40]. The Pasteur MLST ST of each isolate was determined from the whole-genome sequence using the online Center for Genomic Epidemiology's MLST software [41], and antibiotic-resistance genes were determined using ARIBA [42] with the CARD [43] and SRST2 [44] databases. All *oxaAb* alleles were confirmed using the BLAST function on the Beta-Lactamase DataBase [11] (<http://www.bldb.eu/>). Analyses of the accessory genome were conducted using PANINI [45].

Annotation of phiOXA-A35 from the A35 genome assembly

The phiOXA-A35 sequence was constructed by alignment of three contigs and manual resolution of overlaps from assembly data obtained for *A. baumannii* A35. phiOXA ORFs were initially annotated using PROKKA v1.12 and then refined using BLASTP, InterProScan [46] and HHpred [47]. Prediction of tRNAs was performed using tRNAscan-SE 2.0 [48]. Alignments of the portal vertex and major capsid proteins were performed using Clustal Omega [49] and phylogenetic trees reconstructed using IQ-TREE v1.6.12 with ModelFinder, SH-aLRT test and ultrafast bootstrap with 1000 replicates [50–52]. Read coverage of phiOXA-A35 was calculated using QualiMap v2.2.2 [53].

Genetic environment of *oxa23*

In the program Geneious R10 (<https://www.geneious.com/>), for each *oxa23*-positive strain, the contig containing *oxa23* was identified, then all these contigs were aligned. The alignment was used to group strains by similarity of the sequence surrounding *oxa23*. Where appropriate, the presence of insertion sequences IS*Aba1* and IS*Aba125* surrounding the *oxa23* gene were confirmed by PCR using combinations of primers IS*Aba1*-B [54], OXA-23-F and OXA-23-R [55], and IS*Aba125*-F (5'-TAAACTATTTCATGAGCGCC-3'). To obtain the complete sequences of the prophages containing *oxa23*, contigs were aligned against the phiOXA sequence from strain AB5075-UW (GenBank accession no. CP008706.1). PCRs with primers Phi-F (5'-CGT TGT TGG GCT TCT AGT GC-3') and OXA-23-R [55] were used to confirm the contig joins either side of the IS*Aba1* insertion sequence.

Bacteriophage induction

Bacterial cultures were grown overnight in LB at 37 °C and shaking at 180 r.p.m. Overnight cultures were diluted to an OD₆₀₀ of approximately 0.05 using pre-warmed LB, then incubated at 37 °C and 180 r.p.m. until the OD₆₀₀ reached 0.2. Cultures were then divided to generate two treatment cultures and two control cultures per strain. Mitomycin C was added to a final concentration of 2 µg ml⁻¹ to the treatment cultures before they were wrapped in foil to block out light, then both treatment and control cultures were incubated at 37 °C. The OD₆₀₀ of cultures was recorded every 30 min to identify a marked drop in the optical density in the mitomycin

C-treated cultures, representing bacteriophage induction. Once this was observed, all cultures were centrifuged at 10 000 *g* for 5 min, filter sterilized through a 0.22 μm filter, and treated with DNase (TURBO DNase; Invitrogen) and RNase A (Thermo Scientific) to remove all bacteria and free nucleic acid from the cell lysate. The presence of intact bacteriophage carrying *oxa23* in the bacterial cell lysate was determined by PCR using primers OXaphi-F (5'-GGAAATGCGGTCAGAAATGC-3') situated within *oxa23* and OXaphi-R (5'-TGGACCCTGTAGATTTTGCC-3') situated within a phage tail protein gene, giving a 1032 bp product size. PCR conditions were 95 °C for 10 min; followed by 40 cycles of 95 °C for 30 s, 55 °C for 30 s and 72 °C for 1 min; with a final extension of 72 °C for 5 min. A 1 μl culture volume from a phiOXA-positive strain was used as a positive control.

Bacteriophage purification and sequencing

Clarified lysates were prepared from batch cultures of A35 treated with mitomycin C by centrifugation at 10 000 *g* for 10 min and filter sterilization (0.22 μm). Bacteriophages were precipitated by addition of NaCl and PEG 8000 to final concentrations of 1 M and 10 % (w/v), respectively. After storage overnight at 4 °C, precipitate was recovered by centrifugation at 11 000 *g* for 15 min at 4 °C and pellets resuspended in SM buffer (50 mM Tris-HCl, 8 mM MgSO₄, 100 mM NaCl, pH 7.5). Residual PEG was removed by the addition of an equal volume of chloroform and the aqueous phase recovered after centrifugation at 3000 *g* for 10 min at 4 °C. For the extraction of bacteriophage genomic DNA, samples were treated with DNase I and RNase A (Sigma Aldrich) for 1 h at 37 °C, before the addition of EDTA, SDS and proteinase K to final concentrations of 20 mM, 0.5% (w/v) and 50 $\mu\text{g ml}^{-1}$, respectively [56]. DNA was then purified using phenol:chloroform:isoamyl alcohol extraction. Preparation of libraries and sequencing of DNA was performed at the Genomic Services and Development Unit (now called the Central Sequencing Laboratory) (Public Health England) using an Illumina HiSeq1000 and 100 bp paired-end reads. Assembly was performed using SPAdes version 3.11.1 [32]. Sequence reads were mapped to the *de novo* assembled contigs and the A35 genome assembly using BWA-MEM [57], and assembly statistics obtained using QUAST [34] and Qualimap [53]. Annotation was performed as previously described.

RESULTS

Analysis of the antibiotic susceptibilities of the Egyptian isolates showed that, as expected due to the isolates being selected for their carbapenem resistance, they were all resistant to imipenem and meropenem (Table 1). The majority of Egyptian isolates belonged to one of three major well-supported clades based upon core-gene sequences, corresponding to Pasteur MLST CC (CC^{PAS}) 1 (13 isolates), CC^{PAS}2 (24 isolates) and ST^{PAS}158 (10 isolates) (Table 1, Fig. 1). CC^{PAS}1 isolates belong to IC1, while CC^{PAS}2 isolates belong to IC2 [21, 58]. In addition, two isolates belonged to ST^{PAS}15, which are members of IC4, and two isolates belonged to ST^{PAS}25, which are members of IC7 (Table 1). All isolates belonging to the ICs carried the *oxaAb* allele previously shown to be associated with their respective IC, with isolates in CC^{PAS}1 (IC1) carrying *oxaAb*(69), isolates in CC^{PAS}2 (IC2) carrying *oxaAb*(66), isolates in ST^{PAS}15 (IC4) carrying *oxaAb*(51), and isolates in ST^{PAS}25 (IC7) carrying the *oxaAb*(64) allele [59]. Isolates in ST^{PAS}158 carried *oxaAb*(65) alleles, which are usually associated with CC^{PAS}79 and IC5. However, it should be noted that the *oxaAb*(65) allele in the ST^{PAS}158 isolates differed from the original *oxaAb*(65) allele (GenBank accession no. AY750908) by three silent substitutions (T90C, C636T and A663G). We compared our ST^{PAS}158 isolates with other published or publicly available data, which demonstrated that this particular *oxaAb*(65) variant is a feature of ST^{PAS}158 isolates in general (Table 2), and is distinct from CC^{PAS}79 (IC5) isolates. Isolates from CC^{PAS}1 and CC^{PAS}2 were more diverse than ST^{PAS}158 isolates. This was evident in gene conservation analysis with 3069 genes shared by 90% of ST^{PAS}158 isolates, whereas only 2394 genes were shared by 90% of CC^{PAS}2 isolates, and 2600 genes shared by 90% of CC^{PAS}1 isolates. For all three of the major clades identified, the isolates from AMUH did not form their own specific sub-clades, but were interspersed with the strains both from other Middle Eastern countries, as well as with the globally distributed strains (Fig. 1). Interestingly a similar pattern was observed with respect to the accessory genome (Fig. 2). Based upon their accessory genomes, CC^{PAS}1, CC^{PAS}2 and ST^{PAS}158 isolates clustered together. The only exception was isolate 11a, which clustered with the CC^{PAS}2 isolates (the grey dot found on the right-hand edge of the orange CC^{PAS}2 cluster in Fig. 2a). However, this is not too surprising given that of all the non-CC^{PAS}2 isolates, 11a is most closely related to CC^{PAS}2 at the core-genome level (Fig. 1). The accessory genome clusters did not show any geographical signal (Fig. 2b), in agreement with the lack of geographical signal in the core-gene tree (Fig. 1). Together these data demonstrate two points: firstly, that there are both multiple circulating clonal lineages, and multiple circulating sub-lineages within each clonal lineage, that are responsible for infecting patients in AMUH; and, secondly, that while the accessory genome is shared across isolates from several different countries within a clonal lineage, there is little sharing of the accessory genome between clonal lineages.

All 54 isolates carried an *oxa23* gene (Table 1). In addition, six isolates also carried a *bla*_{NDM-1} gene, and one isolate carried *bla*_{NDM-2}. The *bla*_{NDM} genes were not clustered in one particular bacterial ST, with three of the *bla*_{NDM-1} genes located in CC^{PAS}1 isolates (in one ST), while the other three were located in CC^{PAS}2 isolates (across two STs) (Table 1, Fig. 1). While complete transposons could not be identified due to the limitations of short-read sequence data, all *bla*_{NDM-1} genes had an IS*Aba125* insertion sequence upstream and a *ble* bleomycin-resistance gene followed by a *trpF* phosphoribosylanthranilate isomerase gene downstream, as has typically been found in *A. baumannii* in other studies [60]. In two isolates (A86 and A6135) where longer contigs containing the *bla*_{NDM-1} gene were assembled, it appears likely that the *bla*_{NDM-1} gene is carried

Table 1. Carbapenem-susceptibility data, MLST assignments, carbapenem-resistance genes and associated mobile genetic elements of Egyptian isolates

Strain	MICs (mg l ⁻¹)		MLST (Pasteur)		Resistance gene		<i>oxa23</i> mobile element*
	IMI	MER	ST	CC	<i>oxaAb</i>	<i>oxa23/bla_{NDM-1/2}</i>	
1a	4	32	664	2	66	<i>oxa23</i>	A
2	8	64	1	1	69	<i>oxa23, bla_{NDM-1}</i>	ND
4	16	256	1	1	69	<i>oxa23</i>	ND
5	32	64	25	25	64	<i>oxa23</i>	A
6	8	32	1	1	69	<i>oxa23</i>	phiOXA
7-T	8	64	1	1	69	<i>oxa23</i>	phiOXA
8-T	8	64	1	1	69	<i>oxa23</i>	phiOXA
8a	16	32	15	15	51	<i>oxa23</i>	A
9	8	64	158	158	65	<i>oxa23</i>	H
10	8	32	158	158	65†	<i>oxa23</i>	C
10a	16	32	2	2	66	<i>oxa23</i>	A
11a	16	32	1535	–	65‡	<i>oxa23</i>	E
13a	4	32	664	2	66	<i>oxa23</i>	A
14a	16	16	664	2	66	<i>oxa23</i>	A
15	8	64	25	25	64	<i>oxa23</i>	A
16	8	64	85	–	94	<i>oxa23</i>	ND
18	8	64	19	1	69	<i>oxa23</i>	J
21	32	64	1	1	69	<i>oxa23, bla_{NDM-1}</i>	phiOXA
22	8	32	2	2	66	<i>oxa23</i>	A
27	8	32	2	2	66	<i>oxa23</i>	F
30	8	32	158	158	65	<i>oxa23</i>	ND
31	16	64	15	15	51	<i>oxa23</i>	G
34	8	64	158	158	65	<i>oxa23</i>	ND
35	4	64	1	1	69	<i>oxa23</i>	phiOXA
36	8	64	158	158	65	<i>oxa23</i>	ND
39	4	64	1	1	69	<i>oxa23</i>	phiOXA
40	32	64	1	1	69	<i>oxa23, bla_{NDM-1}</i>	ND
41	16	32	–	–	69	<i>oxa23</i>	phiOXA
42	32	64	158	158	65	<i>oxa23</i>	B
43	16	64	158	158	65	<i>oxa23</i>	B
44	8	64	158	158	65	<i>oxa23</i>	B
45	32	32	158	158	65	<i>oxa23</i>	ND
46	8	16	1	1	69§	<i>oxa23</i>	phiOXA
64	8	64	664	2	66	<i>oxa23</i>	A
68	8	32	158	158	65	<i>oxa23</i>	D
69	8	32	2	2	66	<i>oxa23</i>	C

Continued

Table 1. Continued

Strain	MICs (mg l ⁻¹)		MLST (Pasteur)		Resistance gene		<i>oxa23</i> mobile element*
	IMI	MER	ST	CC	<i>oxaAb</i>	<i>oxa23/bla</i> _{NDM-1/2}	
70	16	32	103	–	70	<i>oxa23, bla</i> _{NDM-2}	ND
71	8	32	2	2	66	<i>oxa23</i>	F
72	16	64	2	2	66	<i>oxa23</i>	A
73	8	64	2	2	66	<i>oxa23</i>	A
74	8	32	664	2	66	<i>oxa23</i>	A
75	8	16	2	2	66	<i>oxa23</i>	F
78	8	16	570	2	+	<i>oxa23, bla</i> _{NDM-1}	A
82	64	64	2	2	66	<i>oxa23</i>	C
83	64	64	2	2	66	<i>oxa23</i>	A
84	64	64	2	2	66	<i>oxa23</i>	A
85	64	32	2	2	66	<i>oxa23</i>	A
86	64	>256	570	2	66	<i>oxa23, bla</i> _{NDM-1}	A
87	64	64	1	1	69	<i>oxa23</i>	I
88	64	64	2	2	66	<i>oxa23</i>	A
89	64	64	2	2	66	<i>oxa23</i>	F
92	32	64	2	2	66¶	<i>oxa23</i>	A
5910	128	>256	2	2	66	<i>oxa23</i>	A
6135	8	32	600	2	66	<i>oxa23, bla</i> _{NDM-1}	A

IMI, Imipenem; MER, meropenem.

*ND, Not determined; the Illumina sequence data was not able to resolve contigs showing the genetic environment of *oxa23* in these isolates.

†Contig break giving incomplete gene, with 243/243 amino match to *oxaAb*(65).

‡Contig break giving incomplete gene, with 265/266 amino acid match to *oxaAb*(65).

§Contig break giving incomplete gene, with 266/266 amino acid match to *oxaAb*(69).

||*oxaAb* gene was not identified in genome sequence, but was positive by PCR.

¶Contig break giving incomplete gene, with 266/266 amino acid match to *oxaAb*(66).

on a transposon similar to Δ Tn125 as described by Bonnin *et al.* [61] as an IS*Aba14* fragment was detected following the *dct* gene. However, further investigation using technology such as long-read sequencing is required to completely resolve these mobile elements. The *bla*_{NDM-2} gene in isolate A70 was located within the previously described transposon Tn125 [60]. The *oxa23* gene was located on a variety of different mobile genetic elements, with 11 different structures identified (Table 1, Figs 3 and 4). Several of these structures were found in multiple isolates: structure A, representing Tn2006 [62], was the most common and was found in 21 isolates, 18 of which belonged to CC^{PAS2}, 2 belonged to CC^{PAS25} and 1 to CC^{PAS15}; structure B was found exclusively in 3 ST^{PAS158} isolates; structure C in 1 ST^{PAS158} and 2 CC^{PAS2} isolates; and structure F in 4 CC^{PAS2} isolates and appeared to be borne on the chromosome (Table 1, Fig. 3). Of particular concern, in 8 of the 13 CC^{PAS1} strains carrying *oxa23*, the carbapenemase gene was located in prophage called phiOXA. This prophage has been identified only once before in the CC^{PAS1} isolate AB5075-UW, derived from a strain isolated in 2008 from a USA soldier at the Walter Reed Army Medical Centre, USA, but to our knowledge has not been shown to be viable [63]. In order to determine whether phiOXA can form viable viral particles that contain the *oxaAb* gene, four isolates encoding phiOXA (A8-T, A21, A35 and A39) and one isolate that did not (A18) were treated with mitomycin C to induce bacteriophage, followed by DNase and RNase treatment to remove any DNA that is not contained within a virus particle. Then, a PCR for *oxa23*, with an extended initial denaturation phase to lyse bacteriophage particles, was used to identify the carriage of the antibiotic-resistance gene by the bacteriophage. Cultures of three of the four isolates tested (A8-T, A35 and A39) that had been treated with mitomycin C were found to have produced intact bacteriophage carrying *oxa23*. No PCR products for *oxa23* were detected for these strains when they were not induced, nor for isolate A18 (phiOXA negative) with either the presence or absence of mitomycin C treatment. To confirm these data, virions from cultures of A35 exposed to mitomycin C were purified and sequenced.

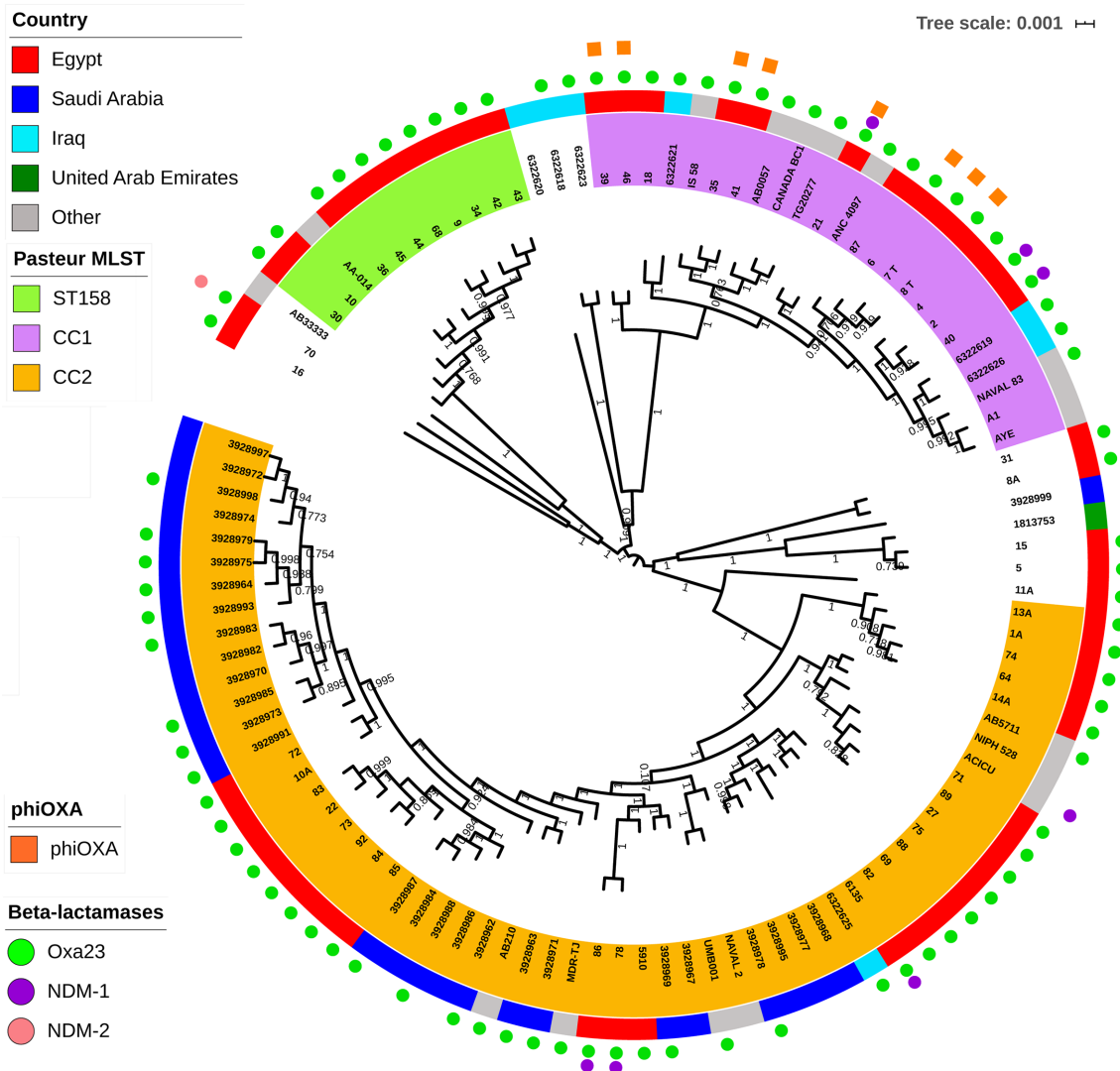


Fig. 1. Core-gene tree of all isolates. In the centre is the core-gene tree generated in FastTree [37] using a core-alignment output from Roary [36]. The tree is scaled by genetic distance, and branch labels indicate level of support based upon the Shimodaira–Hasegawa test using 1000 resamples. Leaves are labelled with isolate names or SRA (Sequence Read Archive) accession numbers, and are colour coded to highlight the three major Pasteur MLST scheme CCs or STs identified in this study. The ST/CC of isolates that are not coloured can be seen in Table 1. The outer solid coloured ring indicates the geographical source of the isolates. The outer rings of shapes indicate β -lactamases and phiOXA encoded by the isolates.

Two contigs corresponding to phiOXA and a second predicted prophage were identified. Due to extremely high coverage of the second prophage, an assembly was performed using a random subset of 10% of the paired-end reads. Alignment of the complete dataset showed that the majority of sequence reads mapped to this prophage (89%) yielding a coverage of 5651 \times . For phiOXA-A35, a contig was identified in all assemblies, regardless of the proportion of reads employed, representing 6% of the total reads and a coverage of 477 \times . Comparison of this contig to the AB5075-UW genome using BLASTN showed 100% coverage and identity to the phiOXA prophage in this strain, and annotation confirmed the presence of the *oxa23* carbapenemase. Collectively, these data demonstrate that the phiOXA prophage in these isolates can be induced and form intact bacteriophage particles, and that these bacteriophages carry the *oxa23* gene. Further work is required to identify a susceptible host for phiOXA-A35 in order to demonstrate lysogenic conversion to a carbapenem-resistance phenotype.

Analysis of the sequence of phiOXA-A35 showed it is identical to the bacteriophage/prophage reported in strain AB5075-UW (Fig. 4), with mean read coverage of 22 ($sd=7$). The phiOXA-A35 prophage consists of a contiguous 32 kb region comprising 48 ORFs with the *attL* site residing within a tRNA-Leu, as was seen previously in strain AB5075-UW. The genomic architecture of phiOXA-A35 is similar to that of members of the *Peduvirinae*, a widespread subfamily of temperate bacteriophages that infect γ - and β -proteobacteria and includes Escherichia phage P2 and Pseudomonas phage phiCTX. The genome can be

Table 2. CC^{PAS}158 and CC^{OX}499 isolates reported in the literature or in public databases

Isolate†	ST ^{PAS}	ST ^{OX}	Country	Year	oxaAb‡	Accession no.	Reference
10 isolates	158	499§	Egypt	2010–15	65*	–	This study
1309; 2226C	158	–	Turkey	2009	–	–	PubMLST
2313; AA-014	158	960	Iraq	2008	65*	GCA_000335595	[89]
3826; 778944; ABC002	158	1717	Egypt	2012	–	–	PubMLST
K50	158	–	Kuwait	2008	65*	OHJL00000000	[90]
Unnamed	158	–	Lebanon	2013	65*	–	[91]
Ab-Pak-Pesh-01	158	–	Pakistan	2015	65*	SMUB01000000	[68]
Ab-Pak-Pesh-07	158	–	Pakistan	2015	65*	QQPV00000000	[68]
Ab-Pak-Pesh-28	158	–	Pakistan	2015	65*	QQPZ00000000	[68]
AMA 341	158	499	Denmark	2012	65¶	SAMN03160609	[92]
2 isolates	158	–	Kuwait	2011–12	–	–	[93]
ACB69C	158	–	Turkey	2009–11	–	–	[94]
30 isolates	158	–	Kuwait	2007–08	66	–	[95]
7 isolates	158	499	Tunisia	2008–09	–	–	[96]
1830; J17	342	–	China	2011	–	–	[97]
3840; ACIN00151	342	1776	USA	2016	694	PubMLST#	PubMLST
2178; A.baumannii64	615	–	Egypt	2012	–	–	[16]
2180; A.baumannii85	615	–	Egypt	2013	–	–	[16]
2182; A.baumannii108	618	–	Egypt	2013	–	–	[16]
3950; TR112	1241	–	Turkey	2016	–	–	PubMLST
8 isolates	–	499	Egypt	2015	–	–	[27]
2 isolates	–	499	Saudi Arabia	2011–13	–	–	[19]
1 isolate	–	499	Kuwait	2011–13	–	–	[19]

†If an isolate is known by more than one name, all names are provided separated by semicolons.

‡The *oxaAb*(65*) alleles differ from the original *oxaAb*(65) sequence by three silent substitutions.

§One isolate did not have its ST^{OX} determined.

||This isolate was likely imported from Egypt.

¶The authors did not state whether the nucleotide sequence differed from the original *oxaAb*(65) sequence.

#This genome is available through the PubMLST website.

divided into four modules, representing genes involved in virion morphogenesis and assembly that contains the diagnostic *Q-P-O-N-M-L capsid gene cluster* [64], lysis, replication, and control of lysogeny. This relationship is further supported by phylogenetic analysis of the portal vertex and major capsid protein (Figs S1 and S2, available with the online version of this article). Apart from a single syntenic break with *ISAbal*, *oxa23* and a gene encoding a DUF815 domain protein, phiOXA is nearly identical to predicted prophage regions found in *A. baumannii* strains A85, AYE, DA33382, USA15 and WCHAB005078. Comparison of these regions using VIRIDIC [65] suggests that they represent a single species of temperate bacteriophage, as each exhibit >95% sequence similarity [66]. We propose that phiOXA-A35 represents a new genus within the subfamily *Peduvirinae*. A total of eight phiOXA ORFs are annotated as hypothetical proteins and whether these represent additional proteins that influence the pathobiology or environmental fitness of their host lysogen remains to be elucidated.

The two most likely scenarios that could explain the presence of phiOXA in multiple CC^{PAS}1 isolates are (i) that the bacteriophage inserted once into a CC^{PAS}1 isolate and has then spread via vertical transmission, or (ii) that phiOXA has independently infected multiple isolates. In order to investigate this, we examined the apparent insertion site (trNA-Leu) for all isolates included in the CC^{PAS}1 clade in Fig. 1. Our analyses showed that within the CC^{PAS}1 clade, isolates carrying phiOXA are not monophyletic and are found in four separate sub-clades, indicating acquisition of phiOXA is likely to have occurred on

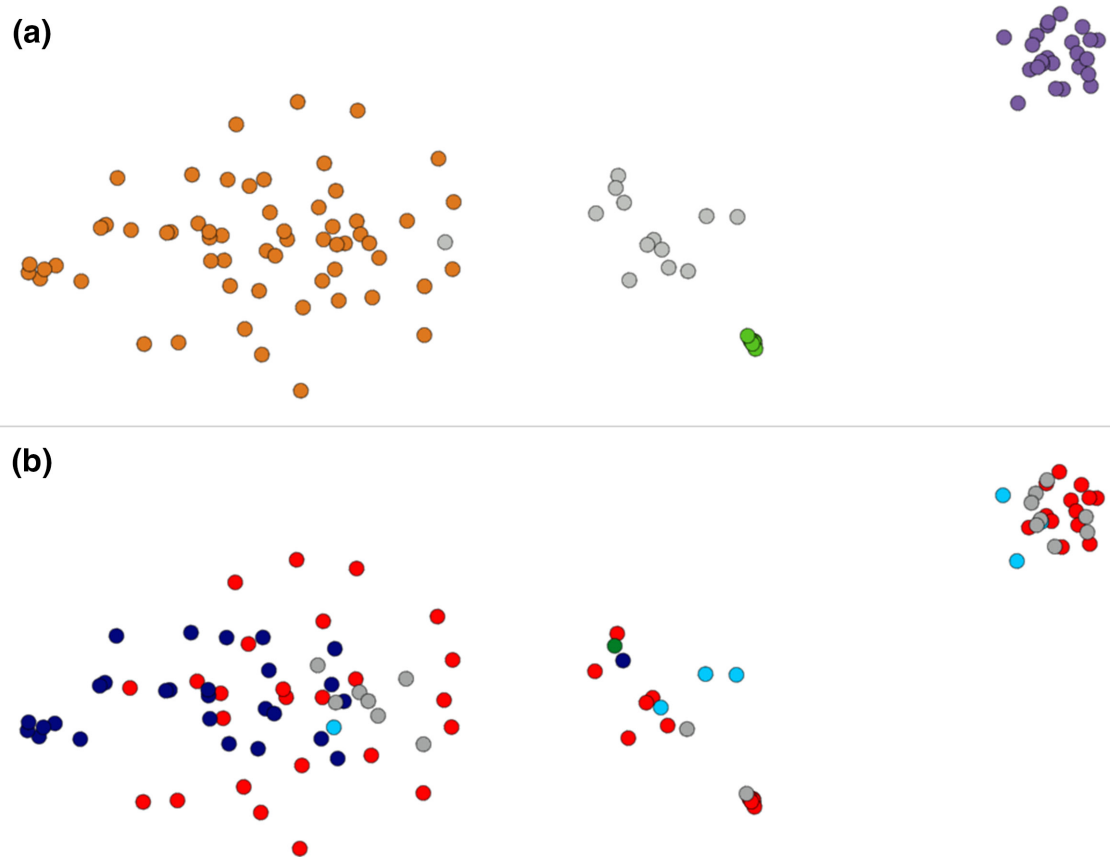


Fig. 2. Clustering of isolates by similarity of their non-core genomes using PANINI. Each dot represents an isolate, and the distance between isolates indicates the similarity of their accessory genomes. (a) The network is coloured according to the MLST data as in Fig. 1 (CC1 is purple, CC2 is orange, ST158 is green and other STs are grey). (b) The network is coloured according to the country of origin of the isolates as in Fig. 1 (Egypt is red, Saudi Arabia is dark blue, Iraq is light blue, the United Arab Emirates is green and other countries outside the Middle East are grey).

at least four independent occasions (Fig. S3). These data, combined with the demonstration that complete bacteriophage particles carrying *oxa23* are released by the bacteria, suggest that phiOXA has been spreading through the CC^{PAS}1 population via horizontal transmission of the bacteriophage.

DISCUSSION

In this study, we aimed to use genomics to characterize the molecular epidemiology and carbapenem resistance of *A. baumannii* isolates from Alexandria, Egypt. Genome-level studies of this nature from low- and middle-income countries are not common, despite the fact that these countries bear the highest burden of antibiotic resistance. By using genomics, we can simultaneously characterize antibiotic-resistance genes and the genetic environment supporting them, and the fine-scale epidemiological relationships between isolates. It also has the added benefit of being backward-compatible with previous typing methods such as MLST. In the context of Egypt, there are a few studies that have used one of the MLST schemes for *A. baumannii* – either the Pasteur scheme [22] (as used in this study) or the Oxford scheme [23] – to investigate the relatedness of isolates. Where studies have used MLST, the most commonly identified CC is CC^{PAS}2 (CC^{OX}208). However, a considerable proportion of isolates are often found to belong to less common CCs or are singletons [16, 19, 27, 67]. This is entirely consistent with the results from our study, where 44% of isolates belonged to CC^{PAS}2, 24% of isolates belonged to CC^{PAS}1 and 19% belonged to ST^{PAS}158. The core-genome analysis we conducted demonstrated that even within MLST STs there was a lot of diversity. This shows that multiple carbapenem-resistant strains are present within AMUH, suggesting that rather than facing an outbreak, the bacterium is endemic. Whether patients are acquiring these strains once admitted to the hospital or whether there is widespread circulation of carbapenem-resistant *A. baumannii* in the community is an open question that we hope to address in the future.

While CC^{PAS}1 and CC^{PAS}2 strains are globally distributed and frequently encountered, strains belonging to ST^{PAS}158 have been reported far less frequently and from a more focused geographical area. ST^{PAS}158 belongs to CC^{PAS}158 (CC^{OX}499) [68], and is

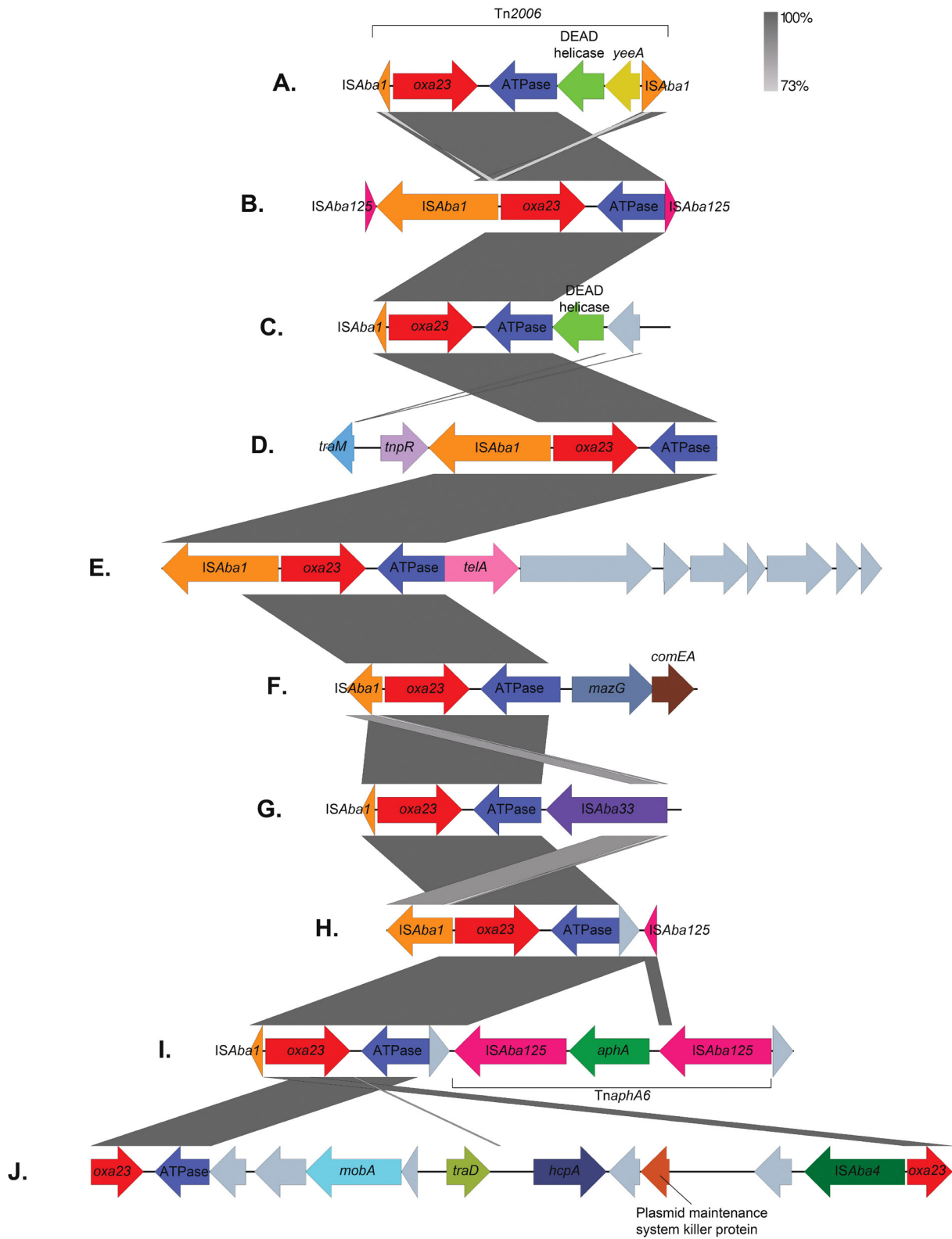


Fig. 3. Genetic environments surrounding *oxa23* genes. Arrows represent genes, which are colour-coded by their type. Unlabelled grey genes represent hypothetical proteins. The size of the genes and the distances between them are drawn to scale. Vertical grey boxes indicate homology between sequences ranging between 73 and 100% identity (BLASTN). The diagram was created using Easyfig [98] and annotated in Adobe Photoshop.

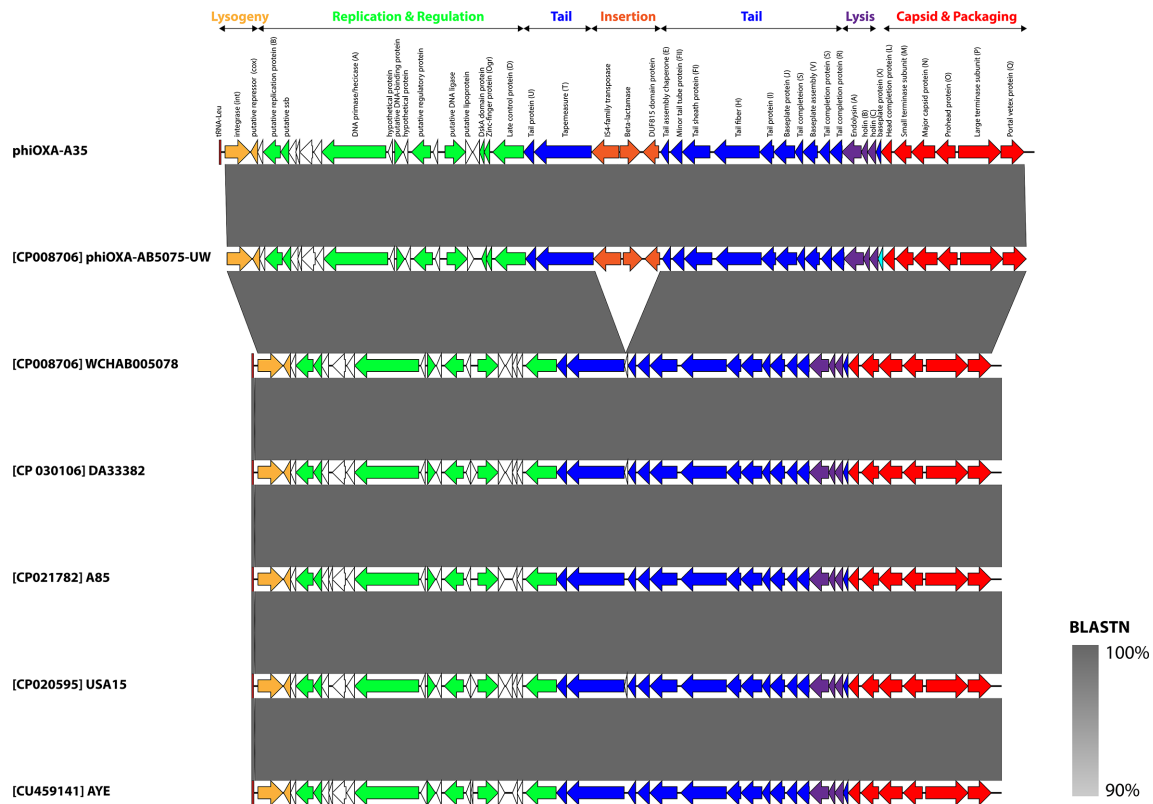


Fig. 4. Schematic genome map of phiOXA-A35 and related prophages. Prophages are orientated as they appear in their host genome. Arrows depict ORFs and are coloured according to function. Homologues to gene products in Escherichia phage P2 are indicated in parentheses. ORFs encoding hypothetical proteins are shown as black outlines. The tRNA-Leu, representing the *attL* site, is shown as a dark red rectangle. Shading between entries represents the per cent identity (BLASTN) from 90% (light grey) to 100% (dark grey). The map was constructed using Easyfig [98] and annotated in Adobe Illustrator.

usually found in isolates from North Africa, the Middle East and Pakistan (Table 2). Most previous studies that have identified CC^{PAS}158 isolates have found them to carry the *OxaAb* variant *OxaAb*(65). However, in CC^{PAS}158 strains, the *oxaAb*(65) allele differs from the original allele (GenBank accession no. AY750908) by three synonymous substitutions. As the *oxaAb* genes are intrinsic to *A. baumannii* and specific alleles are associated with certain ICs, the gene can be used as a useful epidemiological marker to identify the IC an isolate belongs to [59, 69, 70]. However, under this scheme, *OxaAb*(65) is associated with IC5. Isolates belonging to IC5 are members of CC^{PAS}79 and are found at particularly high frequency in Latin America [15, 59, 71, 72]. The allele profiles of the founder STs of CC^{PAS}158 and CC^{PAS}79 (ST^{PAS}158 and ST^{PAS}79, respectively) are quite different, sharing only one of the seven alleles (*rplB* allele 4), which at the nucleotide level translates to 13 SNPs. It is clear, therefore, that in this instance numbering the *oxaAb* alleles based upon their amino acid sequence can mask important epidemiological information and that, as suggested by Karah *et al.* [68], these genes should be numbered according to their nucleotide sequences as has been done for the *Acinetobacter ampC* genes [73].

Previous studies of *A. baumannii* in Egypt have found that rates of carbapenem resistance are high, typically >70% [17, 74], and that this is usually associated with isolates carrying the *oxa23* gene with carriage frequencies reaching as high as 100% in carbapenem-resistant isolates [16–18]. This was reflected in our study, where *oxa23* was carried by 100% of carbapenem-resistant isolates. Reports of the metallo- β -lactamases NDM-1 and NDM-2 being encoded by isolates from Egypt indicate frequencies of *bla*_{NDM-1} can typically reach up to 30% [18, 75, 76], though reports from specific hospitals can occasionally report higher frequencies [16, 77]. This is in line with our study where six isolates (11%) carried a *bla*_{NDM-1} gene and only one isolate (2%) carried a *bla*_{NDM-2} gene. It is possible that the almost ubiquitous nature of the *oxa23* gene has reduced the selective advantage for subsequent acquisition and retention of *bla*_{NDM} genes, limiting their spread within *A. baumannii*. The *oxa23* gene in *A. baumannii* is typically carried on a transposon mobilized by insertion sequences, usually *ISAbal* [10]. The insertion sequence elements are located immediately upstream of the *oxa23* gene, where they provide a promoter sequence that drives high-level expression of *oxa23* [13, 62]. The most commonly reported transposons carrying *oxa23* are Tn2006, which is a composite transposon where *oxa23* and three other genes are bracketed by two *ISAbal* elements [62], and Tn2008, which is a one-ended transposon with a single *ISAbal* element

upstream of the *oxa23* gene [78]. While the limitations of short-read sequencing in enabling the assembly of transposons is well known, in our study we were nevertheless able to identify a large number of different genetic arrangements surrounding the *oxa23* gene. In line with what is reported in the literature, a structure likely to be Tn2006 was the most common arrangement in our isolates. However, the large number of different structures we have identified involving IS*Aba*125, IS*Aba*33 and IS*Aba*4 in addition to IS*Aba*1 demonstrate that the carbapenem-resistant *A. baumannii* population in AMUH is not dominated by a single mobile element that is disseminating *oxa23*. Rather, a multitude of different mobile elements are hosting the gene, consistent with the apparent endemic nature of *oxa23* in the bacterial population, where multiple *A. baumannii* lineages co-circulate and there is the opportunity for persistent transfer, re-arrangement and selection to occur over an extended period of time.

The carriage of antibiotic-resistance genes on transposons is common, and is the typical genetic context for OXA-type carbapenemases in *A. baumannii*. However, in isolates belonging to CC^{PAS}1 in our study, the most commonly identified mobile element carrying *oxa23* was a bacteriophage phiOXA. Reports of the carriage of antibiotic-resistance genes in prophages have become more common in recent years [79–81], but it is thought that this is generally a rare occurrence [82]. However, recent evidence from studies focusing on *A. baumannii* have suggested that carriage of both virulence and antibiotic-resistance genes by prophages is relatively common in this species and may be a major mechanism of horizontal transfer of these genes [83–87]. It was recently noted that prophages appeared to be more common in IC5 isolates than in those belonging to IC1 or IC2 [85], and it is an intriguing possibility that prophages may be a major factor in the evolution of different ICs. The carriage of OXA-type carbapenemases in prophages has been observed previously, with *oxa58* identified on a prophage in a *Proteus mirabilis* strain [88], and *oxa23* identified on a prophage in *A. baumannii* strain ANC 4097 [83, 84] and on the phage phiOXA in isolate AB5075-UW [63]. However, López-Leal *et al.* [85] recently indicated that OXA carbapenemases in prophages may be more widespread, with evidence for potential OXA prophage carriage in approximately 25% of isolates studied. Similarly, we found *oxa23* carried on phiOXA in 15% of our isolates. Moreover, these isolates were not clonally related within CC^{PAS}1 but were spread throughout the CC^{PAS}1 clade, indicating that phiOXA is widely disseminated amongst CC^{PAS}1 isolates in AMUH. Furthermore, we demonstrated that phiOXA can be induced and that the induced phage particles are carrying the *oxa23* gene. It is clear, therefore, that in *A. baumannii*, bacteriophages could be a major mechanism for the mobilization of antibiotic-resistance genes, including those of greatest clinical concern such as the carbapenemases. As more genomic studies using long-read sequencing are conducted that can properly resolve complex mobile element structures, the true magnitude of bacteriophage-mediated antibiotic-resistance gene carriage will be revealed.

Funding information

A.A. was funded by a Newton-Mosharafa Program Researcher Links Travel Grant (Egyptian STDF project ID 26235). J.M. was funded by a PhD studentship from the University of East Anglia. D.T. was funded by the University of the West of England. E.L. was funded by a University of East Anglia Norwich Medical School/Faculty of Medicine and Health Sciences PhD studentship. B.A.E. was funded by the University of East Anglia.

Author contributions

B.A.E. and A.A. were involved in the conceptualization, methodology, investigation, writing (original draft preparation, review and editing) and funding of the study. J.M. and D.T. were involved in the methodology, investigation and writing (original draft preparation, review and editing) of the study. E.L. was involved in the investigation and writing (review and editing) of the study.

Conflicts of interest

The authors declare that there are no conflicts of interest.

References

1. WHO. *Global Priority List of Antibiotic-Resistant Bacteria to Guide Research, Discovery, and Development of New Antibiotics*. Geneva: World Health Organization; 2017.
2. Antunes LCS, Visca P, Towner KJ. *Acinetobacter baumannii*: evolution of a global pathogen. *Pathog Dis* 2014;71:292–301.
3. Rodríguez CH, Nastro M, Famiglietti A. Carbapenemases in *Acinetobacter baumannii*: review of their dissemination in Latin America. *Rev Argent Microbiol* 2018;50:327–333.
4. Kempf M, Rolain JM. Emergence of resistance to carbapenems in *Acinetobacter baumannii* in Europe: clinical impact and therapeutic options. *Int J Antimicrob Agents* 2012;39:105–114.
5. Hu F, Zhu D, Wang F, Wang M. Current status and trends of antibacterial resistance in China. *Clin Infect Dis* 2018;67:S128–S134.
6. Hsu LY, Apisarnthanarak A, Khan E, Suwantararat N, Ghafur A, *et al.* Carbapenem-resistant *Acinetobacter baumannii* and *Enterobacteriaceae* in South and Southeast Asia. *Clin Microbiol Rev* 2017;30:1–22.
7. Kostyanov T, Vilken T, Lammens C, Timbermont L, Van't Veen A, *et al.* Detection and prevalence of carbapenem-resistant Gram-negative bacteria among European laboratories in the COMBACTE network: a COMBACTE LAB-Net survey. *Int J Antimicrob Agents* 2019;53:268–274.
8. Moghnieh RA, Kanafani ZA, Tabaja HZ, Sharara SL, Awad LS, *et al.* Epidemiology of common resistant bacterial pathogens in the countries of the Arab League. *Lancet Infect Dis* 2018;18:e379–e394.
9. Potron A, Poirel L, Nordmann P. Emerging broad-spectrum resistance in *Pseudomonas aeruginosa* and *Acinetobacter baumannii*: mechanisms and epidemiology. *Int J Antimicrob Agents* 2015;45:568–585.
10. Evans BA, Amyes SGB. OXA β -lactamases. *Clin Microbiol Rev* 2014;27:241–263.
11. Naas T, Oueslati S, Bonnin RA, Dabos ML, Zavala A, *et al.* Beta-lactamase database (BLDB) – structure and function. *J Enzyme Inhib Med Chem* 2017;32:917–919.
12. Takebayashi Y, Findlay J, Heesom KJ, Warburton PJ, Avison MB, *et al.* Variability in carbapenemase activity of intrinsic OxaAb (OXA-51-like) β -lactamase enzymes in *Acinetobacter baumannii*. *J Antimicrob Chemother* 2021;76:587–595.

13. Turton JF, Ward ME, Woodford N, Kaufmann ME, Pike R, et al. The role of ISAbal in expression of OXA carbapenemase genes in *Acinetobacter baumannii*. *FEMS Microbiol Lett* 2006;258:72–77.
14. Nigro SJ, Hall RM. Does the intrinsic oxaAb (blaOXA-51-like) gene of *Acinetobacter baumannii* confer resistance to carbapenems when activated by ISAbal? *J Antimicrob Chemother* 2018;73:3518–3520.
15. Higgins PG, Dammhayn C, Hackel M, Seifert H. Global spread of carbapenem-resistant *Acinetobacter baumannii*. *J Antimicrob Chemother* 2010;65:233–238.
16. El-Sayed-Ahmed MAE-G, Amin MA, Tawakol WM, Loucif L, Bakour S, et al. High prevalence of bla(NDM-1) carbapenemase-encoding gene and 16S rRNA armA methyltransferase gene among *Acinetobacter baumannii* clinical Isolates in Egypt. *Antimicrob Agents Chemother* 2015;59:3602–3605.
17. Fouad M, Attia AS, Tawakkol WM, Hashem AM. Emergence of carbapenem-resistant *Acinetobacter baumannii* harboring the OXA-23 carbapenemase in intensive care units of Egyptian hospitals. *Int J Infect Dis* 2013;17:e1252–4.
18. Al-Hassan L, Zafer MM, El-Mahallawy H. Multiple sequence types responsible for healthcare-associated *Acinetobacter baumannii* dissemination in a single centre in Egypt. *BMC Infect Dis* 2019;19:829.
19. Zowawi HM, Sartor AL, Sidjabat HE, Balkhy HH, Walsh TR, et al. Molecular epidemiology of carbapenem-resistant *Acinetobacter baumannii* isolates in the Gulf Cooperation Council States: dominance of OXA-23-type producers. *J Clin Microbiol* 2015;53:896–903.
20. Nigro SJ, Hall RM. Structure and context of *Acinetobacter transposons* carrying the oxa23 carbapenemase gene. *J Antimicrob Chemother* 2016;71:1135–1147.
21. Zarrilli R, Pournaras S, Giannouli M, Tsakris A. Global evolution of multidrug-resistant *Acinetobacter baumannii* clonal lineages. *Int J Antimicrob Agents* 2013;41:11–19.
22. Diancourt L, Passet V, Nemeč A, Dijkshoorn L, Brisse S. The population structure of *Acinetobacter baumannii*: expanding multiresistant clones from an ancestral susceptible genetic pool. *PLoS One* 2010;5:e10034.
23. Bartual SG, Seifert H, Hippler C, Luzon MAD, Wisplinghoff H, et al. Development of a multilocus sequence typing scheme for characterization of clinical isolates of *Acinetobacter baumannii*. *J Clin Microbiol* 2005;43:4382–4390.
24. Gaiarsa S, Batisti Biffignandi G, Esposito EP, Castelli M, Jolley KA, et al. Comparative analysis of the two *Acinetobacter baumannii* multilocus sequence typing (MLST) schemes. *Front Microbiol* 2019;10:930.
25. Hamidian M, Nigro SJ. Emergence, molecular mechanisms and global spread of carbapenem-resistant *Acinetobacter baumannii*. *Microb Genom* 2019;5:e000306.
26. Rodríguez CH, Balderrama Yaruhi N, Nastro M, Nuñez Quezada T, Castro Cañarte G, et al. Molecular epidemiology of carbapenem-resistant *Acinetobacter baumannii* in South America. *J Med Microbiol* 2016;65:1088–1091.
27. Ghaith DM, Zafer MM, Al-Agamy MH, Alyamani EJ, Booq RY, et al. The emergence of a novel sequence type of MDR *Acinetobacter baumannii* from the intensive care unit of an Egyptian tertiary care hospital. *Ann Clin Microbiol Antimicrob* 2017;16:34.
28. Abouelfetouh A, Torky AS, Aboulmagd E. Phenotypic and genotypic characterization of carbapenem-resistant *Acinetobacter baumannii* isolates from Egypt. *Antimicrob Resist Infect Control* 2019;8:185.
29. Abouelfetouh A, Torky AS, Aboulmagd E. Role of plasmid carrying blaNDM in mediating antibiotic resistance among *Acinetobacter baumannii* clinical isolates from Egypt. *3 Biotech* 2020;10:170.
30. Bolger AM, Lohse M, Usadel B. Trimmomatic: a flexible trimmer for Illumina sequence data. *Bioinformatics* 2014;30:2114–2120.
31. Wingett SW, Andrews S. FastQ Screen: a tool for multi-genome mapping and quality control. *F1000Res* 2018;7:1338.
32. Bankevich A, Nurk S, Antipov D, Gurevich AA, Dvorkin M, et al. SPAdes: a new genome assembly algorithm and its applications to single-cell sequencing. *J Comput Biol* 2012;19:455–477.
33. Seemann T. Prokka: rapid prokaryotic genome annotation. *Bioinformatics* 2014;30:2068–2069.
34. Gurevich A, Saveliev V, Vyahni N, Tesler G. QUAST: quality assessment tool for genome assemblies. *Bioinformatics* 2013;29:1072–1075.
35. Viale AM, Evans BA. Microevolution in the major outer membrane protein OmpA of *Acinetobacter baumannii*. *Microb Genom* 2020;6:e000381.
36. Page AJ, Cummins CA, Hunt M, Wong VK, Reuter S, et al. Roary: rapid large-scale prokaryote pan genome analysis. *Bioinformatics* 2015;31:3691–3693.
37. Price MN, Dehal PS, Arkin AP. FastTree 2 – approximately maximum-likelihood trees for large alignments. *PLoS One* 2010;5:e9490.
38. Jironkin A, Al-Shahib A, Painset A, Underwood A, Kapatai G, et al. PHEnix 1.3 ed; 2017.
39. Dallman T, Ashton P, Schafer U, Jironkin A, Painset A, et al. SnapperDB: a database solution for routine sequencing analysis of bacterial isolates. *Bioinformatics* 2018;34:3028–3029.
40. Croucher NJ, Page AJ, Connor TR, Delaney AJ, Keane JA, et al. Rapid phylogenetic analysis of large samples of recombinant bacterial whole genome sequences using Gubbins. *Nucleic Acids Res* 2015;43:e15.
41. Larsen MV, Cosentino S, Rasmussen S, Friis C, Hasman H, et al. Multilocus sequence typing of total-genome-sequenced bacteria. *J Clin Microbiol* 2012;50:1355–1361.
42. Hunt M, Mather AE, Sánchez-Busó L, Page AJ, Parkhill J, et al. ARIBA: rapid antimicrobial resistance genotyping directly from sequencing reads. *Microb Genom* 2017;3:e000131.
43. McArthur AG, Waglechner N, Nizam F, Yan A, Azad MA, et al. The Comprehensive Antibiotic Resistance Database. *Antimicrob Agents Chemother* 2013;57:3348–3357.
44. Inouye M, Dashnow H, Raven L-A, Schultz MB, Pope BJ, et al. SRST2: rapid genomic surveillance for public health and hospital microbiology labs. *Genome Med* 2014;6:11.
45. Abudahab K, Prada JM, Yang Z, Bentley SD, Croucher NJ, et al. PANINI: pangene neighbour identification for bacterial populations. *Microb Genom* 2019;5:e000220.
46. Jones P, Binns D, Chang H-Y, Fraser M, Li W, et al. InterProScan 5: genome-scale protein function classification. *Bioinformatics* 2014;30:1236–1240.
47. Söding J, Biegert A, Lupas AN. The HHpred interactive server for protein homology detection and structure prediction. *Nucleic Acids Res* 2005;33:W244–W248.
48. Lowe TM, Chan PP. tRNAscan-SE On-line: integrating search and context for analysis of transfer RNA genes. *Nucleic Acids Res* 2016;44:W54–W57.
49. Sievers F, Wilm A, Dineen D, Gibson TJ, Karplus K, et al. Fast, scalable generation of high-quality protein multiple sequence alignments using Clustal Omega. *Mol Syst Biol* 2011;7:539.
50. Nguyen LT, Schmidt HA, von Haeseler A, Minh BQ. IQ-TREE: a fast and effective stochastic algorithm for estimating maximum-likelihood phylogenies. *Mol Biol Evol* 2015;32:268–274.
51. Kalyaanamoorthy S, Minh BQ, Wong TKF, von Haeseler A, Jermiin LS. ModelFinder: fast model selection for accurate phylogenetic estimates. *Nat Methods* 2017;14:587–589.
52. Hoang DT, Chernomor O, von Haeseler A, Minh BQ, Vinh LS. UFBoot2: improving the ultrafast bootstrap approximation. *Mol Biol Evol* 2018;35:518–522.
53. Okonechnikov K, Conesa A, García-Alcalde F. Qualimap 2: advanced multi-sample quality control for high-throughput sequencing data. *Bioinformatics* 2016;32:292–294.
54. Héritier C, Poirel L, Nordmann P. Cephalosporinase over-expression resulting from insertion of ISAbal1 in *Acinetobacter baumannii*. *Clin Microbiol Infect* 2006;12:123–130.

55. Woodford N, Ellington MJ, Coelho JM, Turton JF, Ward ME, et al. Multiplex PCR for genes encoding prevalent OXA carbapenemases in *Acinetobacter* spp. *Int J Antimicrob Agents* 2006;27:351–353.
56. Sambrook J, Russell DW. Extraction of bacteriophage λ DNA from large-scale cultures using proteinase K and SDS. *CSH Protoc* 2006;2006:pdb.prot3972.
57. Li H. Aligning sequence reads, clone sequences and assembly contigs with BWA-MEM. *arXiv* 2013;1303.3997.
58. Tomaszek F, Higgins PG, Stefanik D, Wisplinghoff H, Seifert H. Head-to-head comparison of two multi-locus sequence typing (MLST) schemes for characterization of *Acinetobacter baumannii* outbreak and sporadic isolates. *PLoS One* 2016;11:e0153014.
59. Zander E, Nemeč A, Seifert H, Higgins PG. Association between β -lactamase-encoding bla(OXA-51) variants and DiversiLab rep-PCR-based typing of *Acinetobacter baumannii* isolates. *J Clin Microbiol* 2012;50:1900–1904.
60. Poirel L, Bonnin RA, Boulanger A, Schrenzel J, Kaase M, et al. Tn125-related acquisition of blaNDM-like genes in *Acinetobacter baumannii*. *Antimicrob Agents Chemother* 2012;56:1087–1089.
61. Bonnin RA, Poirel L, Naas T, Pirs M, Seme K, et al. Dissemination of New Delhi metallo- β -lactamase-1-producing *Acinetobacter baumannii* in Europe. *Clin Microbiol Infect* 2012;18:E362–E365.
62. Corvec S, Poirel L, Naas T, Drugeon H, Nordmann P. Genetics and expression of the carbapenem-hydrolyzing oxacillinase gene blaOXA-23 in *Acinetobacter baumannii*. *Antimicrob Agents Chemother* 2007;51:1530–1533.
63. Gallagher LA, Ramage E, Weiss EJ, Radey M, Hayden HS, et al. Resources for genetic and genomic analysis of emerging pathogen *Acinetobacter baumannii*. *J Bacteriol* 2015;197:2027–2035.
64. Casjens SR, Grose JH. Contributions of P2- and P22-like prophages to understanding the enormous diversity and abundance of tailed bacteriophages. *Virology* 2016;496:255–276.
65. Moraru C, Varsani A, Kropinski AM. VIRIDIC – a novel tool to calculate the intergenomic similarities of prokaryote-infecting viruses. *Viruses* 2020;12:1268.
66. Adriaenssens E. How to name and classify your phage: an informal guide. *Viruses* 2017;9:E70.
67. Al-Hassan L, El Mehallawy H, Amyes SGB. Diversity in *Acinetobacter baumannii* isolates from paediatric cancer patients in Egypt. *Clin Microbiol Infect* 2013;19:1082–1088.
68. Karah N, Khalid F, Wai SN, Uhlin BE, Ahmad I. Molecular epidemiology and antimicrobial resistance features of *Acinetobacter baumannii* clinical isolates from Pakistan. *Ann Clin Microbiol Antimicrob* 2020;19:2.
69. Evans BA, Hamouda A, Towner KJ, Amyes SGB. OXA-51-like beta-lactamases and their association with particular epidemic lineages of *Acinetobacter baumannii*. *Clin Microbiol Infect* 2008;14:268–275.
70. Hamouda A, Evans BA, Towner KJ, Amyes SGB. Characterization of epidemiologically unrelated *Acinetobacter baumannii* isolates from four continents by use of multilocus sequence typing, pulsed-field gel electrophoresis, and sequence-based typing of bla(OXA-51-like) genes. *J Clin Microbiol* 2010;48:2476–2483.
71. Stietz MS, Ramírez MS, Vilacoba E, Merkier AK, Limansky AS, et al. *Acinetobacter baumannii* extensively drug resistant lineages in Buenos Aires hospitals differ from the international clones I-III. *Infect Genet Evol* 2013;14:294–301.
72. Graña-Miraglia L, Evans BA, López-Jácome LE, Hernández-Durán M, Colín-Castro CA, et al. Origin of OXA-23 variant OXA-239 from a recently emerged lineage of *Acinetobacter baumannii* international clone V. *mSphere* 2020;5:e00801-19.
73. Karah N, Jolley KA, Hall RM, Uhlin BE. Database for the ampC alleles in *Acinetobacter baumannii*. *PLoS One* 2017;12:e0176695.
74. Al-Agamy MH, Khalaf NG, Tawfik MM, Shibl AM, El Kholi A. Molecular characterization of carbapenem-insensitive *Acinetobacter baumannii* in Egypt. *Int J Infect Dis* 2014;22:49–54.
75. Kaase M, Nordmann P, Wichelhaus TA, Gatermann SG, Bonnin RA, et al. NDM-2 carbapenemase in *Acinetobacter baumannii* from Egypt. *J Antimicrob Chemother* 2011;66:1260–1262.
76. Benmahmod AB, Said HS, Ibrahim RH. Prevalence and mechanisms of carbapenem resistance among. *Microb Drug Resist* 2019;25:480–488.
77. Gomaa FAM, Helal ZH, Khan MI. High Prevalence of blaNDM-1, blaVIM, qacE, and qacE Δ 1 genes and their association with decreased susceptibility to antibiotics and common hospital biocides in clinical isolates of *Acinetobacter baumannii*. *Microorganisms* 2017;5:E18.
78. Adams-Haduch JM, Paterson DL, Sidjabat HE, Pasculle AW, Potoski BA, et al. Genetic basis of multidrug resistance in *Acinetobacter baumannii* clinical isolates at a tertiary medical center in Pennsylvania. *Antimicrob Agents Chemother* 2008;52:3837–3843.
79. Colomer-Lluch M, Imamovic L, Jofre J, Muniesa M. Bacteriophages carrying antibiotic resistance genes in fecal waste from cattle, pigs, and poultry. *Antimicrob Agents Chemother* 2011;55:4908–4911.
80. Quirós P, Colomer-Lluch M, Martínez-Castillo A, Miró E, Argente M, et al. Antibiotic resistance genes in the bacteriophage DNA fraction of human fecal samples. *Antimicrob Agents Chemother* 2014;58:606–609.
81. Gómez-Gómez C, Blanco-Picazo P, Brown-Jaque M, Quirós P, Rodríguez-Rubio L, et al. Infectious phage particles packaging antibiotic resistance genes found in meat products and chicken feces. *Sci Rep* 2019;9:13281.
82. Enault F, Briet A, Bouteille L, Roux S, Sullivan MB, et al. Phages rarely encode antibiotic resistance genes: a cautionary tale for virome analyses. *ISME J* 2017;11:237–247.
83. Touchon M, Cury J, Yoon E-J, Krizova L, Cerqueira GC, et al. The genomic diversification of the whole *Acinetobacter* genus: origins, mechanisms, and consequences. *Genome Biol Evol* 2014;6:2866–2882.
84. Costa AR, Monteiro R, Azeredo J. Genomic analysis of *Acinetobacter baumannii* prophages reveals remarkable diversity and suggests profound impact on bacterial virulence and fitness. *Sci Rep* 2018;8:15346.
85. López-Leal G, Santamaria RI, Cevallos MÁ, Gonzalez V, Castillo-Ramírez S. Prophages encode antibiotic resistance genes in *Acinetobacter baumannii*. *Microb Drug Resist* 2020;26:1275–1277.
86. Wachino JI, Jin W, Kimura K, Arakawa Y. Intercellular transfer of chromosomal antimicrobial resistance genes between *Acinetobacter baumannii* strains mediated by prophages. *Antimicrob Agents Chemother* 2019;63:e00334-19.
87. Kenyon JJ, Arbatsky NP, Sheinder MM, Popova AV, Dmitrenok AS, et al. The K46 and K5 capsular polysaccharides produced by *Acinetobacter baumannii* NIPH 329 and SDF have related structures and the side-chain non-ulonosonic acids are 4-O-acetylated by phage-encoded O-acetyltransferases. *PLoS One* 2019;14:e0218461.
88. Girlich D, Bonnin RA, Bogaerts P, De Laveleye M, Huang DT, et al. Chromosomal amplification of the blaOXA-58 carbapenemase gene in a *Proteus mirabilis* clinical isolate. *Antimicrob Agents Chemother* 2017;61:e01697-16.
89. Chan AP, Sutton G, DePew J, Krishnakumar R, Choi Y, et al. A novel method of consensus pan-chromosome assembly and large-scale comparative analysis reveal the highly flexible pan-genome of *Acinetobacter baumannii*. *Genome Biol* 2015;16:143.
90. Wibberg D, Salto IP, Eikmeyer FG, Maus I, Winkler A, et al. Complete genome sequencing of *Acinetobacter baumannii* strain K50 discloses the large conjugative plasmid pK50a encoding carbapenemase OXA-23 and extended-spectrum β -lactamase GES-11. *Antimicrob Agents Chemother* 2018;62:e00212-18.
91. Rafei R, Pailhoriès H, Hamze M, Eveillard M, Mallat H, et al. Molecular epidemiology of *Acinetobacter baumannii* in different hospitals in Tripoli, Lebanon using bla(OXA-51-like) sequence based typing. *BMC Microbiol* 2015;15:103.
92. Hammerum AM, Hansen F, Skov MN, Stegger M, Andersen PS, et al. Investigation of a possible outbreak of carbapenem-resistant *Acinetobacter baumannii* in Odense, Denmark using PFGE,

- MLST and whole-genome-based SNPs. *J Antimicrob Chemother* 2015;70:1965–1968.
93. Vali L, Dashti K, Opazo-Capurro AF, Dashti AA, Al Obaid K, et al. Diversity of multi-drug resistant *Acinetobacter baumannii* population in a major hospital in Kuwait. *Front Microbiol* 2015;6:743.
 94. Castanheira M, Costello SE, Woosley LN, Deshpande LM, Davies TA, et al. Evaluation of clonality and carbapenem resistance mechanisms among *Acinetobacter baumannii*-*Acinetobacter calcoaceticus* complex and *Enterobacteriaceae* isolates collected in European and Mediterranean countries and detection of two novel β -lactamases, GES-22 and VIM-35. *Antimicrob Agents Chemother* 2014;58:7358–7366.
 95. Bonnin RA, Rotimi VO, Al Hubail M, Gasiorowski E, Al Sweih N, et al. Wide dissemination of GES-type carbapenemases in *Acinetobacter baumannii* isolates in Kuwait. *Antimicrob Agents Chemother* 2013;57:183–188.
 96. Mabrouk A, Grosso F, Botelho J, Achour W, Ben Hassen A, et al. GES-14-producing *Acinetobacter baumannii* isolates in a neonatal intensive care unit in Tunisia are associated with a typical Middle East clone and a transferable plasmid. *Antimicrob Agents Chemother* 2017;61:e00142-17.
 97. Wang X, Qiao F, Yu R, Gao Y, Zong Z. Clonal diversity of *Acinetobacter baumannii* clinical isolates revealed by a snapshot study. *BMC Microbiol* 2013;13:234.
 98. Sullivan MJ, Petty NK, Beatson SA. Easyfig: a genome comparison visualizer. *Bioinformatics* 2011;27:1009–1010.

Five reasons to publish your next article with a Microbiology Society journal

1. The Microbiology Society is a not-for-profit organization.
2. We offer fast and rigorous peer review – average time to first decision is 4–6 weeks.
3. Our journals have a global readership with subscriptions held in research institutions around the world.
4. 80% of our authors rate our submission process as 'excellent' or 'very good'.
5. Your article will be published on an interactive journal platform with advanced metrics.

Find out more and submit your article at microbiologyresearch.org.