

URBAN — ID

www.Urban-ID.co.uk

A Partnership Approach to Carbon Neutral Bristol 2050

Emily Prestwood (UWE)

with Ges Rosenberg (UoB), Ian Townsend (BGCP) and James Longhurst (UWE)



The Urban Transformation Challenge

Cities and Climate Change Cities need to implement new sustainable development plans to mitigate, adapt and respond to climate change.

Urban Emissions, Impacts, and Vulnerabilities Cities are some of the largest contributors to global GHG emissions, and experience some of the worst effects of climate change.

Solutions for the Transition to Low Carbon and Climate Resilient Cities Sustainable development strategies including disruptive technology, urban infrastructure and design, and institutional innovation need to be transformative.

Enabling Transformative Climate Action in Cities City climate action takes place in the context of diverse social, environmental, economic, and developmental realities.

From Cities IPCC.org

URBAN — ID

The Bristol Urban Area (UK)



URBAN — ID

Bristol Urban Living Partnership (ULP)

One of five winning bids co-produced by:

- Bristol Green Capital Partnership
- Bristol Health Partners
- Bristol City Council
- South Gloucestershire County Council
- University of Bristol
- University of the West of England (UWE Bristol)



Urban ID (Integrated Diagnostic)

Project aim:

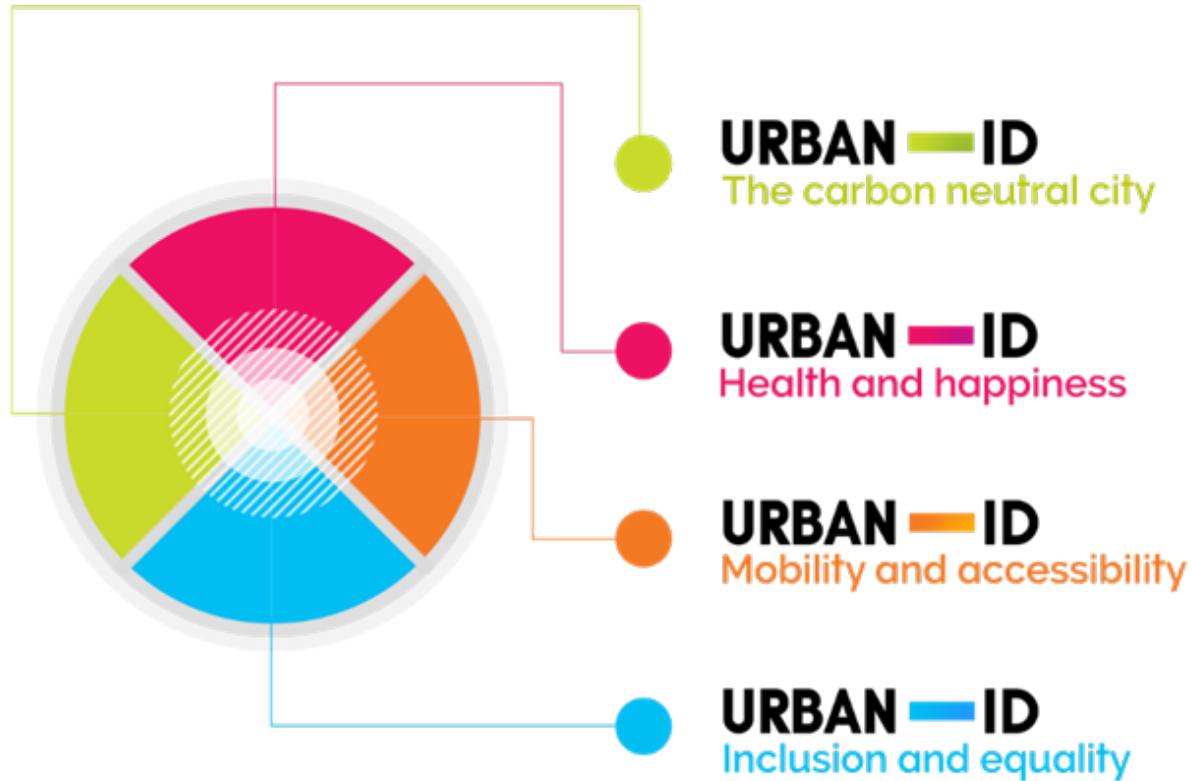
To develop a novel, transdisciplinary integrated diagnostics framework and methods to address several key urban challenges.



This framework has been applied to diagnose where and how Bristol struggles to optimize collaborative social practices by bringing together multiple viewpoints from across the Bristol Urban Area

URBAN — ID

Challenge themes



The Urban ID framework has been used to diagnose complex problems across four ‘Challenge Themes’ using:

- a systematic analysis approach, and
- A developing transdisciplinary framework

URBAN — ID

Bristol Green Capital Partnership: City Environmental Sustainability Community

- The Partnership is the city's independent environmental sustainability network
- It has 850 member organisations from across the private, public, voluntary and third sectors.
- Its members are based across the city, the Bristol urban area and the wider region as well as beyond.



Bristol Green Capital Partnership: City Environmental Sustainability Community

The Partnership's **vision** is a sustainable city with a high quality of life for all.

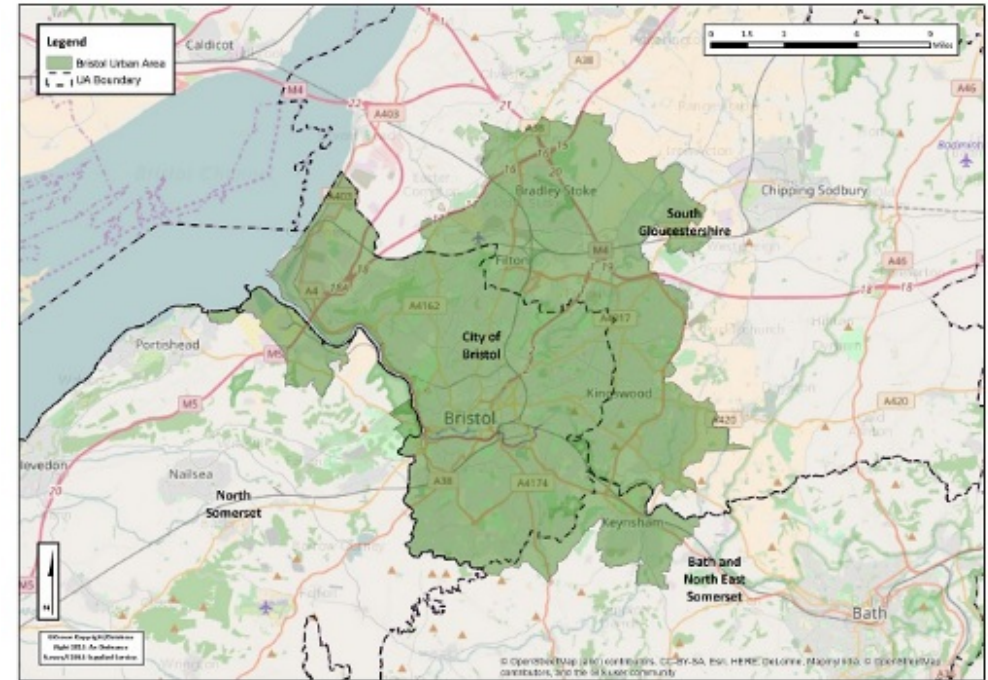
Its **mission** is to develop, support and promote environmental sustainability throughout Bristol and wider region and share learnings and best practice beyond Bristol the city, to the rest of the West of England, the UK and also globally.



URBAN — ID

Diagnostic tools and methods: Systems thinking

- Applying a systems-based problem structuring approach
- Developing an identification of interdependencies of risks and opportunities for collaboration and co-benefits
- Developing greater understanding of how bottom-up and top-down approaches merge



Diagnostic tools and methods: Co-production/co-creation/co-design

- More equitable and inclusive way of generating knowledge and insight
- Possibility of better understanding of stakeholder needs
- Develop more resilient solutions via community engagement and stewardship
- Develop a common language between stakeholders and communities



Sustainability objectives & partnerships

From the Reference Framework for Sustainable Cities

Objective 11: **Strengthen governance in partnership:** integrated, holistic, sustainable urban approach and local governance cooperating with experts, civil society and the private sector.

Objective 12: **Facilitate capacity building and networking:** through an integrated, longer term approach innovative partnerships.

1) Representative of the Bristol Urban Area's organisations and communities



URBAN — ID

2) Able to identify, develop and support strategies and actions for Carbon Neutral Bristol 2050



URBAN — ID

3) A non-political partnership/network in the area's environmental and climate change governance



URBAN — ID

4) A promoter of the BGCP community's knowledge and opinions in local decision making



URBAN — ID

5) A facilitator of knowledge sharing and education in the Bristol Urban Area



URBAN — ID

The Partnership	What works	What doesn't work
Representative of the Bristol Urban Area	Public, private and third sector members. Green & Black Ambassadors Project	White, middle-class and older audience over-represented
Able to identify, develop and support strategies and actions	Broad understanding of environmental issues and central team with influencing role	Too much talking, instead of action. Lack of funding
A non-political partnership /network in the area	Committed to long term visions and innovative action	Not political enough. Need to have a louder voice
A promoter of the Partnership in local decision making	Actively engaged with regional and city strategies, including One City Plan	Conversations between different parts of the network can become siloed
A facilitator of knowledge sharing and education	Skills bridge, Urban ID, and close relationship with universities	Lack of funding

The Partnership	What works	What doesn't work
Representative of the Bristol Urban Area	Public, private and third sector members. Green & Black Ambassadors Project	White, middle-class and older audience over-represented
Able to identify, develop and support strategies and actions	Broad understanding of environmental issues and central team with influencing role	Too much talking, instead of action. Lack of funding
A non-political partnership /network in the area	Committed to long term visions and innovative action	Not political enough. Need to have a louder voice
A promoter of the Partnership in local decision making	Actively engaged with regional and city strategies, including One City Plan	Conversations between different parts of the network can become siloed
A facilitator of knowledge sharing and education	Skills bridge, Urban ID, and close relationship with universities	Lack of funding

Emerging metrics for building a successful city environmental partnership:

- 1) Leadership
- 2) Boundary spanning
- 3) Diverse network with reach
- 4) Legitimacy/recognition
- 5) Assets/funding
- 6) Organising power
- 7) Agency and belonging of members
- 8) Links with learning and research
- 9) Cross-sectoral/theme collaborations



Next stage: Linking the work of the partnership to the sustainable development goals

Emerging metrics for building a successful city environmental partnership:

- 1) Leadership
- 2) Boundary spanning
- 3) Diverse network with reach
- 4) Legitimacy/recognition
- 5) Assets/funding
- 6) Organising power
- 7) Agency and belonging of members
- 8) Links with learning and research
- 9) Cross-sectoral/theme collaborations



Next stage: Linking the work of the partnership to the sustainable development goals

Thank you

Urban ID project: www.Urban-ID.co.uk

Bristol Green Capital Partnership: www.bristolgreencapital.org

emily.prestwood@uwe.ac.uk @prestwoodemily

ges.rosenberg@bristol.ac.uk @GesRosenberg

ian@bristolgreencapital.org or www.linkedin.com/in/townsendian/

james.longhurst@uwe.ac.uk or www.linkedin.com/in/james-longhurst-0aa74526/

URBAN — ID