



ClairCity received funding for the European Union's Horizon 2020 research and innovation programme under grant No. 689289.



WeCount has received funding from the European Union's Horizon 2020 research and innovation programme under grant agreement No. 872743.



From science communication to action – engaging with society's change makers

Dr Laura Fogg-Rogers, Senior Lecturer, UWE Bristol

@laurafoggrogers

<https://www.uwe.ac.uk/research/centres-and-groups/scu>



Climate and Ecological Emergency



<https://www.ipcc.ch/sr15/>

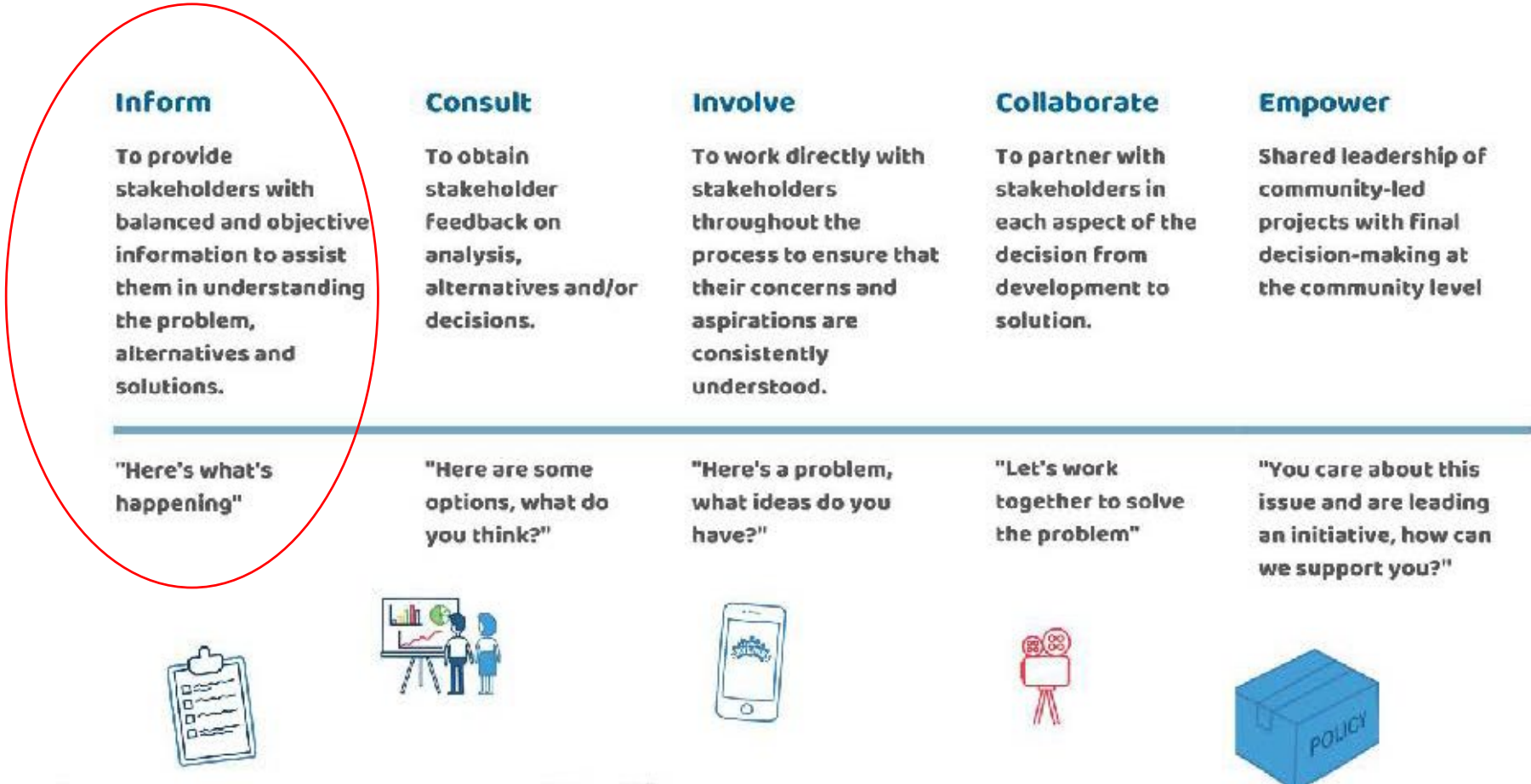
www.claircity.eu



Net Zero 2030

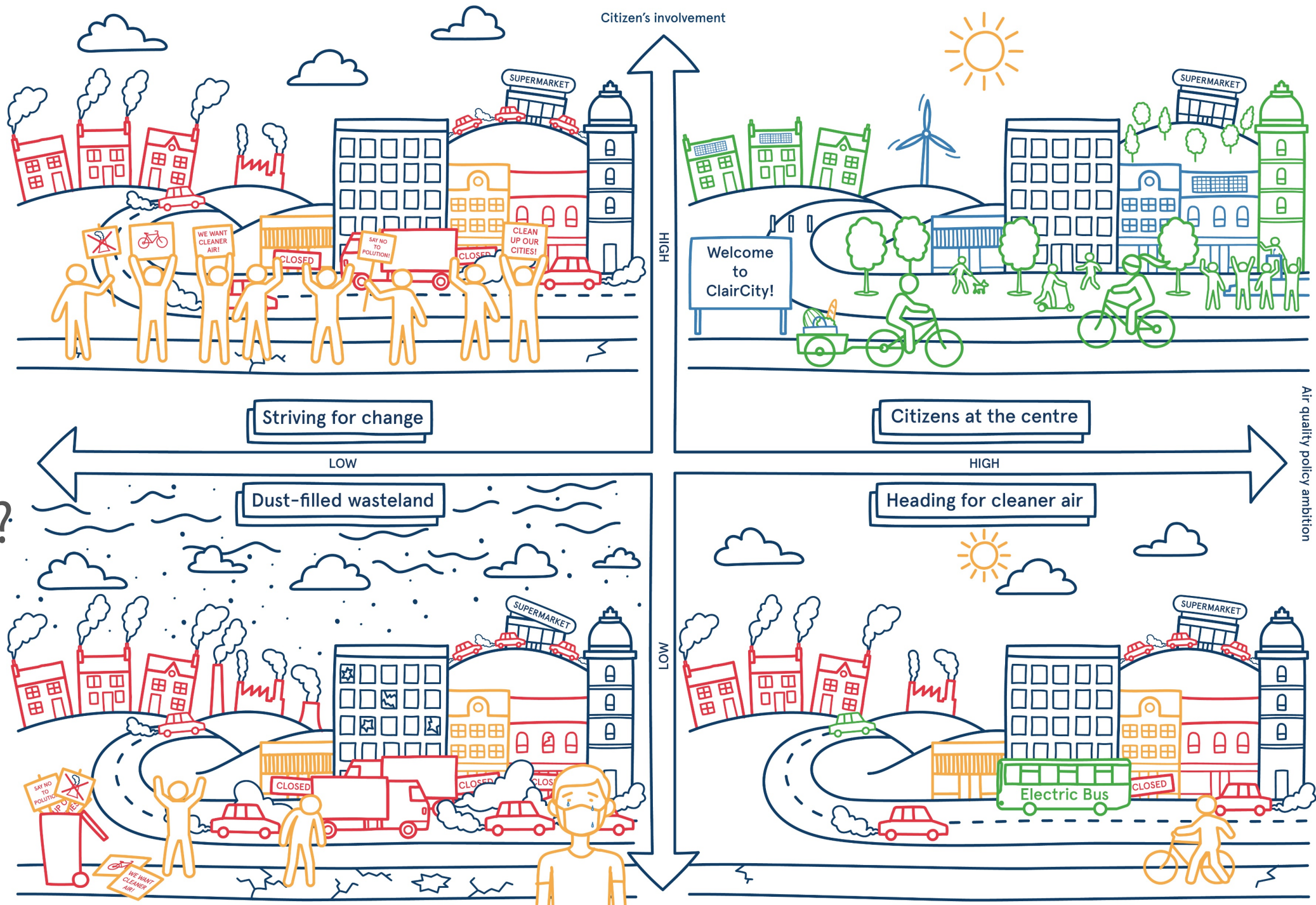


Where is science communication?



G. Stuart, "What is the Spectrum of Public Participation?," *Sustaining Community*, 2017.
<https://www.theguardian.com/commentisfree/2021/may/04/information-campaigns-brexit-covid-climate-crisis-cop26>

Which future do you want to help create?



Citizen-led air pollution reduction in cities

Everyday, air pollution and carbon emissions are produced by our commutes to work, by heating our homes, or through our daily lifestyles.

The ClairCity aim was to create a major shift in public understanding towards the causes of poor air quality, inviting citizens to give their opinions on air pollution and carbon reduction to shape the cities of the future (2016-2020).



WHAT IS AIR POLLUTION AND HOW DOES IT AFFECT US?

AIR POLLUTION



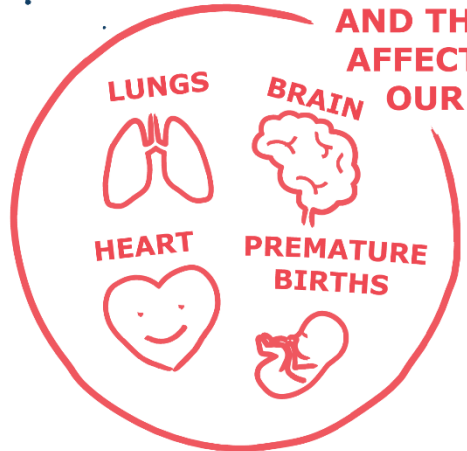
SOOT
DUST

PM_{2.5} PM₁₀

WE
BREATHE
IT IN



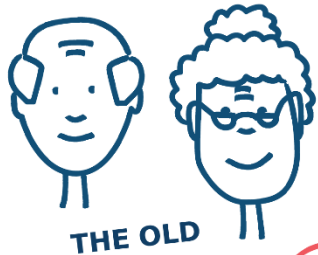
AND THIS
AFFECTS



WHO'S
AT
RISK

ALL OF US!

BUT ESPECIALLY...



THE OLD



THE
YOUNG

PEOPLE WITH
HEALTH
CONDITIONS



This project has received funding from the European Union's Horizon 2020 research and innovation programme under grant agreement No. 689289.



Inform

IT'S YOUR HEALTH

BREATHING POLLUTED AIR RAISES THE CHANCES OF HEART ATTACKS, STROKES, AND LUNG CANCER. IT MAKES RESPIRATORY CONDITIONS LIKE ASTHMA OR BRONCHITIS WORSE.



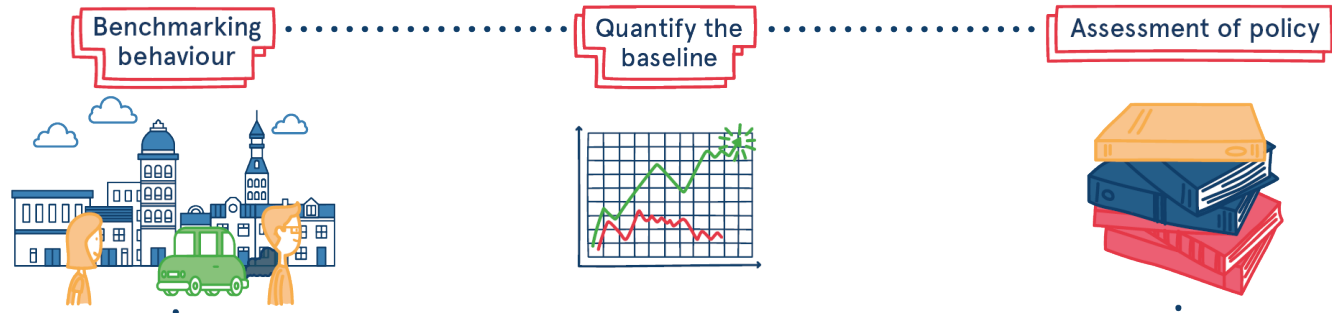
1 IN 8 DEATHS

AIR POLLUTION CAUSES ONE IN EVERY EIGHT PREMATURE DEATHS WORLDWIDE.

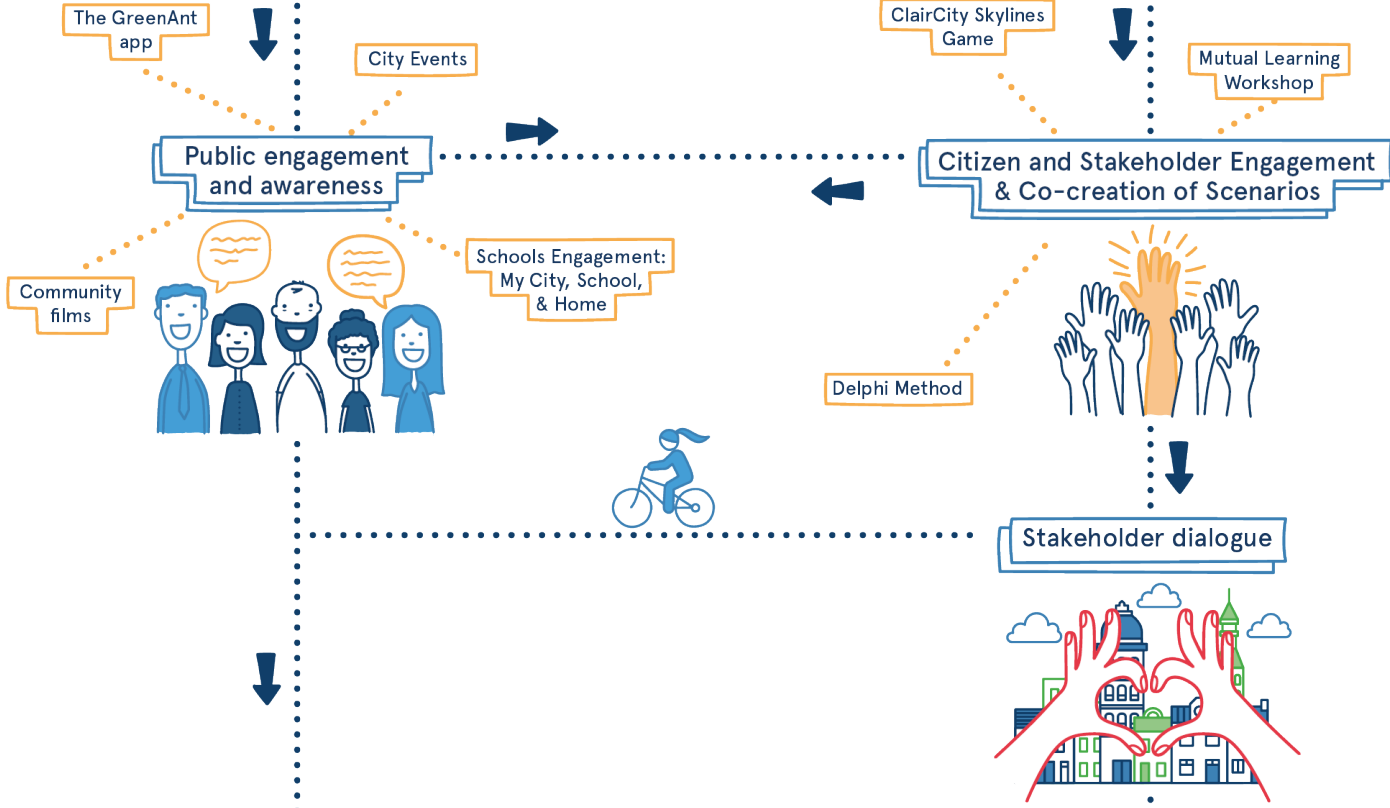


How the ClairCity process engages with a city & its citizens

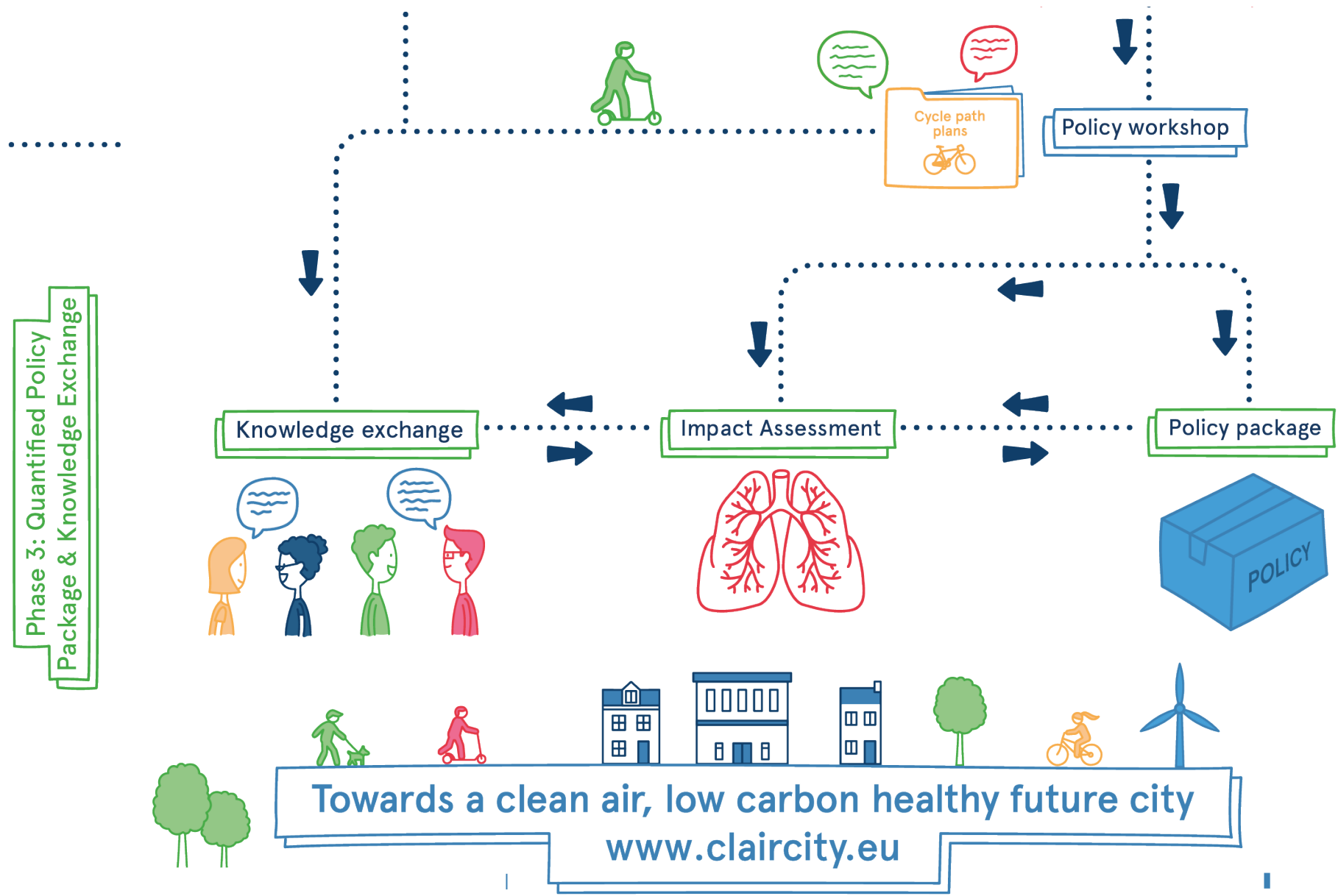
Phase 1: Establish the Baseline Evidence



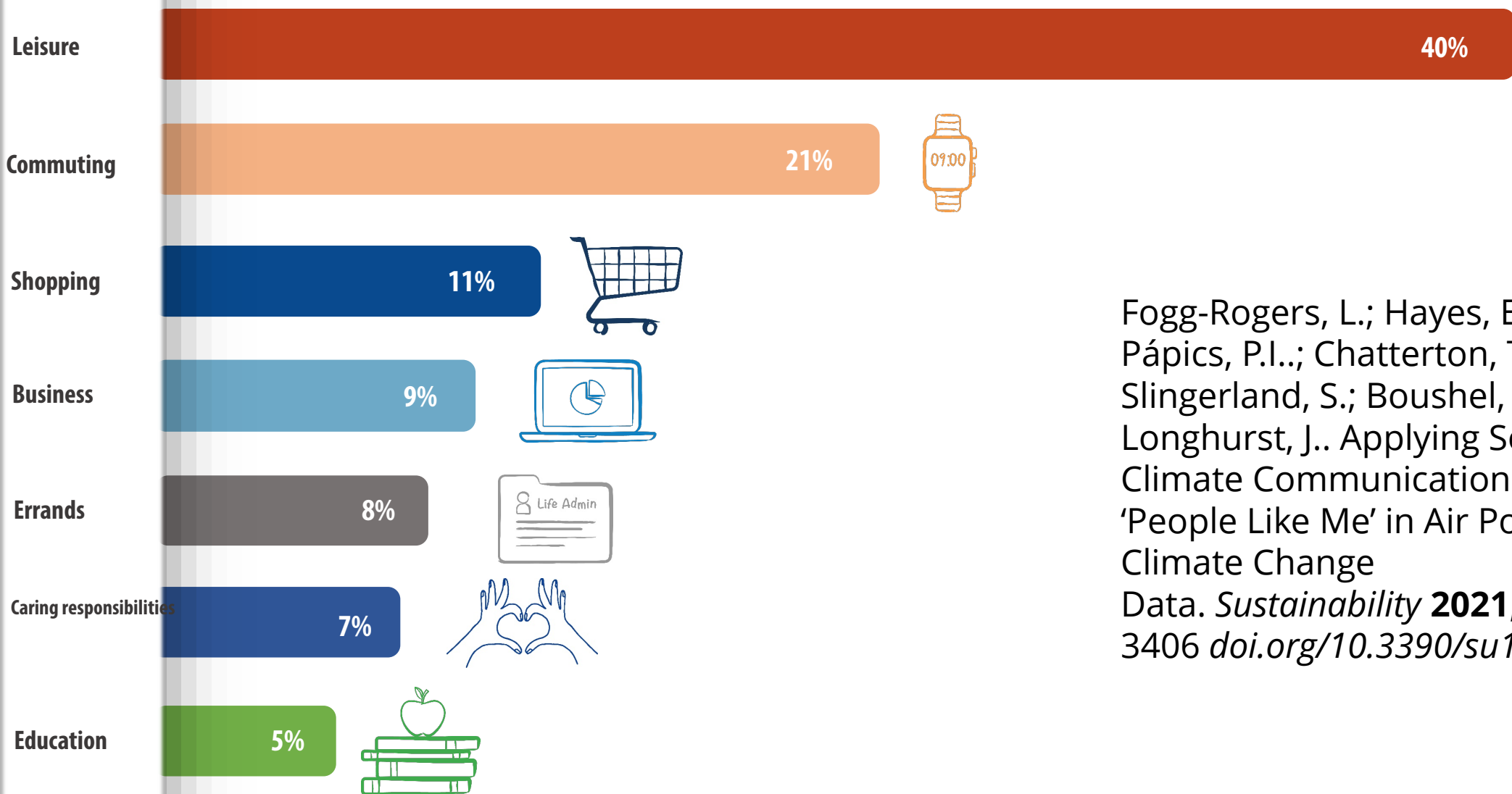
Phase 2: Citizen and Stakeholder Engagement & Co-creation of Scenarios



How the ClairCity process engages with a city & its citizens



Baseline reports e.g. why we travel... relative distance contribution of our travel activities in Bristol



Fogg-Rogers, L.; Hayes, E.; Vanherle, K.; Pápics, P.I.; Chatterton, T.; Barnes, J.; Slingerland, S.; Boushel, C.; Laggan, S.; Longhurst, J.. Applying Social Learning to Climate Communications—Visualising ‘People Like Me’ in Air Pollution and Climate Change
Data. *Sustainability* **2021**, 13(6) 3406 doi.org/10.3390/su13063406

*Data gathered in 2015 to show baseline behaviours (% rounded)

Relative % contribution

The seven segments in depth

Progressive
Activists



View



Backbone
Conservatives



View



Civic Pragmatists



View



Established Liberals



View



Disengaged
Battlers



View



Disengaged
Traditionalists



View



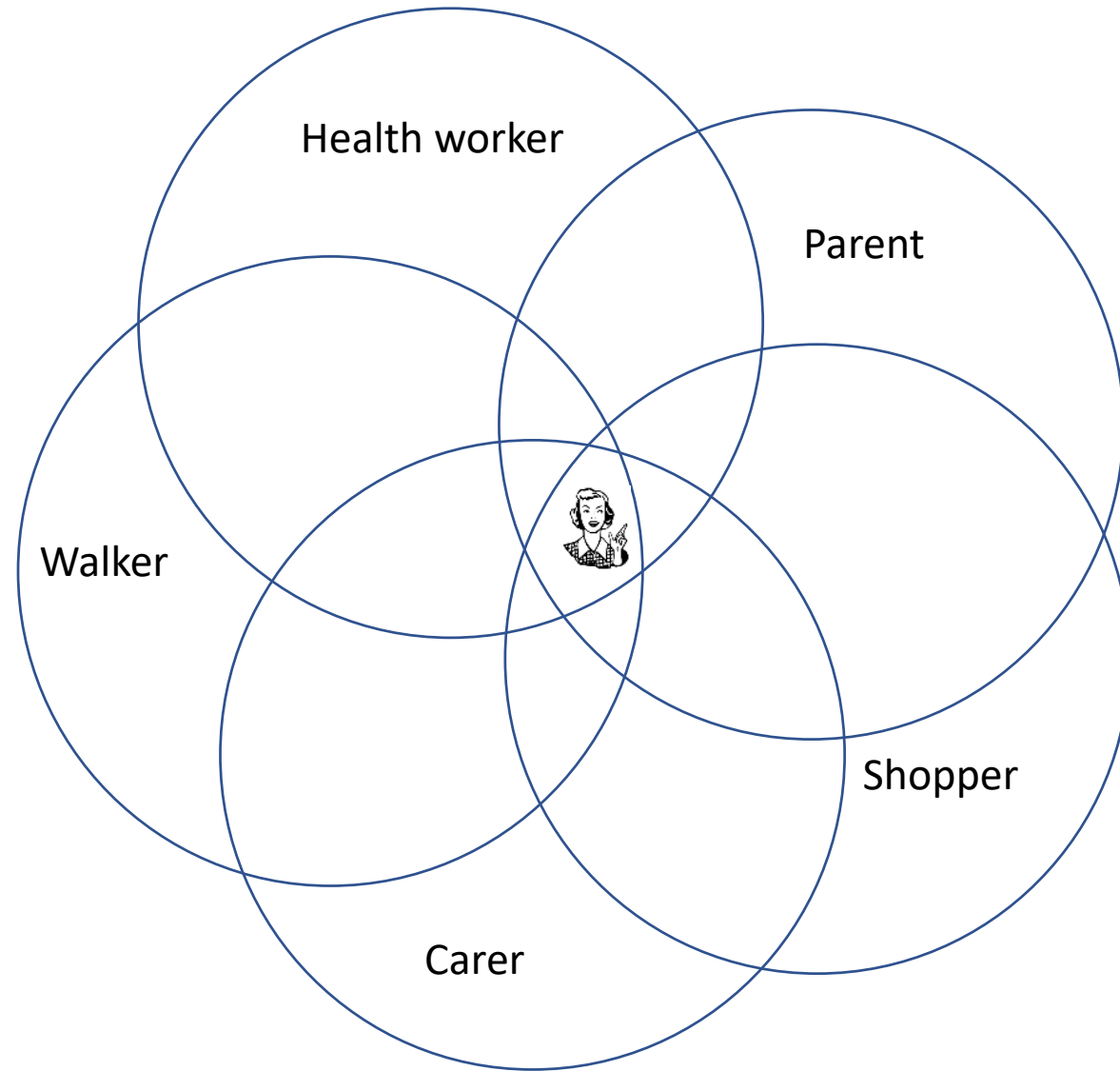
Loyal Nationals



View

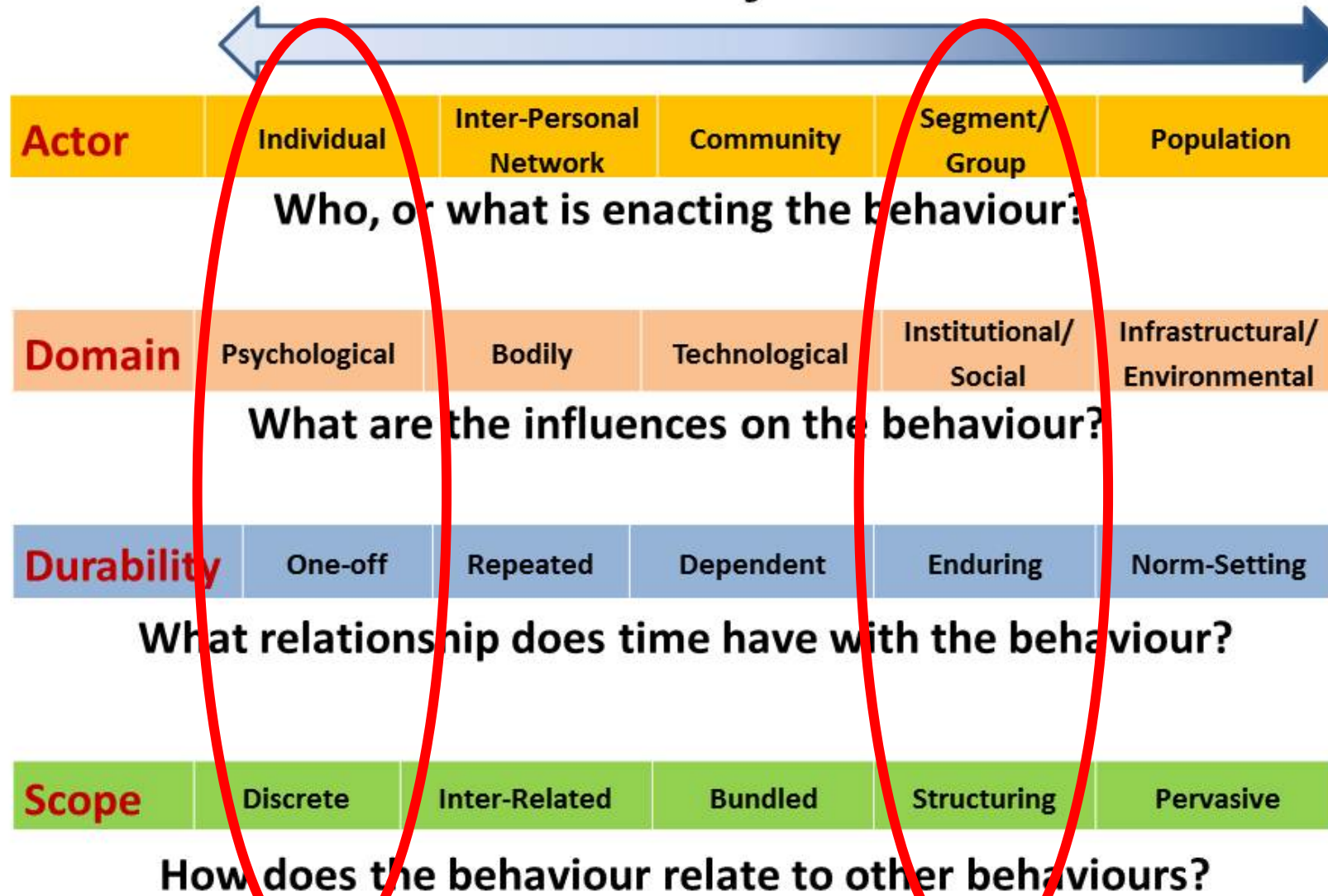


Social identity and social cognition = people like us

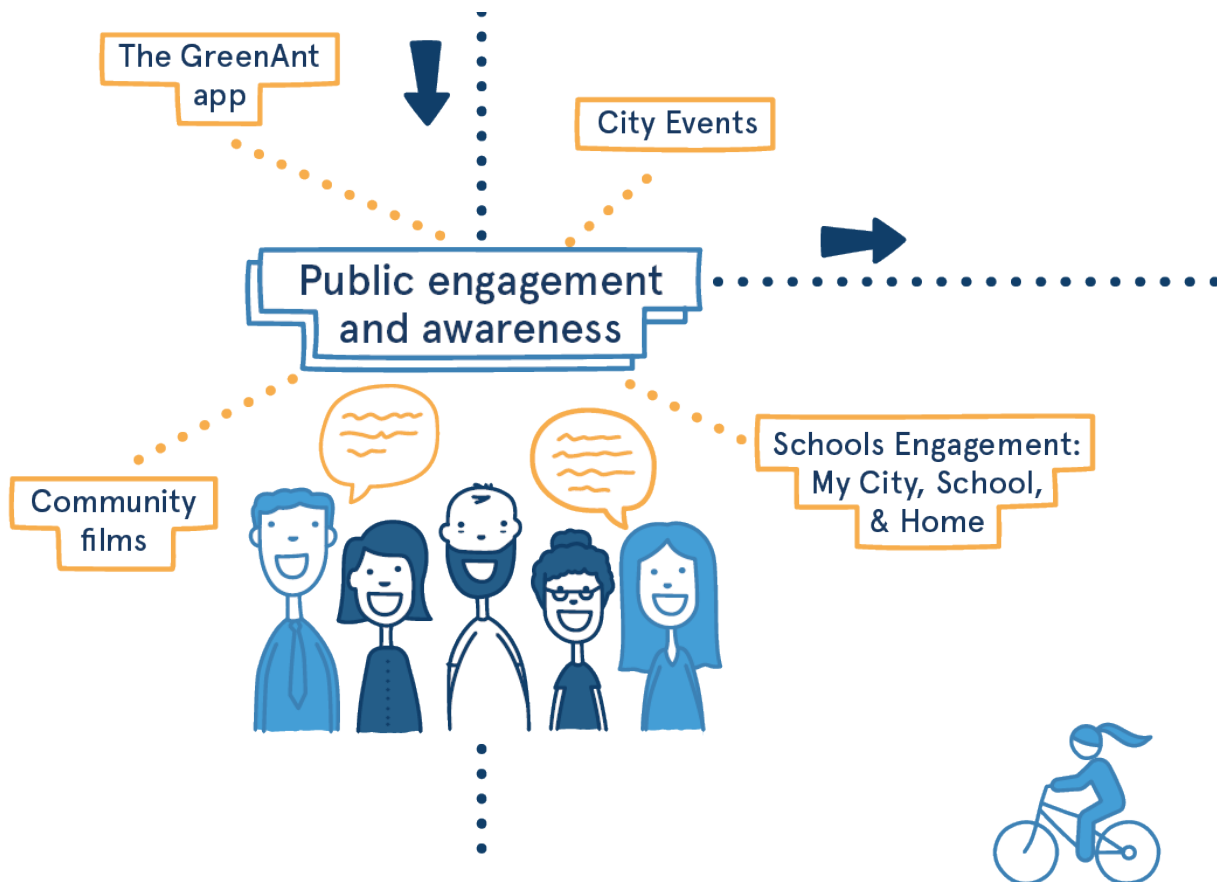


Fogg-Rogers, L.; Hayes, E.; Vanherle, K.; Pápics, P.I.; Chatterton, T.; Barnes, J.; Slingerland, S.; Boushel, C.; Laggan, S.; Longhurst, J.. Applying Social Learning to Climate Communications—Visualising ‘People Like Me’ in Air Pollution and Climate Change
Data. *Sustainability* **2021**, *13*(6)
3406 doi.org/10.3390/su13063406

4 Dimensions of Behaviour



Consult and Involve



Community films



Schools Engagement:



City Events

Consult and Involve

ClairCity Skylines



Delphi Method



ClairCity Skylines Game

Mutual Learning Workshop

Citizen and Stakeholder Engagement & Co-creation of Scenarios



Mutual Learning Workshop

Delphi Method





ClairCity results

818,736
citizens
involved across
6 cities and
regions

770,253
Twitter
impressions



5,801
YouTube
video views



1,418
Facebook
followers



33,678
Website
visitors



82
Policy makers
consulted



132
stakeholders
involved in Mutual
Learning Workshop



65
Older people
filmed



4887
citizens involved
in Delphi
process



8302
direct
engagements

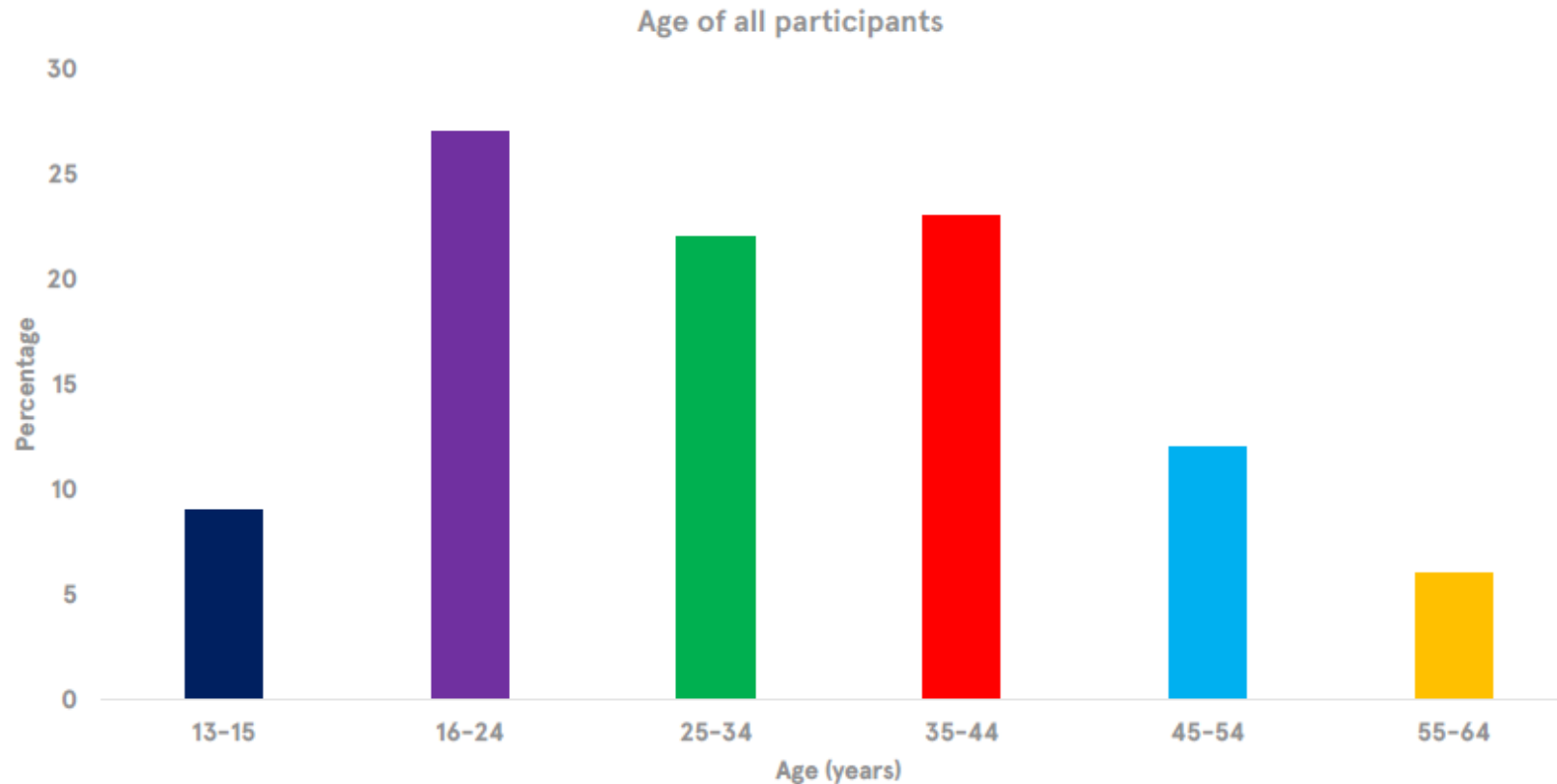


>1000
children engaged
in public events
and lessons

447
school children
engaged in My
School, My City,
My Home
competition

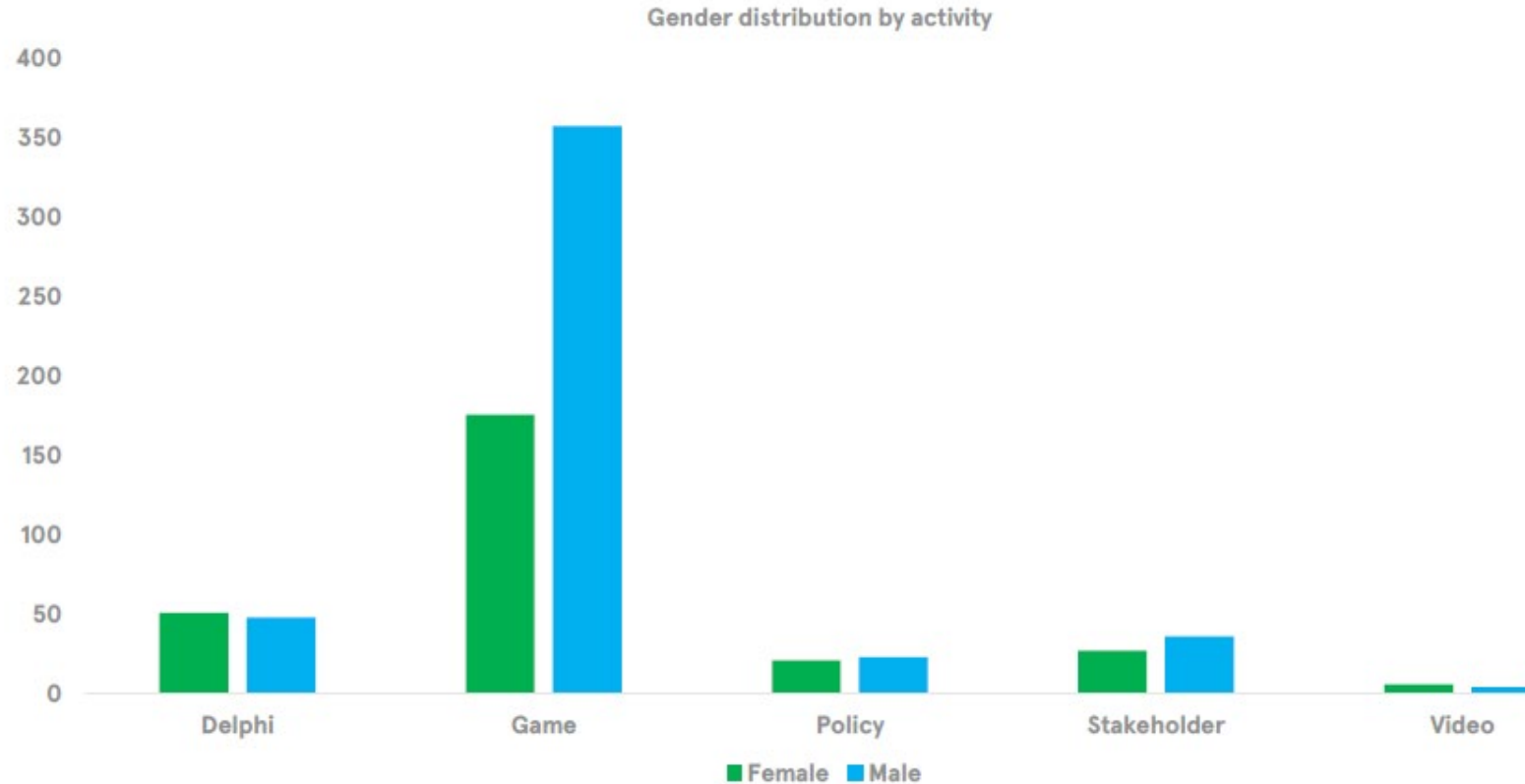


Different activities needed to appeal to different ages, genders, and communities










M. Sardo, S. Laggan, C. Boushel, and L. Fogg Rogers, "Citizen-led air pollution reduction in cities (ClairCity) Final evaluation report," 2020. <https://uwe-repository.worktribe.com/output/6017473/citizen-led-air-pollution-reduction-in-cities-claircity-final-evaluation-report>

Different activities needed to appeal to different ages, genders, and communities



M. Sardo, S. Laggan, C. Boushel, and L. Fogg Rogers, "Citizen-led air pollution reduction in cities (ClairCity) Final evaluation report," 2020. <https://uwe-repository.worktribe.com/output/6017473/citizen-led-air-pollution-reduction-in-cities-claircity-final-evaluation-report>

Different activities needed to appeal to different ages, genders, and communities

Demographics	Activities
62.5%  Men	74%  intend to change their behaviour
25%  16-24	98%  found policy workshop useful
81%  workshop participants older men	21%  knowledgeable before playing
	61%  found schools activities useful

Engagement Findings



- the more participants understanding had improved, the more likely they were to change their behaviour



- the more participants enjoyed the activity, the more their understanding of air quality improved



- the younger the participants, the more likely they were to say that they enjoyed the activity

M. Sardo, S. Laggan, C. Boushel, and L. Fogg Rogers, "Citizen-led air pollution reduction in cities (ClairCity) Final evaluation report," 2020. <https://uwe-repository.worktribe.com/output/6017473/citizen-led-air-pollution-reduction-in-cities-claircity-final-evaluation-report>

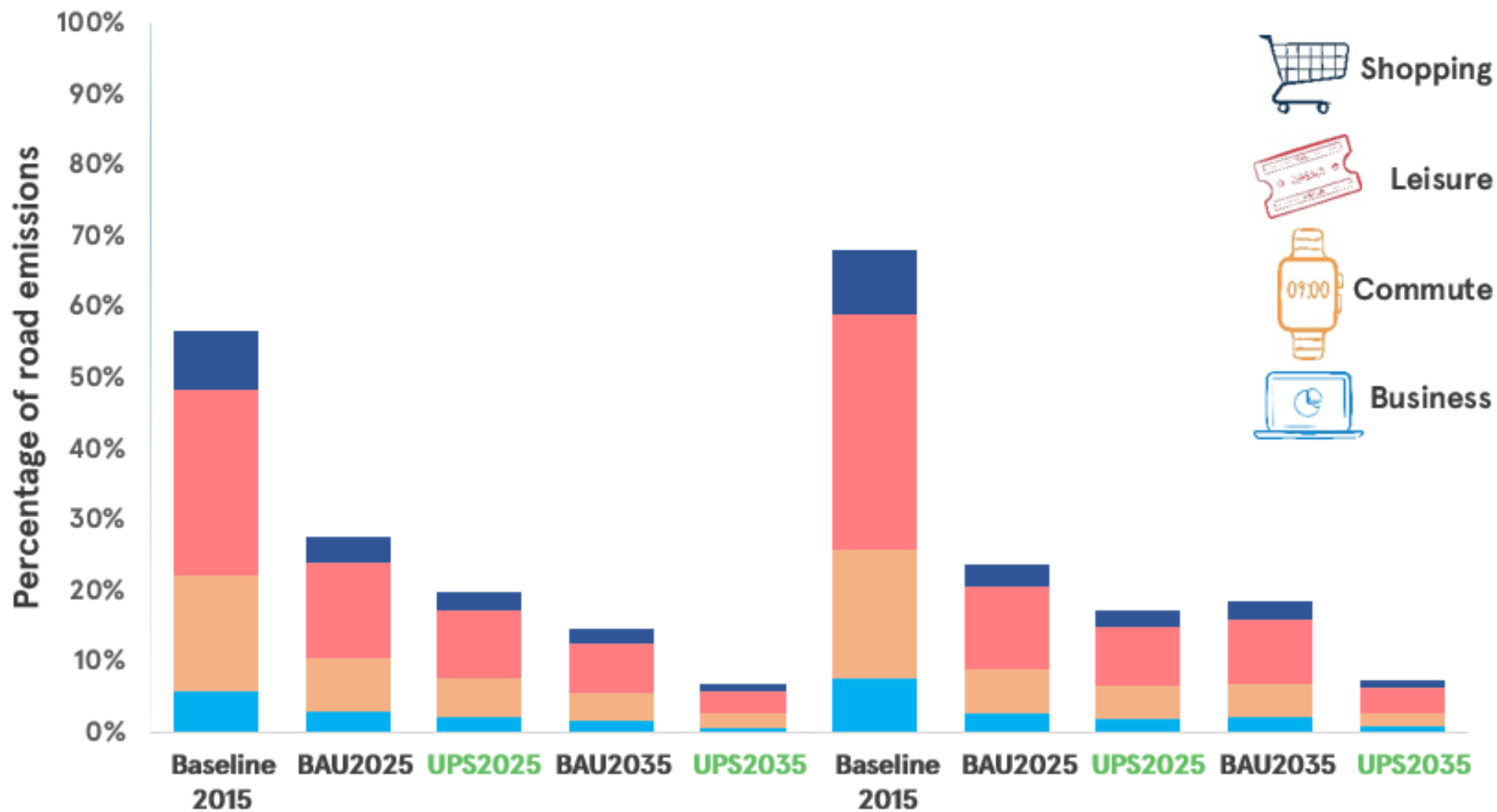
Collaborate – citizens want ambitious policies designed with their needs in mind

Bristol's top five Citizen-led clean air policies

- 1. Ban/phase out polluting vehicles**
- 2. Make buses greener and cleaner**
- 3. Make public transport more affordable**
- 4. Create alternatives to car use through better walking and cycling infrastructure**
- 5. Reduce vehicle road space and increase public transport space**



Road transport NOx and PM10 emissions scenarios by motive



Citizens were more ambitious than Business as Usual

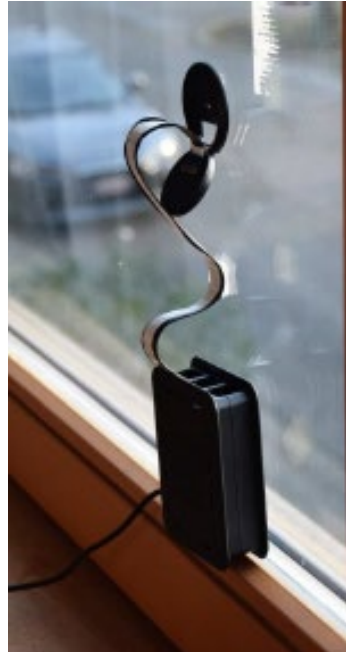
NOx and PM10 emissions by scenario and Motive

Empower

M. Sardo, L. Fogg-Rogers, S. Laggan, I. Vleugels, A. Bracke, and E. Franchois, “Are we on the same page? Making project engagement and evaluation work across European cities and cultures,” in *Citizen Science SDG Conference*, 2020.

What is WeCount?

- Road traffic and urban mobility is a hot topic with plenty opinionated and even militant citizens already engaged. Although the younger voice is often not heard.
- The aim is **work with citizens to quantify local road transport, produce new knowledge on local mobility, and co-create informed solutions to tackle various urban mobility challenges** such as speeding, rat-running, peak episodes, air pollution, active travel etc.
- The WeCount project will carry out five different pilot studies in six EU cities / regions:
 - Leuven, Belgium;
 - Madrid / Barcelona, Spain;
 - Ljubljana, Slovenia;
 - Dublin, Ireland; and
 - Cardiff, UK.



Community resources



www.claircity.eu/take-action/community-activator

@Claircity

@WecountH

www.claircity.eu/take-action/educator



<http://www.claircity.eu/take-action/science-communicator/>

www.claircity.eu



Community engagement

Inform

To provide stakeholders with balanced and objective information to assist them in understanding the problem, alternatives and solutions.

"Here's what's happening"



Consult

To obtain stakeholder feedback on analysis, alternatives and/or decisions.

"Here are some options, what do you think?"



Involve

To work directly with stakeholders throughout the process to ensure that their concerns and aspirations are consistently understood.

"Here's a problem, what ideas do you have?"



Collaborate

To partner with stakeholders in each aspect of the decision from development to solution.

"Let's work together to solve the problem"



Empower

Shared leadership of community-led projects with final decision-making at the community level

"You care about this issue and are leading an initiative, how can we support you?"

