



This project received funding for the European Union's Horizon 2020 research and innovation programme under grant No. 689289.

Citizen Engagement and Behaviour Modelling for Clean Air and Net Zero Carbon

Dr Laura Fogg-Rogers, UWE-Bristol

Eva Csobod, Dr Margarida Sardo, Kris Vanherle, Dr Vera Rodrigues, Dr Myriam Lopes, Dr Enda Hayes



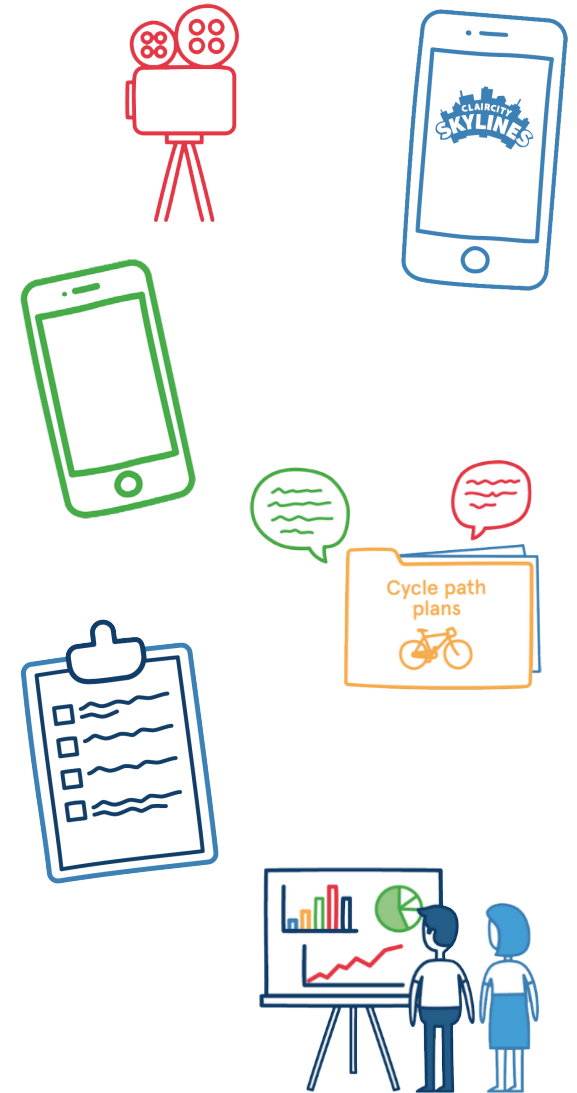
Citizens at
the Centre

www.claircity.eu



Intro

- The **primary objective** of the session is to introduce the ClairCity project (2016-2020) and discuss ways to model behaviour from a citizen perspective.
- Engagement **tools** and **modelling** were aimed at actively engaging city citizens and stakeholders to understand **air quality, carbon emissions and their health impact** in some European cities and regions.
- These approaches are being taken further in the WeCount project (2019-2021). We will discuss the specific **challenges and opportunities** that citizen inclusive modelling offers.



Climate and Ecological Emergency



Citizens at
the Centre

WHAT IS AIR POLLUTION AND HOW DOES IT AFFECT US?



IT'S YOUR HEALTH

BREATHING POLLUTED AIR RAISES THE CHANCES OF HEART ATTACKS, STROKES, AND LUNG CANCER. IT MAKES RESPIRATORY CONDITIONS LIKE ASTHMA OR BRONCHITIS WORSE.

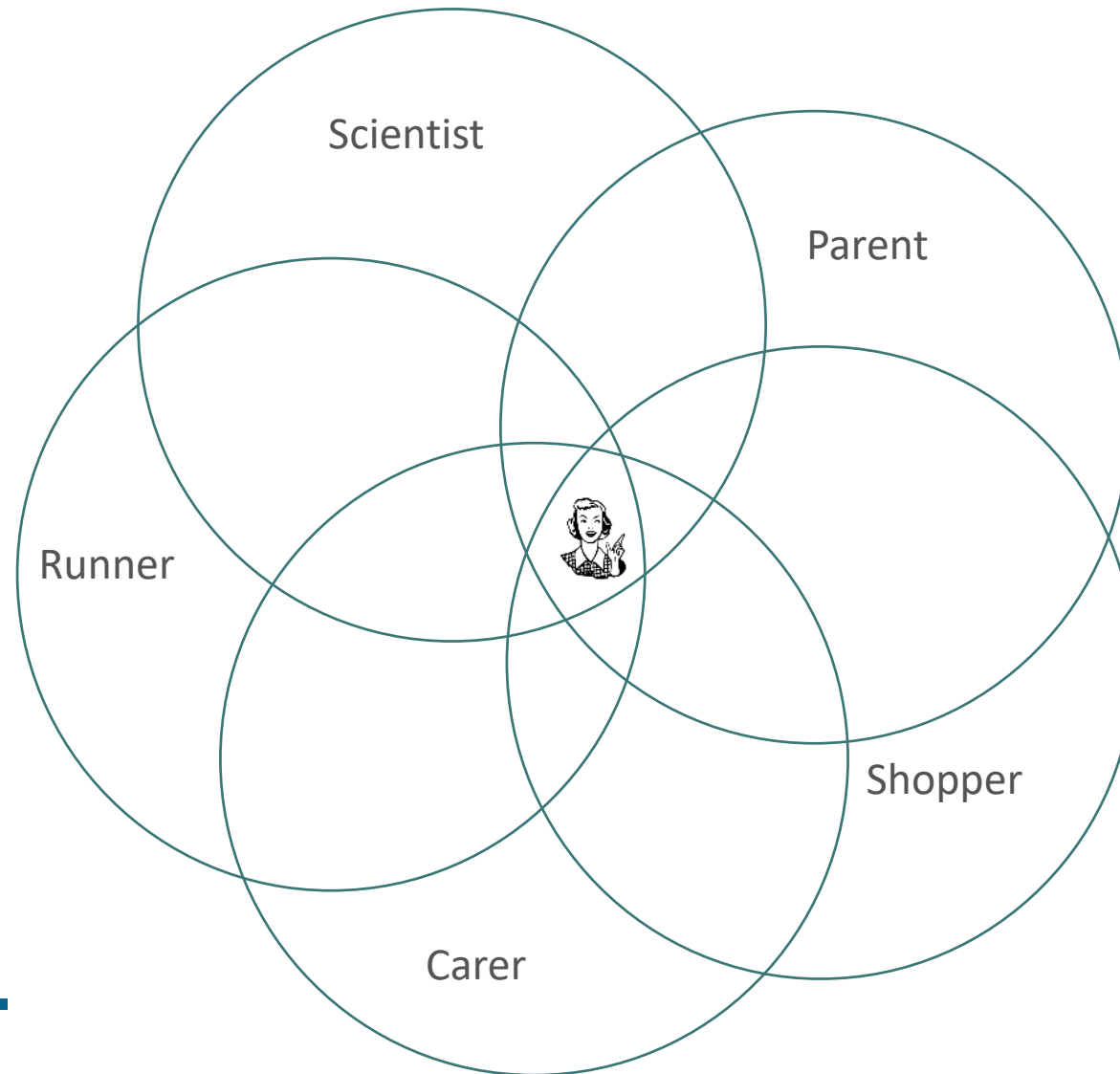


1 IN 8 DEATHS

AIR POLLUTION CAUSES ONE IN EVERY EIGHT PREMATURE DEATHS WORLDWIDE.



Behaviour change usually focuses on individuals...



But we are all part of groups and society too.

The ClairCity concept...

Where and what?



Who and why?



ClairCity



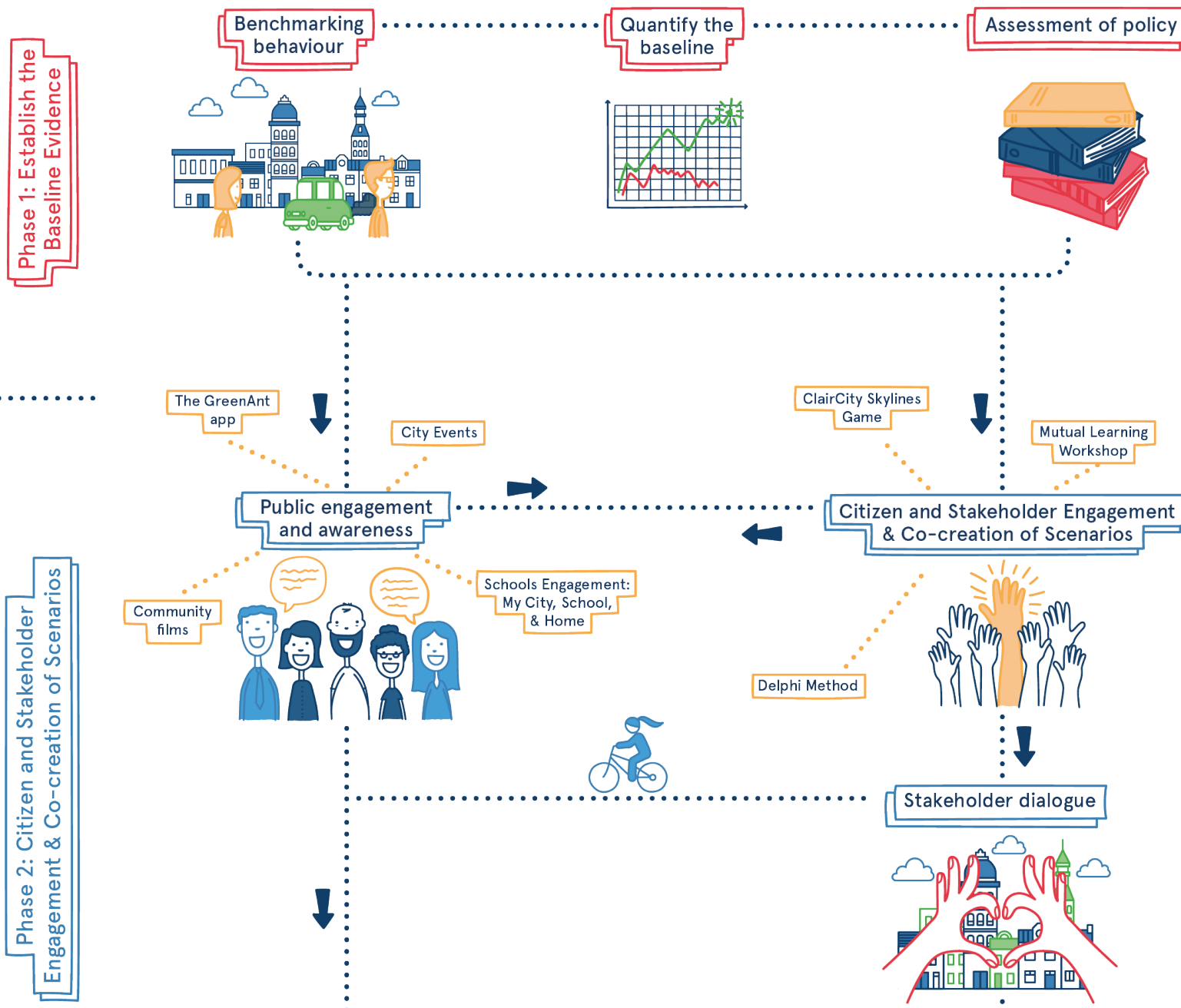
Citizen-led air pollution reduction in cities

Everyday, air pollution and carbon emissions are produced by our commutes to work, by heating our homes, or through our daily lifestyles.

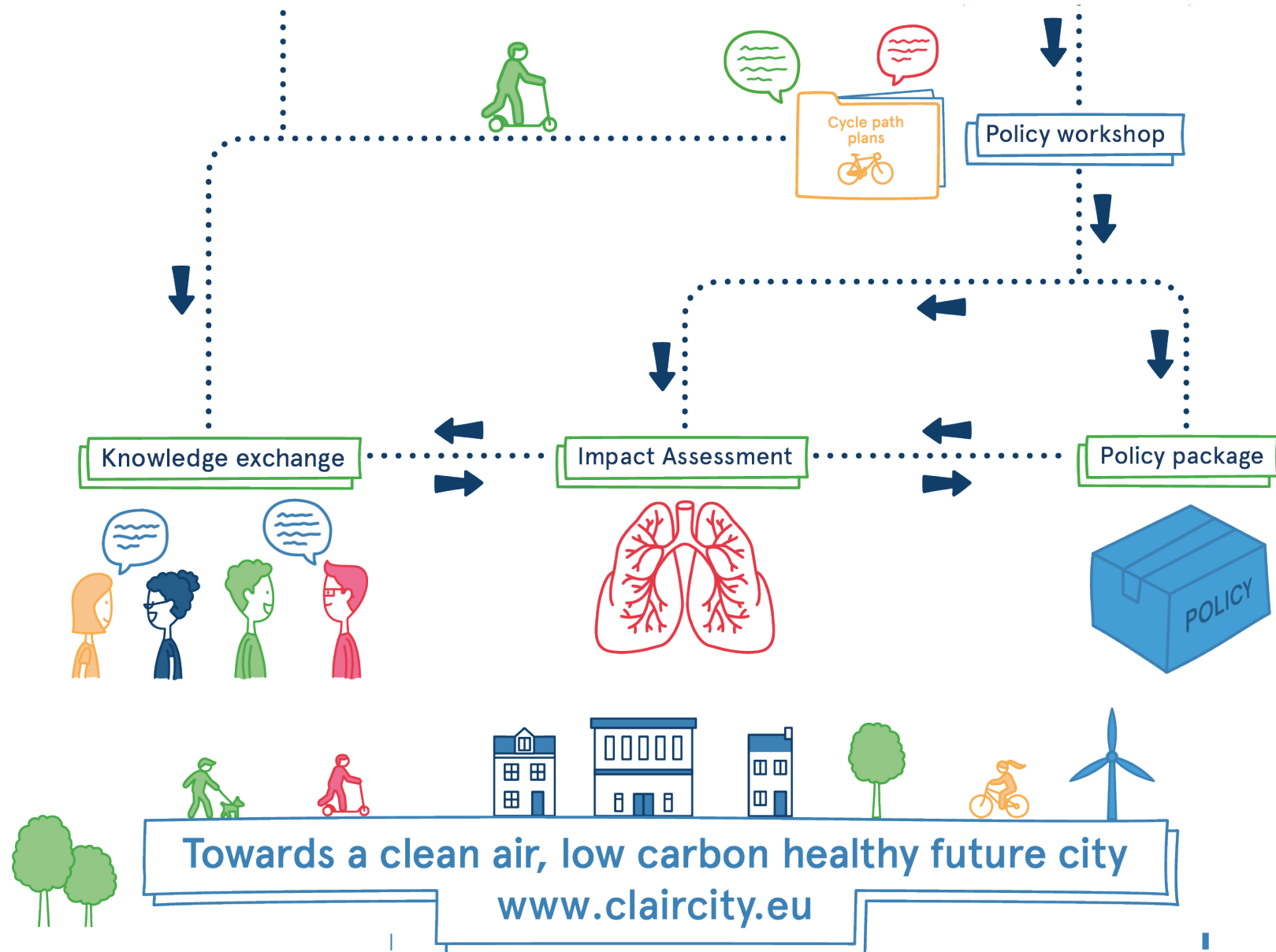
The ClairCity aim was to create a major shift in public understanding towards the causes of poor air quality, inviting citizens to give their opinions on air pollution and carbon reduction to shape the cities of the future.



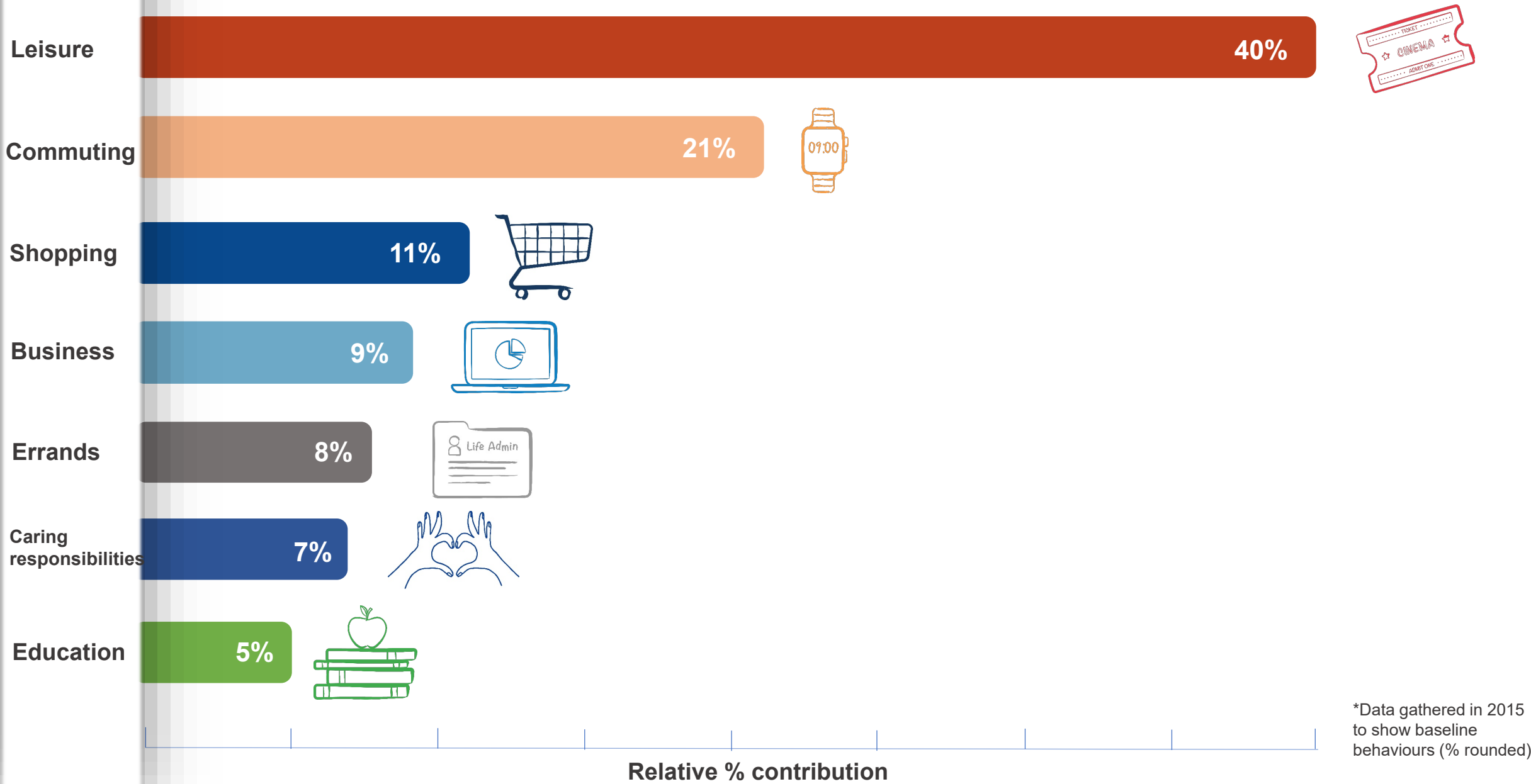
How the ClairCity process engages with a city & its citizens



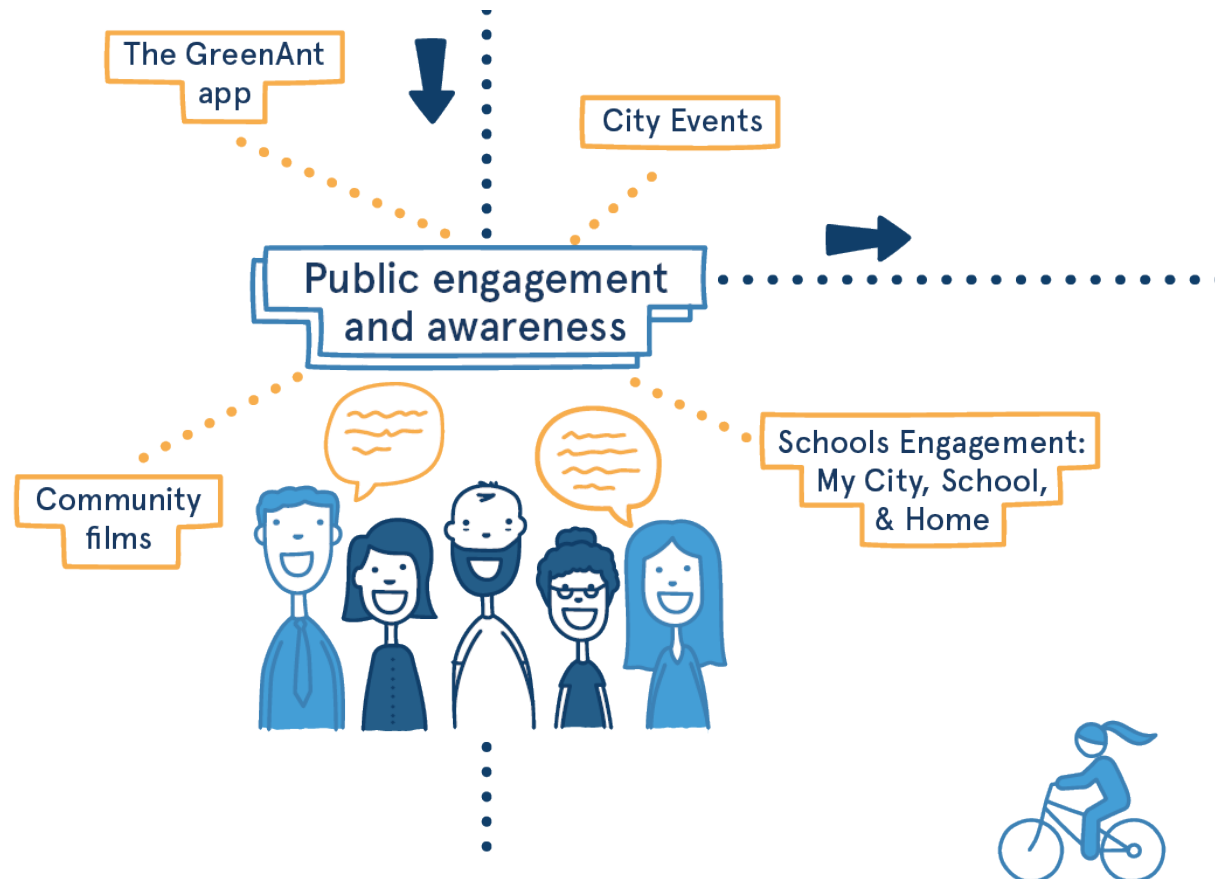
Phase 3: Quantified Policy
Package & Knowledge Exchange



Baseline reports e.g. why we travel... relative distance contribution of our travel activities in Bristol



Engagement tools



Community films



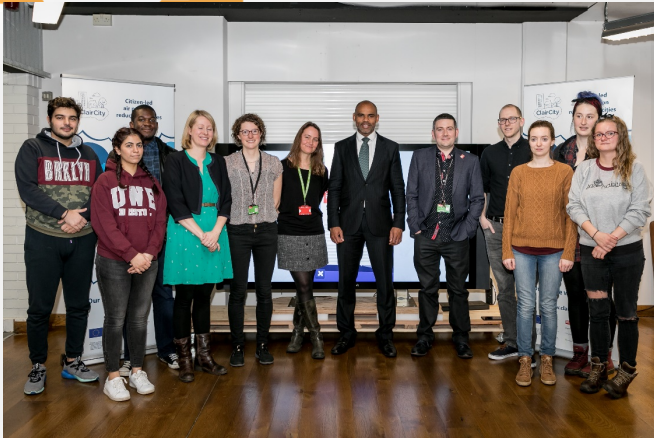
Schools Engagement:



City Events

Engagement tools

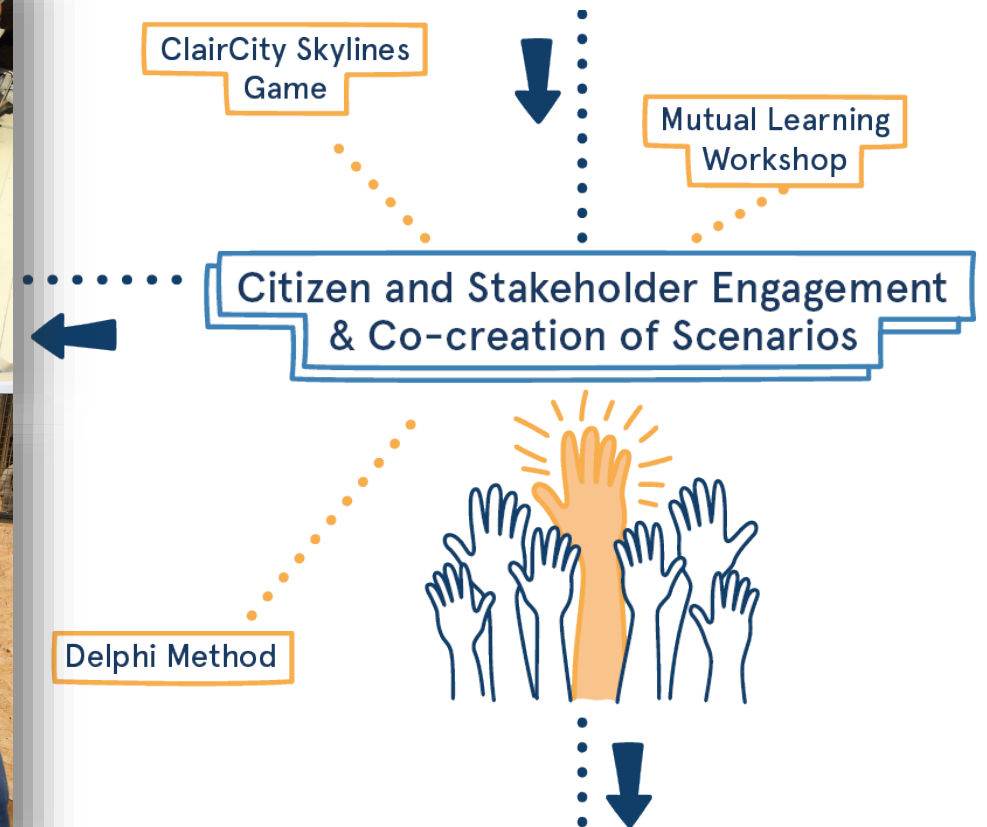
ClairCity Skylines



Delphi Method



Mutual Learning Workshop





ClairCity results

770,253
Twitter
impressions



5,801
YouTube
video views



1,418
Facebook
followers



33,678
Website
visitors



818,736
citizens
involved across
6 cities and
regions

82
Policy makers
consulted



132
stakeholders
involved in Mutual
Learning Workshop



65
Older people
filmed



4887
citizens involved
in Delphi
process



8302
direct
engagements

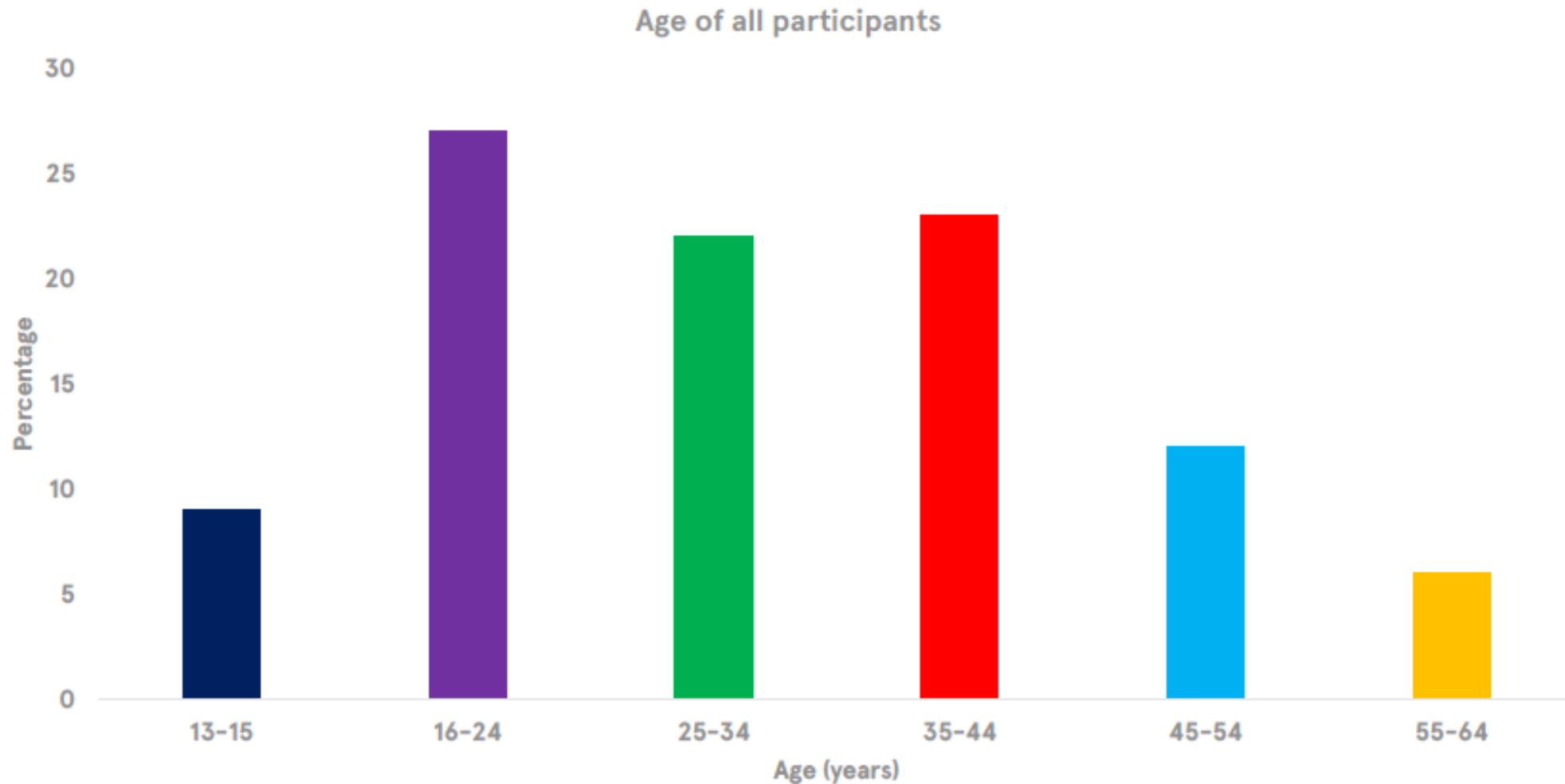


>1000
children engaged
in public events
and lessons

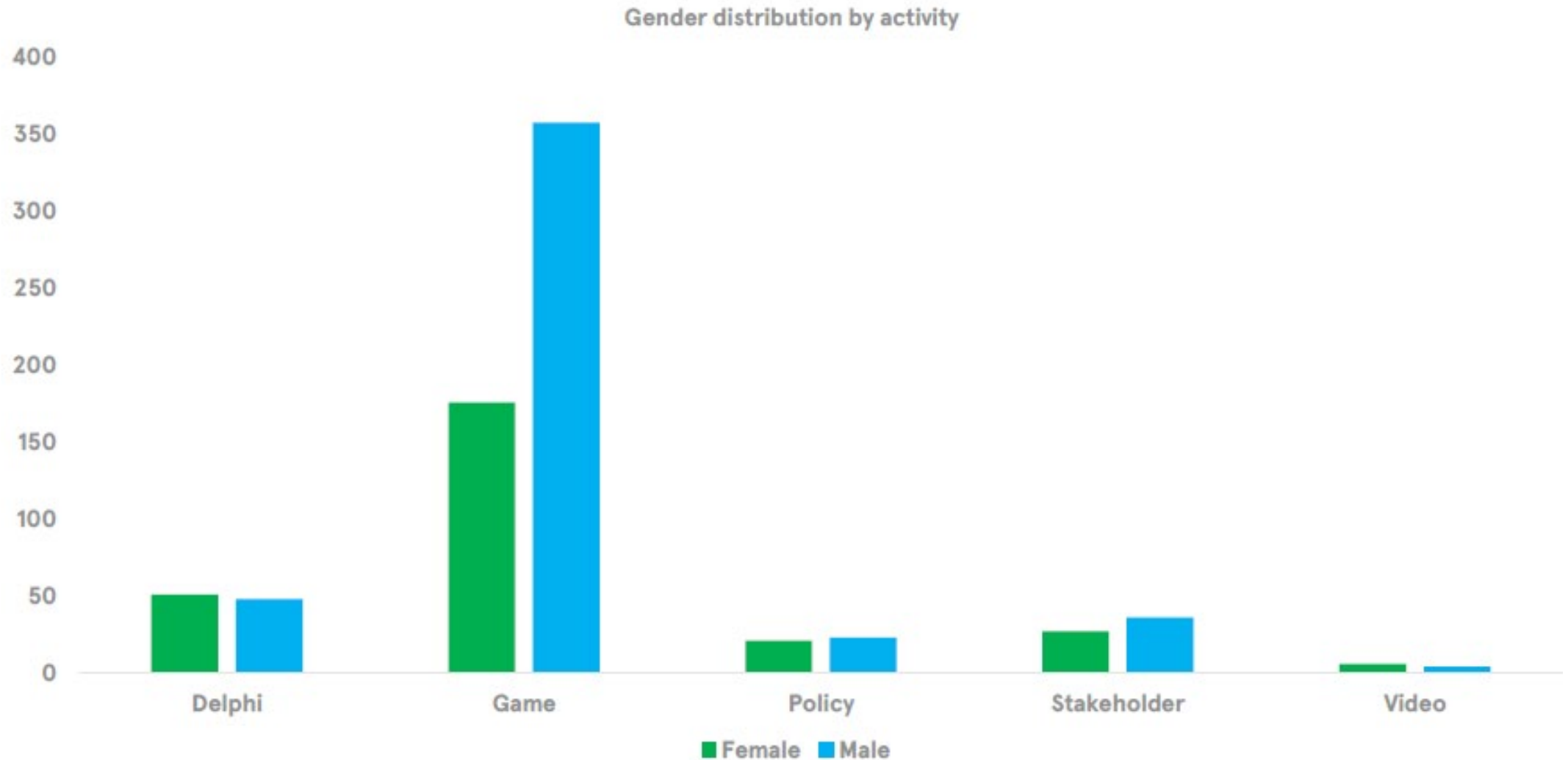
447
school children
engaged in My
School, My City,
My Home
competition



Different activities needed to appeal to different ages



Different activities engage men and women





Citizen-led policy making

- 1 Ban/phase out polluting vehicles
- 2 Make buses greener and cleaner
- 3 Cheaper public transport
- 4 Create alternatives to car use – walking and cycling
- 5 Reduce vehicle road space – increase public transport space
- 6 Improve walking environment
- 7 Charge older/more polluting vehicles entering the city
- 8 Promote electric vehicles
- 9 Awareness raising to promote active and public transport
- 10 Organisations to make it easier for employees to work from home
- 11 Make property developers prioritise air pollution and climate change
- 12 Build housing close to major employment zones
- 13 More local shops and facilities in neighbourhoods
- 14 Organisations to provide flexible working hours for employees
- 15 Improve energy efficiency for housing (rented/existing/new)
- 16 Increase generation of solar and wind power
- 17 Spread economic opportunities across different areas of the city

Example policies suggested (Bristol)

“Not enough public transport (train and bus) in terms of frequency and diversity. Current public transport are too expensive and I am living too far away from work to be able to cycle. I do want to change! Unfortunately it’s too challenging at the moment.”

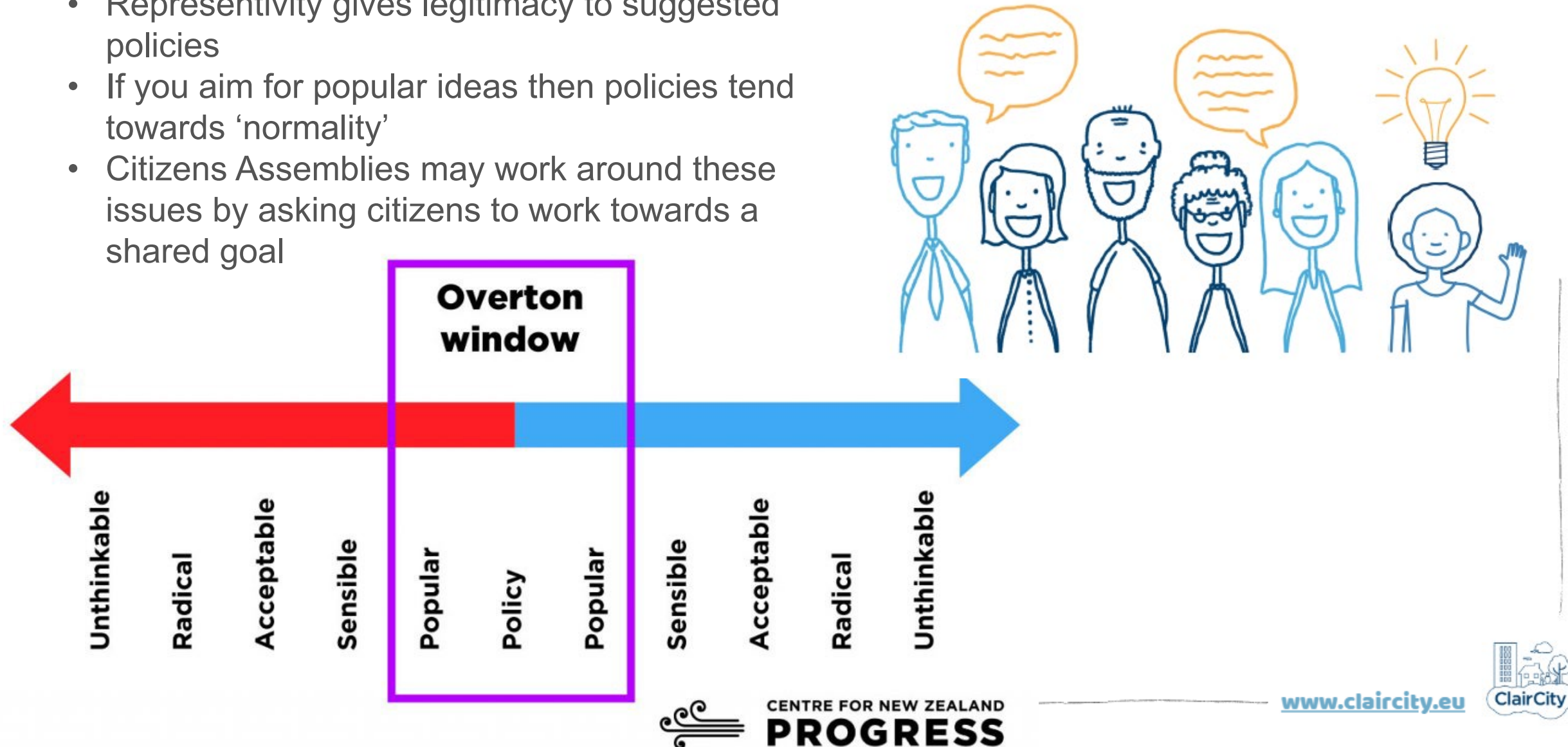
(Female, BME, degree qualification)

“Have you tried going to the countryside with two kids but without a car? No cycle lanes, no acceptable buses at most places.”

(Male, white, degree qualification)

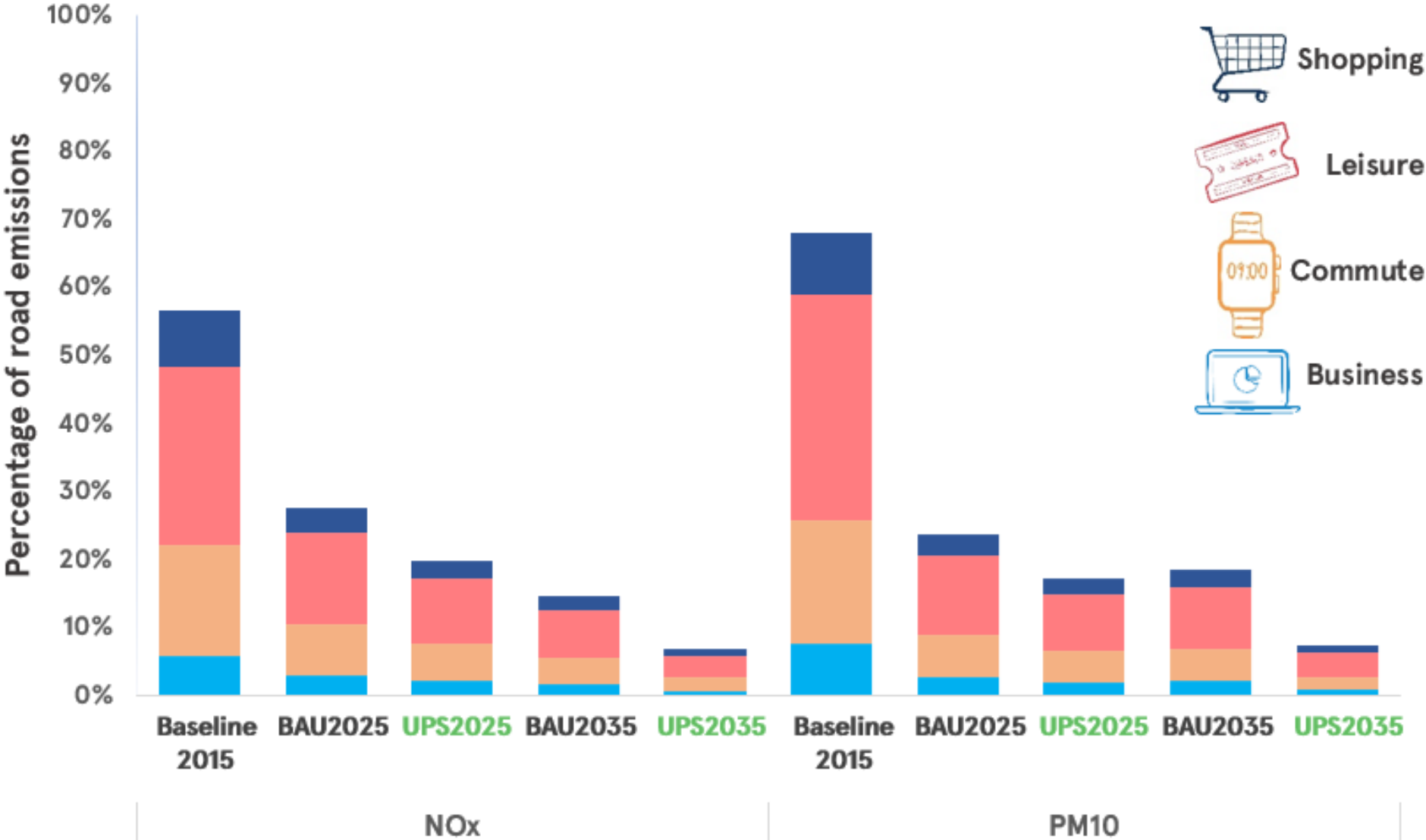
Challenges of citizen engagement

- Representivity gives legitimacy to suggested policies
- If you aim for popular ideas then policies tend towards 'normality'
- Citizens Assemblies may work around these issues by asking citizens to work towards a shared goal





Road transport NOx and PM10 emissions scenarios by motive

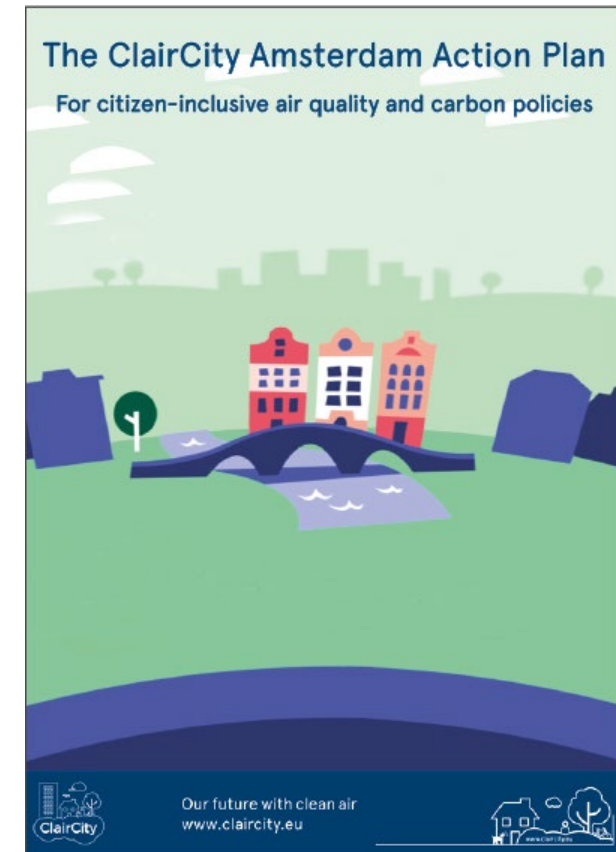
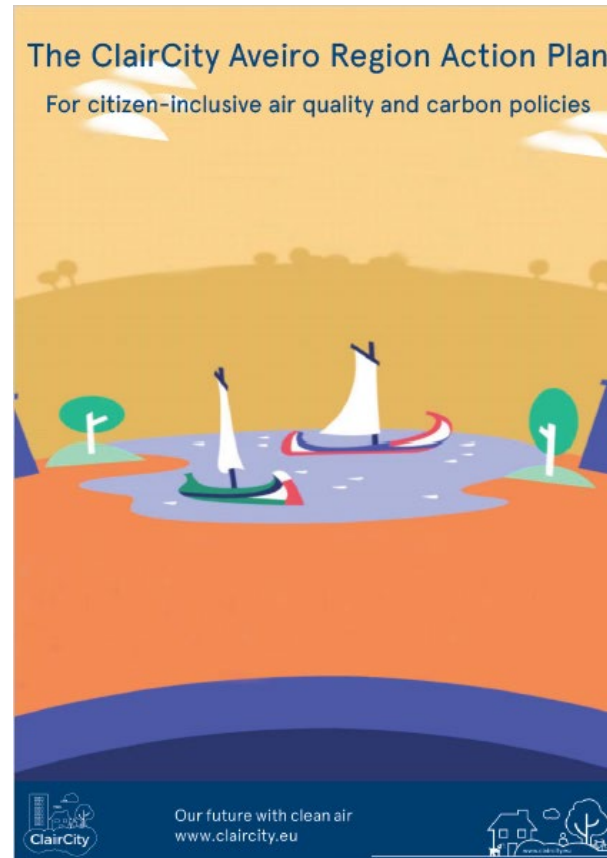


NOx and PM10 emissions by scenario and Motive

Citizens
were more
ambitious
than
Business
as Usual

Policy packages

www.claircity.eu/reports/



www.claircity.eu



A European project that enables citizens to initiate a policy-making process with fully automated measurement data in the field of mobility and air quality



WeCount has received funding from the European Union's Horizon 2020 research and innovation programme under grant agreement No. 872743.

ClairCity resources



www.claircity.eu/take-action/community-activator

Laura.foggrogers@uwe.ac.uk
[@laurafoggrogers](#)
[@Claircity](#)
[@WecountH](#)

www.claircity.eu/take-action/educator



<http://www.claircity.eu/take-action/science-communicator/>

www.claircity.eu

