

Recent Advances in Robot-assisted Echography: Combining Perception, Control and Cognition

Zhenyu Lu¹, Miao Li², Andy Annamalai³, Chenguang Yang^{1*}

¹Bristol Robotics Laboratory, University of the West of England, Bristol, UK

²School of Power and Mechanical Engineering, Wuhan University, Wuhan, China

³Director of Research and Innovation, Iykons, Surrey, UK

*corresponding. cyang@ieee.org

Abstract: Echography imaging is an important technique frequently used in medical diagnostics due to low-cost, non-ionizing characteristics, and pragmatic convenience. Due to the shortage of skillful technicians and injuries of physicians sustained from diagnosing a number of patients, robot-assisted echography (RAE) system is gaining great attention in the recent decades. A thorough study of the recent research advances in the field of perception, control and cognition techniques used in RAE systems are presented in this paper. This survey introduces the representative system structure, applications and projects, and products. Challenges and key technological issues faced by the traditional RAE system and how the current artificial intelligence (AI) and cobots attempt to overcome these issues are summarised. Furthermore, significant future research directions in this field have been identified by this paper as cognitive computing, operational skills transfer and commercially feasible system design.

1. Introduction

Echography (also named as sonography or ultrasound (US) imaging [1]) is an important technique in medicine that has the advantages of low-cost, non-ionizing property, portability, availability and convenience [2], [3]. In the recent decades, the robot technology was widely used in the health care areas, especially in remote surgery, patient rehabilitation and pharmaceutical automation [4], [5] since the 1980s [6], and robot-assisted echography (RAE) system gained advantages due to the following two main reasons.

1) Availability of skillful physicians is limited and they are completely absent in some healthcare centres. Hence, RAE system becomes more meaningful for remote diagnosis [7].

2) Physicians exerted large forces to diagnose patients using ultrasound probes with uncomfortable gestures, which usually endures strain injuries [4], [8], [9].

Since the last century, the scientist embarked upon the development of medical RAE system [10]. Nowadays, a number of echography systems have been developed and integrated into the robotic surgical system, e.g. Da Vinci robotic surgical system [11], [12], [13]. Similar to control paradigms division of the surgical robots [6], previous researches overviewed and classified the RAE system into three categories: autonomous US imaging, teleoperated US imaging, and human-robot cooperation [14]. These days, more and more RAE systems are designed with two or more functions [15], [16], [17]. This paper presents the recent advances in RAE system and provides a comprehensive literature review of perception, control, and cognition of RAE system.

The subsequent sections of this paper are organized as follows. Section 2 presents system construction, applications, and related projects and products. Section 3 covers the major challenges and the related techniques. Section 4 provides a discussion about the system and the future scope of this research area highlighting the emerging techniques such as cognitive computing and imitation learning. Section 5 provides the concluding remarks.

2. Preliminaries

Prior to embarking on the advances in the field of RAE, it is imperative to establish the system construction, and the applications and the progress made by other research groups across the globe are presented in this section.

2.1. System construction

Traditionally, the RAE systems have been built with three basic components: a robotic arm for manipulating US probe, joystick/haptic and display interface, and robot controller [10], [14], [15]. Several equipment, sensors, and software modules are added to enhance system abilities to satisfy different demands e.g. magnetic resonance imaging (MRI), computer tomography (CT), X-ray, electromagnetic tracking system and surgical needles [18]. Fig.1 presents a typical experimental setup designed in the early years.

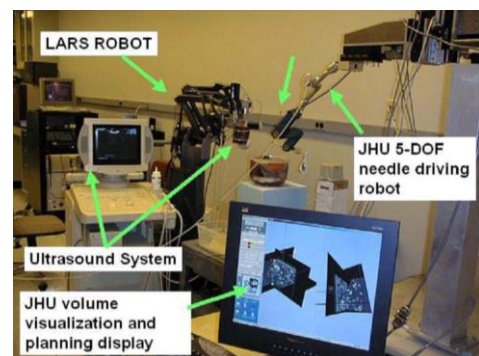


Fig. 1 Overall experimental setup ([15], [18])

Additionally, the RAE system was integrated with further abilities of perception, diagnosis based on multimodal information, tool-based manipulation (needle guidance and intraoperative ultrasonography) and human-robot interaction. The robot is a perception/cognition-driven tool that provides accurate position information and enables the physicians to treat patients by the physicians safely and effectively. Fig. 2 illustrates the structure of the RAE system, which consists

of three control paradigms: autonomous, teleoperated and human-robot cooperative mode.

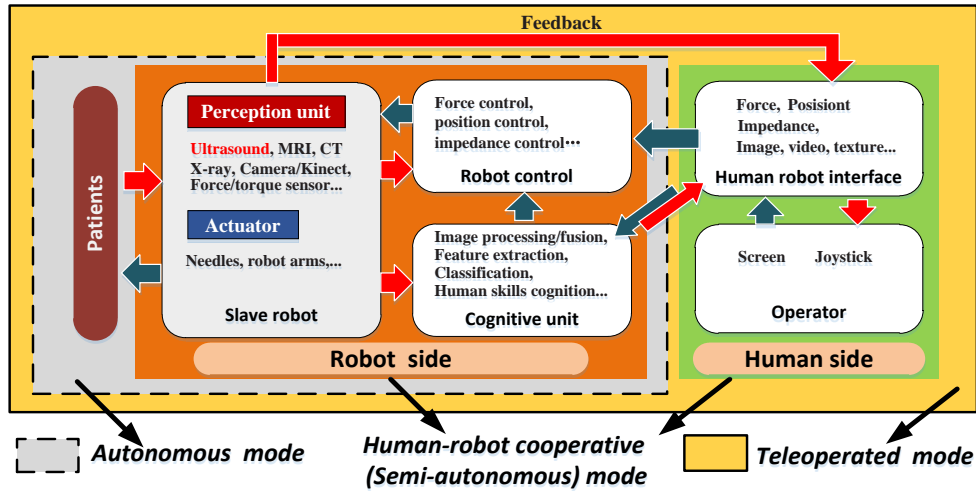


Fig. 2. Fundamental information flow and construction of the RAE system

The process starts from the patients, and the perception unit obtains the images (ultrasound, cameras, CT, MRI, etc.), and forces by the use of medical devices fixed at the robot end or external equipment. Then, the information (red arrow) returns to the robot control side for serving control, to cognitive unit for increasing the feasibility and autonomy of the RAE system. Then, the cognitive results as referring commands, are sent back to the robot control side (blue arrow), or to the robot-human interface (RHI) side for further decisions. The three units (background in dark orange) form a close-loop frame for the autonomous RAE system, which moves after getting the surgeon’s concurrence with preprogramed orders. The perceptive feedback signals will be delivered to the RHI side in the teleoperated mode. Preliminary cognition results are combined with various physical signals e.g. position, force, impedance, etc and symbolic/graphic signals are provided for interaction with the operators by devices. The surgeon specifies the desired actions and enacts the robot’s motions directly, and examples include Da Vinci surgical robotics. The human-robot cooperative RAE system is described as the shared control or semi-autonomous control between the user and robot device [14]. Operators control some degrees of freedom (DoF) and the rest is controlled by the robot such that relieves the burden and provides convenience for surgical tasks. Examples show that the control mode can be realized both in the local and remote areas [17]. Detailed examples are presented in Table 1 and Table 3.

2.2. Applications

2.3.1 Extracorporeal diagnostic

Originally, RAE system was created as an innovative system to address the problem of limited availability of skilful personnel (such as ultra-sonographers) and to assist with remote diagnosis. Hence, developing the diagnosis capability has been the main priority since the late 1990s [19]. Except for special dextrous devices design, integrating more sensors and devices and developing smart diagnostic software and algorithms are also widely studied. Until recently, the pure RAE system and the system with multiple diagnostic devices (MRI, CT, X-ray, ultrasound etc.) have been used for renal tumour [20], oesophageal conditions [21].

2.3.2 Needle guidance

Before the ultrasound imaging, MRI and CT models had been used for surgical planning [22]. From about 2001, Megali et al. [22] and Tsekos et al. [24] developed robotic systems for prostate and breast biopsy and therapeutic interventions separately. The RAE system provides needle guidance for biopsy, therapeutic interventions, and brachytherapy, which solves the absolute dependence to operator skills and even improve success rate. [19] concluded the brachytherapy and robotic ablation systems and stated that the US scanning was performed internally through surgical incisions. Some recent researches reveal more advantages of ultrasound guidance such as low-cost [25] and feasibility of the data fusion with other technique e.g. magnetic resonance imaging [27].

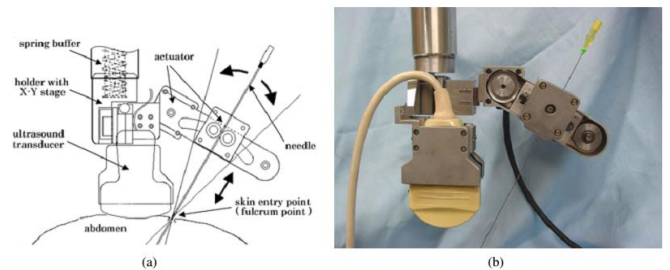


Fig. 3. Ultrasound-guided motion adaptive needle-insertion instrument ([25])

2.3.3 Intraoperative ultrasonography (IOUS)

As Russo et al. [15] stated that “the diagnostic accuracy of the techniques i.e. preoperative imaging and surgical exploration doesn’t exceed 60-80%, however, IOUS allows for early diagnosis and precise localization of many diseases, and it is an excellent guidance tool for accurate and radical surgical treatment.”. IOUS, dating back to the 1960s, has been integrated with robot techniques and used for detection of liver ablation [15], liver metastases [28], liver tumours [29], and intramedullary tumours [30]. Now, IOUS is developed with the device applications of surgical robotics, according to the mode of ultrasound imaging, which, in [19], are categorized into three major groups: hand-held, trans-rectal, and robotically integrated. Some recent researches focus on the increasing the “smartness” of the surgical instrument, such as the programme of ‘smart surgical instrument (SSI)’, which proposes the integration of

ultrasound imaging into the ultrasonic scalpel to improve real-time sensing during the surgical procedures [31].

2.3.4 Other applications

Apart from the previous three major applications, RAE systems have been successfully adapted to perform a number of other useful functions. Chang et al. [32] and Stetten et al. [33] proposed a technique based on the special geometry of the intraoperative acquisition device to add US images onto the video images of the patients. Meng et al. [34], [35] introduced a mirror RAE system that a physician in the master side operates the robot holding a US probe to inspect a leg, and on the other side, robot arm follows master's motions and scan the other leg under the navigation of Kinect.

2.3. Related projects

From 1990, several groups and relative projects have been supported by Europe, Japan, US, France, UK etc.[36]. Table 1 presents some of the projects.

Table 1 Related project and products *

Project	Country/ Institute	Control mode	Year
Hippocrate [37][38]	France	TEL/AUT	1994
TERESA[49][42][50]	ESA	TEL	1995
MIDSTEP[41]	EU ACTS	TEL	1996
In vivo [46]	EU	TEL	2000
TER/TERMI [15],[16]	US	TEL/AUT	2001
RUDS[45]	Japan	TEL	2001
OTELO[43][44]	EU IST	TEL	2006
ESTELE[42]	ESA	TEL	2007
PROSIT[17]	France	TEL/HRP	2008
WTA-2 [9]	Japan	AUT	2010
FP-USM[47]	German	TEL	2011
iFIND [39],[40]	UK	AUT	2014

* TEL: teleoperation, HRP: human-robot cooperation, AUT: automation

Among the projects in Table 1, there are some milestones. Hippocrate [37], [38] was known as the first RAE system, though there was an automated breast ultrasound (ABUS) device, which had been first proposed by Mauro et al. in the 1970s [48]. Hippocrate relied on the technologies of force sensor, position sensors, motors, control boards, computer, and provided special robot arm, force control and feedback, safety method, calibration, and user interface. TERESA [49], [50], ESTELE [42], and PROSIT [17] were related projects using similar design that was designed by Arbeille's group. Object of MIDSTEP project is to realise both interventional teleoperated US demonstrator and minimal invasive surgery (MIS) [41]. The iFIND project started in 2014 and aimed to improve the accuracy of routine screening in pregnancy by developing RAE system and US technologies that allow screening of fetal in an automated and uniform fashion [39], [40].

3. Challenges and Key technologies

Though the RAE technology has been studied for more than twenty years, it still strongly relies on the operator skills, including the precise probe positioning, accurate orientation, image analysis, and mental construction of 3-D anatomy based on 2-D images. Furthermore, humans have the limitations such as manipulation ability and dexterity outside natural, limited geometric accuracy, and prone to fatigue and negligence [25]. But, the robot can overcome these limitations due to the strengths of excellent geometric accuracy, robustness and operational stability. Most of previous researches about RAE system or even surgical systems are taken to solve the challenges:

1. To provide an effective and pragmatic system for the surgical staff;
2. To enhance robot's control ability and performance;
3. To improve robot's intelligence for autonomous or semi-autonomous diagnosis and surgery.

In order to solve these diverse challenges, many researchers endeavour to design novel systems by merging few advanced techniques. Such advances fall into four major categories: mechanical design, sensors and perception, robot control, and autonomous cognition.

3.1. Mechanical design

Degoulange et al. [37], [38] were pioneers in developing a 6-DoF articulated robotic arm by providing force control to satisfy the rotational constraints at the tip of the probe.



Fig. 4. The Hippocrate robot arm ([37])

Simultaneously, Salcedo et al. also developed a 6-DoF robot arm that had a parallel linkage structure in 1999, with counter balancing and backdrivable joints to ensure safety [18].



Fig. 5. Robotic arm for teleoperated ultrasound([18],[20])

In the subsequent researches, the jointed robot becomes one of the main drivers for US imaging. Some researchers even used the redundant robot arm or multiple robots [53]

for RAE system. Table 2 presents some of the designed joint robot arms and their architectures.

Table 2 Robot arm of the RAE system

Institution	Articles	Architecture	Year
Johns Hopkins University	[15]	5DoF+7DoF, Two-arms	2001
UMPS CHU Trousseau	[51]	6DoF	2005
Tokyo University of Agriculture and Technology	[52]	Parallel link 6DoF	2011
University of Oslo	[4]	6DoF	2016
King's College London	[39],[40]	6DoF,One/Two -arms	2019

Some researchers designed the special robot end [55] e.g. wrist [54], [7] or probe holder [42]. In [7], a parallel robot with a 4-DoF serial wrist is designed: 3-DoF for orientation and 1-DoF for probe translation along the axis (**Fig. 6(b)**). The robotic wrist for remote ultrasound imaging in [53] was a 4-DoF device uses parallel mechanisms in configuration to provide a remote center-of-motion. All four actuators are located on the ground, and each actuator is responsible for a required motion of the ultrasound probe. The probe holder in [42] was a special one that does not depend on assistance of robots. But it needs to be held by an operator at the patient site under the direction of the expert in the remote side, the bottom ring of which is attached to the skin of the patient (Fig. 6(c)). There are a lot of similar products e.g. OTELO [43], [44], TER [15], RUDS [45], Masuda's [56] and Najafi's robots [57].

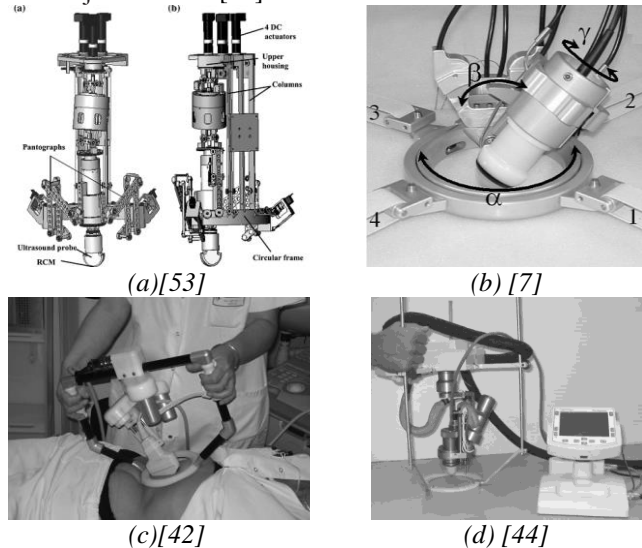


Fig. 6. Special robot end

Apart from the slave robot and actuators, some researchers designed special human-robot interaction (HRI) equipment, though most of experiments are completed by commercial joysticks e.g. Phantom, Touch, Omega. SHaDe is a spherical parallel 3-DoF haptic device that can be used to control the robot orientation with force feedback.

3.2. Sensors and perception

For the needle guidance and IOUS, the RAE system is integrated as an important part of the surgical robot. Here,

we mainly introduce the equipment and sensors that enhance the diagnostic ability of RAE system. CT, MRI, X-ray, and US are all well-established imaging modalities in medical diagnosis [45]. However, they have different drawbacks and advantages. Compared with MRI and CT, the US imaging technique is used more widely than the others, due to its low-cost, non-ionizing, availability and convenience [2], [3]. However, CT and MRI have better inter observer agreement for germinal matrix and reveal more instances in some cases [58]. Thus, some researchers use data fusion technology for registration and guidance. Fig. 7 presents the radiofrequency ablation of a liver mass guided by ultrasound imaging in the CT suite.



Fig. 7. Radiofrequency ablation guided by ultrasound imaging and CT([60])

Table 3 presents a small part of equipped perceptive equipment, sensors to the RAE system.

Table 3 Combined perceptive equipment and sensors of the RAE system

Equip./ Sensor	Articles	Institution	Year
US,CT	[60]	Siemens Corporate Research. Inc.	2019
	[66]	Johns Hopkins University	2013
US, MRI	[61]	NYU Langone Medical Center	2015
	[62]	University of California	2009
US,Camera /Kinect	[53]	Johns Hopkins University	2016
	[71]	Tohoku University	2017
US, Force sensor	[68]	Imperial College London	2016
	[10]	University of British Columbia	2000
US,Camera, Force sensor	[67]	University of Maryland	2019
	[69][70]	Northwestern Polytechnical University	2018

After acquiring the measured data, researchers focused on the algorithms design of perception. The initial purpose of RAE system is to utilize the accurate position of robot to reconstruct 3D US images by 2D US images and providing better volumetric understanding for the physician to select the needle entry and target points [59]. Recently, more and more researchers pay more attention to data fusion method for guidance of prostate [63], [64], liver and kidney biopsies [67]. In [60], a new method to simulate medical US from CT in real-time is proposed to correct the registration errors manually, reproducing the majority of ultrasonic imaging effects based on the designed equipment (shown in Fig. 7). An evaluation study (involving 25 patients) was under taken

and correctly registered without any manual interaction (by US) in 76% of the cases.

The integrated sensors with US probe have been widely studied, e.g. marks, cameras and force sensors et al. In [15], there are some LED markers added at the probe end. Using the optical tracker, the position tracking error of the probe is investigated in the task space. More researchers prefer to use cameras or Kinect for position location. In [71], a probe-camera based system was built for 3D US image reconstruction with functions of calibration and localization, and the results showed that the location of the US probe can be estimated with 2 mm error for the probe travel distance of 200 mm.

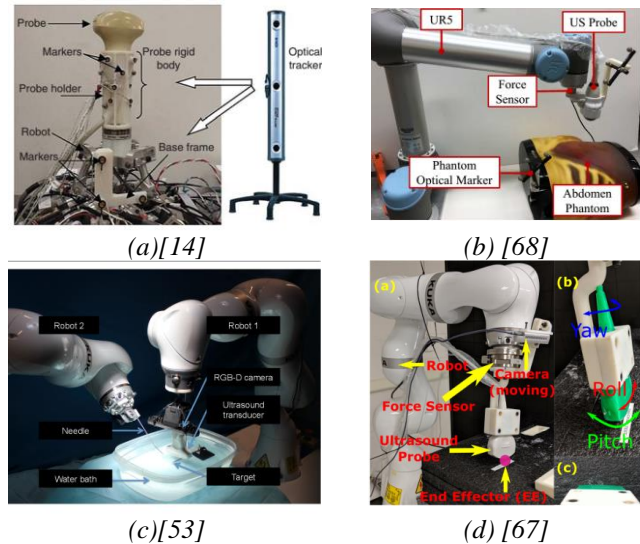


Fig. 8. Sensors equipped with the RAE system

Force control is mandatory if clinical tests contain artery elasticity [37]. The force/torque sensor has been added to the RAE system in the early study [10], it provides the slave environment to the operator in teleoperation control mode and prohibits large contact forces to avoid injury to the patients, though some surgical robots do not provide with force feedback in teleoperation mode. From the view of teleoperation, a four-channel architecture transmitting both the position and force information is helpful to enhance manipulation transparency [72]. Recently, there is some research integrating more sensors to RAE system. In [69], [70], a system framework is presented with constitution of a US machine, a depth camera for obtaining 3D contour, an industry computer for collecting B-scans and their positional information for the subsequent volume, two force sensors for measuring the contact force between the probe emission plane and tissue surfaces for fine-tuning the robotic arm.

3.3. Robot control

Accurate probe guidance and registration, contacting soft tissues with suitable forces, or multiple robot cooperative operation effect rely heavily on the performance of the robot control performance. As mentioned above, three modes are concluded as autonomous, teleoperation and human-robot cooperative control. Furthermore, various control methods such as the three-channel environment force compensation (EFC) control [73], PD control [10], adaptive control [74], neural network (NN) control [75] and fuzzy control [76] are taken to solve US guidance with uncertain environmental forces [73], and varying time delays.

Different control strategies have their own advantages and limitations. Autonomous RAE system completes scanning and imaging through a complex path under the programmes. Mostly, the system uses the 2-D or 3-D images for surgical CAD/CAM applications or even needle guidance intervention. However, they can only be applied in simple procedures and hard to be used in the deforming anatomy. Teleoperation provides real-time experienced operation signals and it is also the main way for the MIS and remote surgery. Remote distance causes large time delays, a lack of immersion experience, and an increase of the cost of surgical robot [78]. Human-robot cooperative mode absorbs human experience and precision and strength of robotic devices in the shared controlled structure so that the robot can relieve some of the burdens from the operator.

From the view of acquired signal-based controller design, the common control modes consist of position control, force control, impedance control and hybrid control. Most RAE systems have two or more control modes, e.g. [67] provided the position control and hybrid control, the latter of which uses a combination of position and rate guiding. [77] proposed a two-layer passivity-based bilateral teleoperation architecture for the RAE system stability, despite unknown varying time delays, which allows implement different kinds of position and force control laws. In [79], the authors used a velocity-control-based impedance control for tele-operated RAE system, which can transmit the contact force to the doctor efficiently with the proposed motion control law. For the considerations of safety and stability, a force controller is also completed.

3.4. Autonomous cognition

As the system structure presented in [80], robot controller provides low-level primitive control signals as motor driving input, and cognition and management rely on the human operator and the high-level cognitive and task plan module. Further, in [81], the authors distinguished the two definitions “detection” and “diagnosis”: detection for locating the lesion region of the image and diagnosis for identifying the potential diseases. With the trend of artificial intelligence (AI) in the 21st century, the RAE systems are designed with increasing complexity, intelligence and provide enhanced convenience. The autonomous cognition contains three main aspects: US diagnosis based on image processing, robot learning (from demonstrations) and signal processing (for easy human recognition and understanding).

The first aspect is a part of the computer-aided diagnosis (CAD) system, which was first used in the breast tumour diagnosis in the 1960s [82]. The general flow chart of ultrasound CAD is shown in Fig. 9.



Fig. 9. The general flowchart of CAD system ([81])

Feature selection and classification of the lesion are essential steps to achieve the final purpose. Texture, morphology, feature based on statistical model, descriptor features and different kinds of classifiers built the basis of the traditional US CAD system and inspired research with in the field of Deep Learning (DL) technology [81]. From about 2006, Hinton and his student published the first paper

about DL [83], and learning methods were used for the CAD system. In [84], in order to reduce latency for ultrasound-based robotic tracking tasks, a deep learning method was explored to extract pertinent information directly from raw radio frequency channel data to locate targets of interest from a single plane waveinsonification. In [85], deep convolutional neural network (DCNN) architecture was proposed to automatically recognize fetal facial standard plane (FFSP). A composite neural network framework was proposed for automatic identification of different standard planes from US videos, which was different from previous studies specifically designed for individual standard planes. Some researchers studied the convolutional neural networks (CNN) for classification of US images [87] and image enhancement [88]. Compared with traditional methods, the DL method does need the feature designed by the human but from the presented results of open sources. But, the accuracy, sensitivity, and specificity still have differences.

The second aspect is skills cognition for US scanning by demonstration. In [89], a learning-based controller was shown to enable autonomous extended focused assessment with sonography in trauma (eFAST) scanning according to expert demonstrations. The designed method was two-fold. One automatically acquires the USS images and sends them to the expert radiologist without the need for robotic teleoperation. The other applies the learning method based on Gaussian mixture regression (GMR) and Gaussian mixture modelling (GMM) by human demonstration to reduce the complexity of robotic programming. While in [34], a mirror robotic US scanning system is built by a two-arm robot. The sonographer's operation on the probe was recognized and used for robot's action under the navigation of Kinect. Clustered viewpoint feature histogram (CVFH) descriptors of segmented probe and CAD training data were calculated for probe recognition.

The final issue is about providing better cognitive feelings and understanding of human beings. According to the depictions of [90] and [91], the spatial representation should be derived by not only modality-specific record of perception but also through common cognitive mediation. The experiment results in [92] shown that CAD images alongside the original ultrasound images can improve the perceptual tasks of non-radiologists. But for expert, the improvements are small in the perceptual and cognitive tasks. Thus, some researchers used techniques e.g. augmented reality (AR) [65], [93], virtual reality (VR) [94] to visualise US images to improve the cognitive ability for the echography leaners.

4. Discussion

The RAE system has been developed for several decades. During the time, it absorbed many techniques and equipped some sensors to enhance the scanning accuracy and recognisability. However, it still deeply depends on humans' experience and cannot independently complete complex tasks. Hence, authors of this paper are of the view that the developments in AI and human-friendly robot techniques will provide the tools for solving these problems. This section provides three significant areas of further research developments in this field.

4.1 Cognitive computing

Cognitive computing aims to develop a coherent, unified, universal mechanism inspired by the mind's capabilities [95]. Though the state-of-the-arts learning methods satisfy some classification and cognitions tasks with acceptable and human-like correctness, they cannot throw light on each other over different tasks. As Allen Newell described, we need "a single set of mechanisms for all of the cognitive behaviour. Our ultimate goal is a unified theory of human cognition." [96]. For the RAE system, ultrasound machine provides the raw data, and a strong cognitive computing system helps to process it and export the diagnosis results directly without the internal steps of data transformation for cognition especially with the help of human doctors.

4.2 Operator skills transfer and learning

Though the strain injuries of the physicians are released by RAE system, some in-hand skills such as modifications of probe scanning attitude and the corresponding impedance are lost. Therefore, how to store and transfer the human manipulation skills is as important as enhancing the image recognition ability. In [97], a training system for US-guided needle insertion procedures was designed. The system involved the issues such as surface and volumetric registration, solid texture modelling, spatial calibration, and real-time synthesis and rendering of the US images. The authors even provided principles and metrics for verifying effectiveness of the training process. However, it doesn't provide force guidance during the operation process, but skills transfer and learning are easily achieved during human hand-to-hand teaching. Some recent researches of human manipulative skills are detailed in [97]-[100].

4.3 Commercially feasible system design

In [4], the RAE system was designed using commercial UR5 robot. From the beginning of the 21st century, the collaborative robots (cobot) are manufactured by many companies e.g. Cobotics, KUKA, UR, and ABB, which provide safer interaction with human beings in a shared space. The commercial cobots balance the cost and safety in a pragmatic manner; it is an ideal driver for the development of future of RAE systems.

5. Conclusions and further work

This survey summarised the applications and projects, challenges, technologies and progress of RAE system from the view of system construction, which has main modules: perception, control and cognition. The development of each module enhances the abilities of RAE system. Especially, the achievements acquired in areas of AI and cobot promote RAE system to provide a low-cost intelligent service. Further research directions discussed in this paper include cognitive computing, operational skills transfer and learning, and commercial and feasible system, which are also suitable for other robot applications e.g. surgical robots and service robots.

From the literature review, it becomes clear that there is a lack of study interest focussing on the operational skills required for ultrasound hand-on scanning. In fact, an interaction with suitable contact force, scanning direction, and voice not only provide a comfortable feeling to the patients but also improve the image qualities. Similar to the diagnosis based on images, the recognition of human

motions in other areas also widely used the learning methods for training [101] and human-robot collaboration [102]. A comprehensive learning frame of US images and human operation skills will be appraised to bring a smarter and more human-friendly feeling to the patients.

6. Acknowledgments

This work was supported by the National Natural Science Foundation of China (Grant No. 51705371), the Natural Science Foundation of Jiangsu Province (Grant No. BK20180235)

References

- [1] 'Echography', <https://en.wikipedia.org/wiki/Echography>.
- [2] Jacobson, J. A., 'Ultrasound in sports medicine', *Radiologic Clinics of North America*, 2002, 40, (2), pp.363-386.
- [3] Sigrist, R.M., Liau, J., El Kaffas, A., et al.: 'Ultrasound elastography: review of techniques and clinical applications', *Theranostics*, 2017, 7, (5), pp.1303-1329.
- [4] Mathiassen, K., Fjellin, J. E., Glette, et al.: 'An ultrasound robotic system using the commercial robot UR5', *Frontiers in Robotics and AI*, 2016, 3, pp. 1.
- [5] 'Medical robot', https://en.wikipedia.org/wiki/Medical_robot
- [6] Taylor, R.H., Menciassi, A., Fichtinger, G., et al.: 'Medical robotics and computer-integrated surgery', *Handbook of robotics* (2nd Ed), Springer, 2016, pp. 1657-1684.
- [7] Vilchis, A., Troccaz, J., Cinquin, P., et al.: 'A new robot architecture for tele-echography', *IEEE Trans. Robot. Autom.* 2003, 19, (5), 922–926.
- [8] Salcudean, S., Bell, G., Bachmann, S., et al.: 'Robot-assisted diagnostic ultrasound—design and feasibility experiments,' In *International Conference on Medical Image Computing and Computer-Assisted Intervention* Springer, Berlin, Heidelberg. Sep. 1999, pp. 1062-1071.
- [9] Nakadate, R., Tokunaga, Y., Solis, J., et al.: 'Development of robot assisted measurement system for abdominal ultrasound diagnosis, ' in *3rd IEEE RAS and EMBS International Conference on Biomedical Robotics and Biomechatronics*, Tokyo, Japan, Sep. 2010, pp. 367–372.
- [10] Salcudean, S. E., Zhu, W. H., Abolmaesumi, P., et al.: 'A robot system for medical ultrasound', *Robotics Research*, Springer, London, 2000, pp. 195-202.
- [11] Dedieu A., Rault A., Collet D., et al.: 'Laparoscopic enucleation of pancreatic neoplasm', *Surgical endoscopy*, 2011, 25, (2), pp.572-576.
- [12] Guo, J., Li H., Chen Y., et al.: 'Robotic ultrasound and ultrasonic robot,' *Endoscopic ultrasound*. 2019, 8, (1): pp.1-2.
- [13] Mohareri, O., S. Salcudean. 'da Vinci® auxiliary arm as a robotic surgical assistant for semi-autonomous ultrasound guidance during robot-assisted laparoscopic surgery.' In *Proceedings of the 7th Hamlyn Symposium on Medical Robotics*. London, UK, Jul. 2014, pp. 45-46.
- [14] Monfaredi, R., Wilson, E., Azizi koutenaie, et al.: 'Robot-assisted ultrasound imaging: Overview and development of a parallel telerobotic system', *Minimally Invasive Therapy & Allied Technologies*, 2015, 24, (1), pp.54-62.
- [15] Gonzales, A.V., Cinquin, P., Troccaz, J., et al.: 'TER: A System for Robotic Tele-Echography', In *International Conference on Medical Image Computing and Computer-Assisted Intervention*, Netherlands, Oct. 2001, pp. 326-334.
- [16] Vilchis-Gonzalez, A., Avila-Vilchis, J.C. Garcia-Torres, A.: 'TERMI robot'. In *Electronics, Robotics and Automotive Mechanics Conference*, Morelos, Mexico, Sep. 2007, pp. 464-469.
- [17] Fonte, A., Essomba, T., Vieyres, P., 'Robotic platform for an interactive tele-echographic system', the *prosit anr-2008 project*. May, 2010.
- [18] Boctor, E. M., Fischer, G., Choti, M. A., et al.: 'A dual-armed robotic system for intraoperative ultrasound guided hepatic ablative therapy: a prospective study', In *IEEE International Conference on Robotics and Automation*, New Orleans, LA, USA, April 2004, 3, pp. 2517-2522.
- [19] Priester, A.M., Natarajan, S. Culjat, M.O.: 'Robotic ultrasound systems in medicine', *IEEE transactions on ultrasonics, ferroelectrics, and frequency control*, 2013, 60, (3), pp.507-523.
- [20] Ritchie, R.W., Leslie, T., Phillips, R., et al.: 'Extracorporeal high intensity focused ultrasound for renal tumours: a 3year follow up', *BJU international*, 2010, 106, (7), pp.1004-1009.
- [21] Wang, S., Housden, J., Singh, D., et al.: 'Design, testing and modelling of a novel robotic system for transoesophageal ultrasound', *The International Journal of Medical Robotics and Computer Assisted Surgery*, 2016, 12, (3), pp.342-354.
- [22] Stoll, J., Dupont, P., Howe, R. D.: 'Ultrasound-based servoing of manipulators for telesurgery', In *Telemanipulator and Telepresence Technologies VIII International Society for Optics and Photonics*. Feb. 2002, 4570, pp. 78-85.
- [23] Megali, G., Tonet, O., Stefanini, C., et al.: 'A computer-assisted robotic ultrasound-guided biopsy system for video-assisted surgery', In *International Conference on Medical Image Computing and Computer-Assisted Intervention*, Berlin, Heidelberg, Oct. 2001, pp. 343-350.
- [24] Tsekos, N. V., Shudy, J., Yacoub, E., et al.: 'Development of a robotic device for MRI-guided interventions in the breast', In *Proceedings 2nd Annual IEEE International Symposium on Bioinformatics and Bioengineering*, Bethesda, MD, USA, Nov. 2001, pp. 201-208.

- [25] Hong, J., Dohi, T., Hashizume, M., et al.: 'An ultrasound-driven needle-insertion robot for percutaneous cholecystostomy', *Physics in Medicine & Biology*, 2004, 49, (3), pp. 441-455.
- [26] Hudnall, M., Usawachintachit, M., Metzler, I., et al.: 'Ultrasound guidance reduces percutaneous nephrolithotomy cost compared to fluoroscopy', *Urology*, 2017, 103, pp.52-58.
- [27] Natarajan, S., Jones, T.A., Priester, A.M., et al.: 'Focal laser ablation of prostate cancer: feasibility of magnetic resonance imaging-ultrasound fusion for guidance', *The Journal of urology*, 2017, 198, (4), pp.839-847.
- [28] Charnley, R.M., Morris, D.L., Dennison, A.R., et al.: 'Detection of colorectal liver metastases using intraoperative ultrasonography', *British journal of surgery*, 1991, 78, (1), pp.45-48.
- [29] Clarke, M.P., Kane, R.A., Steele Jr, G., et al.: 'Prospective comparison of preoperative imaging and intraoperative ultrasonography in the detection of liver tumours', *British journal of surgery*, 1989, 76, (12), pp. 1323-1329.
- [30] Epstein, F.J., Farmer, J.P. Schneider, S.J. : 'Intraoperative ultrasonography: an important surgical adjunct for intramedullary tumours', *Journal of neurosurgery*, 1991, 74, (5), pp.729-733.
- [31] "Development of a 'smart surgical instrument'", <https://repository.tudelft.nl/islandora/object/uuid:eed4f816-6b77-462d-8d17-9c8cd8a61a4a?collection=education>
- [32] Chang W., Stetten G., Lobes L., et al.: 'BGuidance of retrobulbar injection with real time tomographic reflection', *J. Ultrasound Medicine*, 2002, 21, pp. 1131-1135.
- [33] Stetten G., Cois A., Chang W., et al.: 'C-Mode Real-time Tomographic Reflection for a Matrix Array Ultrasound Sonic Flashlight' *Academic radiology*, 2005 ,12, (5), pp.535-43.
- [34] Meng, B., Zhao, Y. Y., Chen, L., et al.: 'Robot-assisted mirror ultrasound scanning for deep venous thrombosis detection using RGB-D sensor', *Multimedia Tools and Applications*, 2016, 75, (22), pp.14247-14261.
- [35] 'Robotic mirror ultrasound imaging', <https://musiic.lcsr.jhu.edu/research/co-robotic-ultrasound-imaging/robotic-mirror-ultrasound-imaging/>
- [36] Taylor, R.H. Joskowicz, L.,: 'Computer-integrated surgery and medical robotics', *Standard Handbook of Biomedical Engineering and Design*, The McGraw-Hill Companies, Inc. 2003, pp.325-353.
- [37] Pierrot, F., Dombre, E., Dégoulange, E., et al.: 'Hippocrate: A safe robot arm for medical applications with force feedback', *Medical Image Analysis*, 1999, 3, (3), pp.285-300.
- [38] Degoulange, E., Urbain, L., Caron, P., et al.: 'HIPPOCRATE: an intrinsically safe robot for medical applications', In *IEEE/RSJ International Conference on Intelligent Robots and Systems Innovations in Theory, Practice and Applications*, Victoria, BC, Canada, Oct. 1998, 2, pp. 959-964.
- [39] Wang, S., Housden, J., Noh, Y., et al.: 'Robotic-assisted Ultrasound for Fetal Imaging: Evolution from Single-arm to Dual-arm System', In *Annual Conference Towards Autonomous Robotic Systems*, London, UK, July 2019, pp. 27-38.
- [40] Wang, S., Housden, R.J., Noh, Y., et al.: 'Analysis of a Customized Clutch Joint Designed for the Safety Management of an Ultrasound Robot', *Applied Sciences*, 2019, 9, (9), p.1900.
- [41] De Cunha, D., Gravez, P., Leroy, C., et al.: 'The MIDSTEP system for ultrasound guided remote telesurgery', In *Proceedings of the 20th Annual International Conference of the IEEE Engineering in Medicine and Biology Society. Vol. 20 Biomedical Engineering Towards the Year 2000 and Beyond*, Nov. 1998, 3, pp. 1266-1269.
- [42] Arbeille, P., Capri, A., Ayoub, J., et al.: 'Use of a robotic arm to perform remote abdominal tele-ultrasonography', *American journal of Roentgenology*, 2007. 188, (4), pp.W317-W322.
- [43] P. Vieyres Poisson G, Courrèges F, et al.: 'A tele-operated robotic system for mobile tele-echography: The OTELO project', *M-health, Springer*, 2006, Chapter 23, pp. 461-474,
- [44] Garawi, S.A., Courreges, F., Istepanian, R.S.H., et al.: 'Performance analysis of a compact robotic tele-echography E-health system over terrestrial and mobile communication links', In *Fifth IEE International Conference on 3G Mobile Communication Technologies (3G 2004) The Premier Technical Conference for 3G and Beyond London, UK, 2004*, pp. 118 – 122.
- [45] Mitsuishi, M., Warisawa, S.I., Tsuda, T., et al.: 'Remote ultrasound diagnostic system,' In *Proceedings IEEE International Conference on Robotics and Automation*, May 2001, 2, pp. 1567-1574.
- [46] Turnbull, D.H. Foster, F.S., : 'In vivo ultrasound biomicroscopy in developmental biology', *Trends in Biotechnology*, 2002, 20, (8), pp.S29-S33.
- [47] Gumprecht, J.D., Bauer, T., Stolzenburg, J.U. et al.: 'A robotics-based flat-panel ultrasound device for continuous intraoperative transcutaneous imaging', In *2011 Annual International Conference of the IEEE Engineering in Medicine and Biology Society*, Boston, MA, USA, 2011. pp. 2152-2155.
- [48] Mauro, V.G., Zusmer, N.R., Gilson, A.J., et al.: 'Ultrasound of the whole breast utilizing a dedicated automated breast scanner', *Radiology*, 1980, 137, (2), pp.457-463.
- [49] Vieyres, P., Poisson, G., Courrèges, F., et al.: 'The TERESA project: from space research to ground tele - echography', *Industrial robot*, 2003, 30, 1, PP.77-82.
- [50] 'teresa', <https://whirl.cs.ox.ac.uk/teresa/>
- [51] Arbeille, P., Ruiz, J., Herve, P., et al.: 'Fetal tele - echography using a robotic arm and a satellite link', *Ultrasound in Obstetrics and Gynecology: The Official Journal of the International Society of Ultrasound in Obstetrics and Gynecology*, 2005, 26, (3), pp.221-226.

- [52] Masuda, K., Takachi, Y., Urayama, Y. et al.: 'Development of support system to handle ultrasound probe by coordinated motion with medical robot', In Annual International Conference of the IEEE Engineering in Medicine and Biology Society, Boston, MA, USA, Aug. 2011, pp. 4519-4522.
- [53] Kojcev, R., Fuerst, B., Zetting, O., et al.: 'Dual-robot ultrasound-guided needle placement: closing the planning-imaging-action loop', International journal of computer assisted radiology and surgery, 2016, 11, (6), pp.1173-1181.
- [54] Najafi, F., Sepehri, N.: 'A robotic wrist for remote ultrasound imaging', Mechanism and machine theory, 2011, 46, (8), pp.1153-1170.
- [55] Nouaille, L., Smith-Guérin, N., Poisson, G., et al.: 'Optimization of a 4 dof tele-echography robot', In 2010 IEEE/RSJ International Conference on Intelligent Robots and Systems, Taipei, Taiwan, China. Oct.2010, pp. 3501-3506.
- [56] Masuda, K., Kimura, E., Tateishi, N.: 'Three Dimensional Motion Mechanism of Ultrasound Probe and its Application for Tele-echography System', In Proceedings 2001 IEEE/RSJ International Conference on Intelligent Robots and Systems. Maui, HI, USA, 2001, pp. 1112- 1116.
- [57] F. Najafi, N. Sepehri, 'A novel hand controller for remote ultrasound imaging', Mechatronics, 2008. 18, (10), pp.578-590.
- [58] Blankenberg, F.G., Loh, N.N., Bracci, P.D., 'Sonography, CT, and MR imaging: a prospective comparison of neonates with suspected intracranial ischemia and hemorrhage', American journal of neuroradiology, 2000, 21, (1), pp.213-218.
- [59] Abolmaesumi, P., Salcudean, S.E., Zhu, W.H., et al.: 'A user interface for robot-assisted diagnostic ultrasound', in IEEE Int. Conf. Robotics and Automation (ICRA), Seoul, South Korea, South, 2001, pp. 1549-1554.
- [60] Wein, W., Brunke, S., Khamene, A., et al.: 'Automatic CT-ultrasound registration for diagnostic imaging and image-guided intervention', Medical image analysis, 2008, 12, (5), pp.577-585.
- [61] Meng, X., Rosenkrantz, A.B., Mendhiratta, N., et al.: 'Relationship between prebiopsy multiparametric magnetic resonance imaging (MRI), biopsy indication, and MRI-ultrasound fusion-targeted prostate biopsy outcomes,' European urology, 2016, 69, (3), pp.512-517.
- [62] Narayanan, R., Kurhanewicz, J., Shinohara, K., et al.: 'MRI-ultrasound registration for targeted prostate biopsy', In 2009 IEEE International Symposium on Biomedical Imaging: From Nano to Macro, Boston, MA, USA, June 2009, pp. 991-994.
- [63] Kaplan, I., Oldenburg, N.E., Meskell, P., et al.: 'Real time MRI-ultrasound image guided stereotactic prostate biopsy', Magnetic resonance imaging, 2002, 20, (3), pp.295-299.
- [64] Marks, L., Young, S. Natarajan, S., 'MRI-ultrasound fusion for guidance of targeted prostate biopsy', Current opinion in urology, 2013, 23, (1), pp.43-50.
- [65] Sauer, F., Khamene, A., Bascle, B., et al.: 'Augmented reality visualization of ultrasound images: system description, calibration, and features', In Proceedings IEEE and ACM International Symposium on Augmented Reality, New York, NY, USA ,Oct. 2001, pp. 30-39.
- [66] Sen, H.T., Bell, M.A.L., Iordachita, I., et al.: 'A cooperatively controlled robot for ultrasound monitoring of radiation therapy', In 2013 IEEE/RSJ International Conference on Intelligent Robots and Systems, Tokyo, Japan, Nov. 2013, pp. 3071-3076.
- [67] Mathur, B., Topiwala, A., Saeidi, et al.: 'Evaluation of Control Strategies for a Tele-manipulated Robotic System for Remote Trauma Assessment', In 2019 Proceedings of the Conference on Control and its Applications, USA, 2019, pp. 7-14.
- [68] Şen, H.T., Cheng, A., Ding, K., et al.: 'Cooperative control with ultrasound guidance for radiation therapy', Frontiers in Robotics and AI, 2016. 3, pp.49.
- [69] Huang, Q., Lan, J. Li, X., : 'Robotic arm based automatic ultrasound scanning for three-dimensional imaging', IEEE Trans. on Industrial Informatics, 2018, 15, (2), pp.1173-1182.
- [70] Huang, Q., Wu, B., Lan, J. and Li, X.: 'Fully automatic three-dimensional ultrasound imaging based on conventional B-scan', IEEE transactions on biomedical circuits and systems, 2018, 12, (2), pp.426-436.
- [71] Ito, K., Yodokawa, K., Aoki, T., Ohmiya, J. Kondo, S., 'A Probe-Camera System for 3D Ultrasound Image Reconstruction', In Imaging for Patient-Customized Simulations and Systems for Point-of-Care Ultrasound Québec City, QC, Canada, 2017. pp. 129-137.
- [72] Hashtrudi-Zaad, K. Salcudean, S.E., 'Bilateral parallel force/position teleoperation control', Journal of Robotic Systems, 2002, 19, (4), pp.155-167.
- [73] Zandsteege, C. J., Bruijnen, D. J. H., Van de Molengraft, M. J. G.: ' Haptic tele-operation system control design for the ultrasound task: A loop-shaping approach ', Mechatronics, 2010, 20, (7), pp.767-777.
- [74] Wang, Y., Koen, M. Ma, D., 'Low-noise CMOS TGC amplifier with adaptive gain control for ultrasound imaging receivers', IEEE Transactions on Circuits and Systems II: Express Briefs, 2010, 58(1), pp.26-30.
- [75] Buzurovic, I., Podder, T.K. Yu, Y., 'Force prediction and tracking for image-guided robotic system using neural network approach', In 2008 IEEE Biomedical Circuits and Systems Conference, Baltimore, MD, USA, Nov. 2008, pp.41-44.
- [76] Karar, M.E., 'A simulation study of adaptive force controller for medical robotic liver ultrasound guidance', Arabian Journal for Science and Engineering, 2018, 43, (8), pp.4229-4238.
- [77] Sartori, E., Tadiello, C., Secchi, C., et al.: 'Tele-echography using a two-layer teleoperation algorithm

- with energy scaling', In 2019 International Conference on Robotics and Automation, Montreal, QC, Canada, May, 2019, pp. 1569-1575.
- [78] A. Gourdon, P. Poignet, G. Poisson, et al.: 'Master-slave robotic system for ultrasound scanning', in Proc. Eur. Medical and Biological Engineering Conf., vol. II, Mar. 1999, pp. 1116-1117.
- [79] Koizumi, N., Warisawa, S.I., Mitsuishi, M. et al.: 'Impedance controller for a remote ultrasound diagnostic system', In Proceedings 2002 IEEE International Conference on Robotics and Automation, Washington, DC, USA, 2002, May, 1, pp. 651-656.
- [80] Krupa A, Folio D, Novales C, et al. : 'Robotized tele-echography: an assisting visibility tool to support expert diagnostic', IEEE Systems Journal, 2014, 10, (3), pp.974-83
- [81] Huang, Q., Zhang, F. Li, X., : 'Machine learning in ultrasound computer-aided diagnostic systems: a survey', BioMed research international, 2018.
- [82] Takahashi, R. and Kajikawa, Y., : 'Computer-aided diagnosis: A survey with bibliometric analysis', International journal of medical informatics, 2017, 101, pp.58-67.
- [83] Hinton, G.E. Salakhutdinov, R.R., : 'Reducing the dimensionality of data with neural networks', science, 2006, 313, (5786), pp.504-507.
- [84] Nair, A.A., Gubbi, M.R., Tran, T.D., et al. : ' A fully convolutional neural network for beamforming ultrasound images', In 2018 IEEE International Ultrasonics Symposium (IUS) Kobe, Japan, Oct. 2018, pp. 1-4.
- [85] Yu, Z., Tan, E.L., Ni, D., Qin, J., et al. : 'A deep convolutional neural network-based framework for automatic fetal facial standard plane recognition', IEEE journal of biomedical and health informatics, 2017, 22, (3), pp.874-885.
- [86] Chen, H., Wu, L., Dou, Q., Qin, J., et al. : 'Ultrasound standard plane detection using a composite neural network framework', IEEE transactions on cybernetics, 2017. 47, (6), pp.1576-1586.
- [87] Cheng, P.M. Malhi, H.S., : 'Transfer learning with convolutional neural networks for classification of abdominal ultrasound images', Journal of digital imaging, 2017, 30, (2), pp.234-243.
- [88] Perdios, D., Vonlanthen, M., Besson, A., et al. : 'Deep convolutional neural network for ultrasound image enhancement', In 2018 IEEE International Ultrasonics Symposium (IUS) Kobe, Japan, 2018, October, pp. 1-4.
- [89] Mylonas, G.P., Giataganas, P., Chaudery, M., et al. : ' Autonomous eFAST ultrasound scanning by a robotic manipulator using learning from demonstrations', In 2013 IEEE/RSJ International Conference on Intelligent Robots and Systems, Tokyo, Japan, Nov. 2013, pp. 3251-3256.
- [90] Klatzky, R. L., Bing W., et al. : 'Spatial representations from perception and cognitive mediation: The case of ultrasound', Current directions in psychological science, 2008, 17, 6, pp.359-364.
- [91] Kellman, P. J., Christine M. M. : 'Perceptual learning, cognition, and expertise', Psychology of learning and motivation, Academic Press 2013, 58, pp.117-165.
- [92] Yap, M.H., Edirisinghe, E. Bez, H., : 'Processed images in human perception: A case study in ultrasound breast imaging', European journal of radiology, 2010, 73, (3), pp.682-687.
- [93] Khamene, A., Vogt, S., Azar, F., et al.: ' Local 3D reconstruction and augmented reality visualization of free-hand ultrasound for needle biopsy procedures', In International Conference on Medical Image Computing and Computer-Assisted Intervention, Montr al, Canada, Nov. 2003, pp. 344-355.
- [94] Linte, C.A., Moore, J., Wiles, A.D., et al.: ' Virtual reality-enhanced ultrasound guidance: A novel technique for intracardiac interventions', Computer Aided Surgery, 2008,13, (2), pp.82-94.
- [95] Modha, D.S., Ananthanarayanan, R., Esser, S.K., et al. : 'Cognitive computing', Communications of the ACM, 2011, 54, (8), pp.62-71.
- [96] Newell, A., 1994. Unified theories of cognition. Harvard University Press.
- [97] Zhu, Y., Magee, D., Ratnalingam, R. et al. : ' A training system for ultrasound-guided needle insertion procedures', In International Conference on Medical Image Computing and Computer-Assisted Intervention, Brisbane, Australia, Oct. 2007, pp. 566-574.
- [98] Yang, C., Zeng, C., Liang, P., et al. : 'Interface design of a physical human-robot interaction system for human impedance adaptive skill transfer', IEEE Transactions on Automation Science and Engineering, 2017, 15, (1), pp.329-340.
- [99] Yang, C., Zeng, C., Fang, C., et al. : ' A dmps-based framework for robot learning and generalization of humanlike variable impedance skills', IEEE/ASME Transactions on Mechatronics, 2018, 23, (3), pp.1193-1203.
- [100] Yang, C., Zeng, C., Cong, Y., et al. : ' A learning framework of adaptive manipulative skills from human to robot', IEEE Transactions on Industrial Informatics, 2018, 15, (2), pp.1153-1161.
- [101] Lin H., Shafran I., Yuh D., et al. : 'Towards automatic skill evaluation: detection and segmentation of robot-assisted surgical motions', Comput Aided Surg, 2006, 11, (5), pp. 220-230.
- [102] Chen, X., Wang, N., Cheng, H. et al. : 'Neural Learning Enhanced Variable Admittance Control for Human-Robot Collaboration', IEEE Access, 2020, 8, pp.25727-25737.